

# TRACK CHART

EDWARDS, KAN. TO AFTON, OKLA.

M.P. L-102.86 TO L-186.30

**CORRECTED TO 23 FEB. 1982**

## ABBREVIATIONS

### BRIDGES & DRAINAGE STRUCTURES

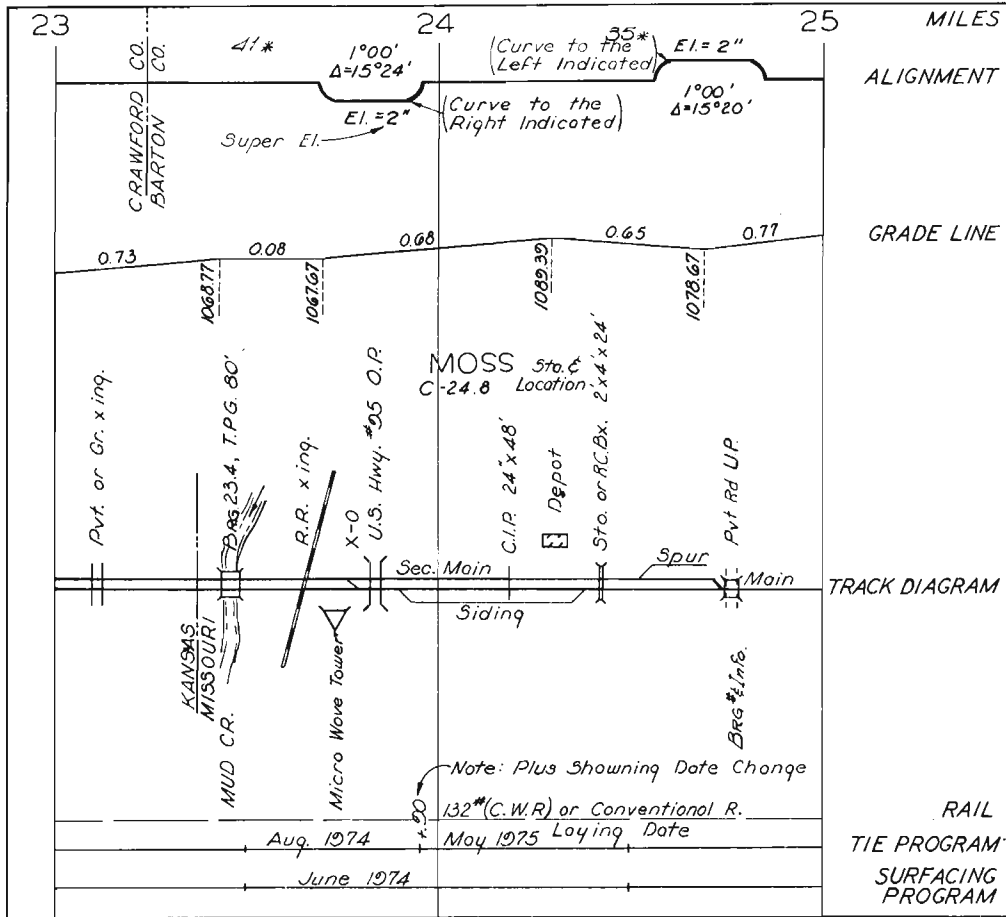
CULV.	CULVERT
AR.	ARCH
BX.	BOX
STO.	STONE
DBL.	DOUBLE
EXT.	EXTENSION
V.C.P.	VITRIFIED CLAY PIPE
C.I.P.	CAST IRON PIPE
C.M.P.	CORRUGATED METAL PIPE
R.C.P.	REINFORCED CONCRETE PIPE
M.P.P.	MULTI-PLATE PIPE
BR.	BRIDGE
O.D.F.T.	OPEN DECK FRAME TRESTLE
B.D.F.T.	BALLASTED DECK FRAME TRESTLE
O.D.P.T.	OPEN DECK PILE TRESTLE
B.D.P.T.	BALLASTED DECK PILE TRESTLE
I.B.S.	I-BEAM SPAN
I.B.C.E.	I-BEAMS, CONCRETE ENCASED
D.P.G.	DECK PLATE GIRDER
T.P.G.	THROUGH PLATE GIRDER
D.R.T.	DECK RIVETED TRUSS
T.R.T.	THROUGH RIVETED TRUSS
D.P.C.T.	DECK PIN CONNECTED TRUSS
T.P.C.T.	THROUGH PIN CONNECTED TRUSS
P.R.T.	PONY RIVETED TRUSS
R.C.S.	REINFORCED CONCRETE SPAN
P.S.C.S.	PRESTRESSED CONCRETE SPAN
L.J.I.P.	LOOSE JOINT IRON PIPE

### MISCELLANEOUS

CR.	CREEK
RIV.	RIVER
CO.	COUNTY
HO.	HOUSE
LT.	LEFT
RT.	RIGHT
R.R.	RAILROAD
R.Y.	RAILWAY
O.P.	OVERPASS
U.P.	UNDERPASS
YD.	YARD
E.	EAST
W.	WEST
N.	NORTH
S.	SOUTH
ST.	STREET
AVE.	AVENUE
HWY.	HIGHWAY
RTE.	ROUTE
RD. X-ING	ROAD CROSSING
PUB.	PUBLIC
PVT.	PRIVATE
STA.	STATION
TRK.	TRACK
OFF.	OFFICE
JCT.	JUNCTION
CONN.	CONNECTION
FRT.	FREIGHT
IND.	INDUSTRY
M/T	MAIN TRACK
FLSH.	FLASHING
CANT.	CANTILEVER

### (MISC. - CONT.)

H.B. DET.	HOT BOX DETECTOR
SIG.	SIGNAL
D.E. DET.	DRAWING EQUIPMENT DETECTOR
SURF.	SURFACING
C.T.C. TERR.	CENTRALIZED TRAFFIC CONTROL TERRITORY
C.W.R.	CONTINUOUS WELDED RAIL
INTER.	INTERLOCKING
GR.	AT GRADE
EL.	ELEVATION OF CURVES
Δ	DELTA OF CURVES
C.M.	CURVE MASTER



### EXPLANATION

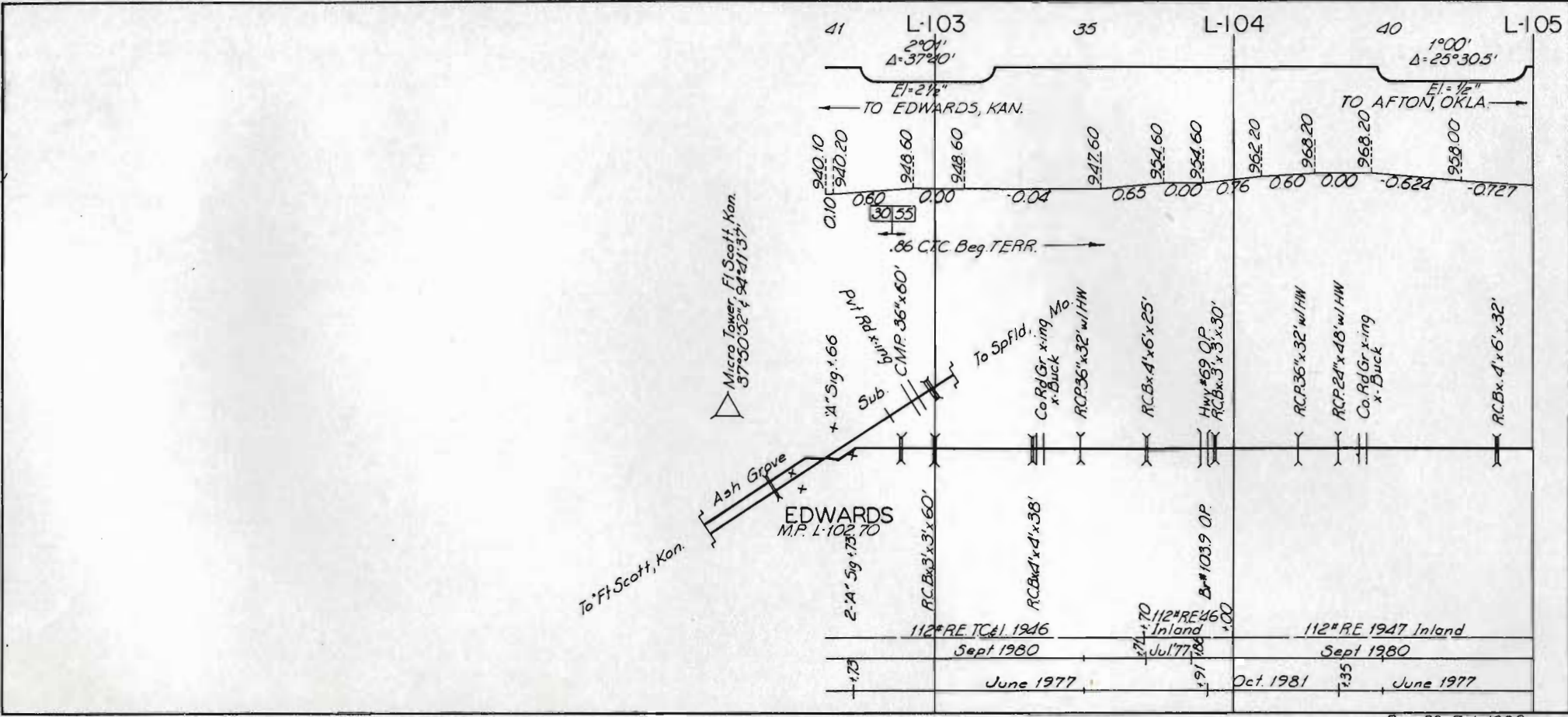
Scales—  $1\frac{1}{2}''=2640'$  — { Horizontal Scale For Profile  
 Alignment and Tracks  
 $1''=200'$  — Vertical Scale For Profile

— Ascending Ruling Grades For District

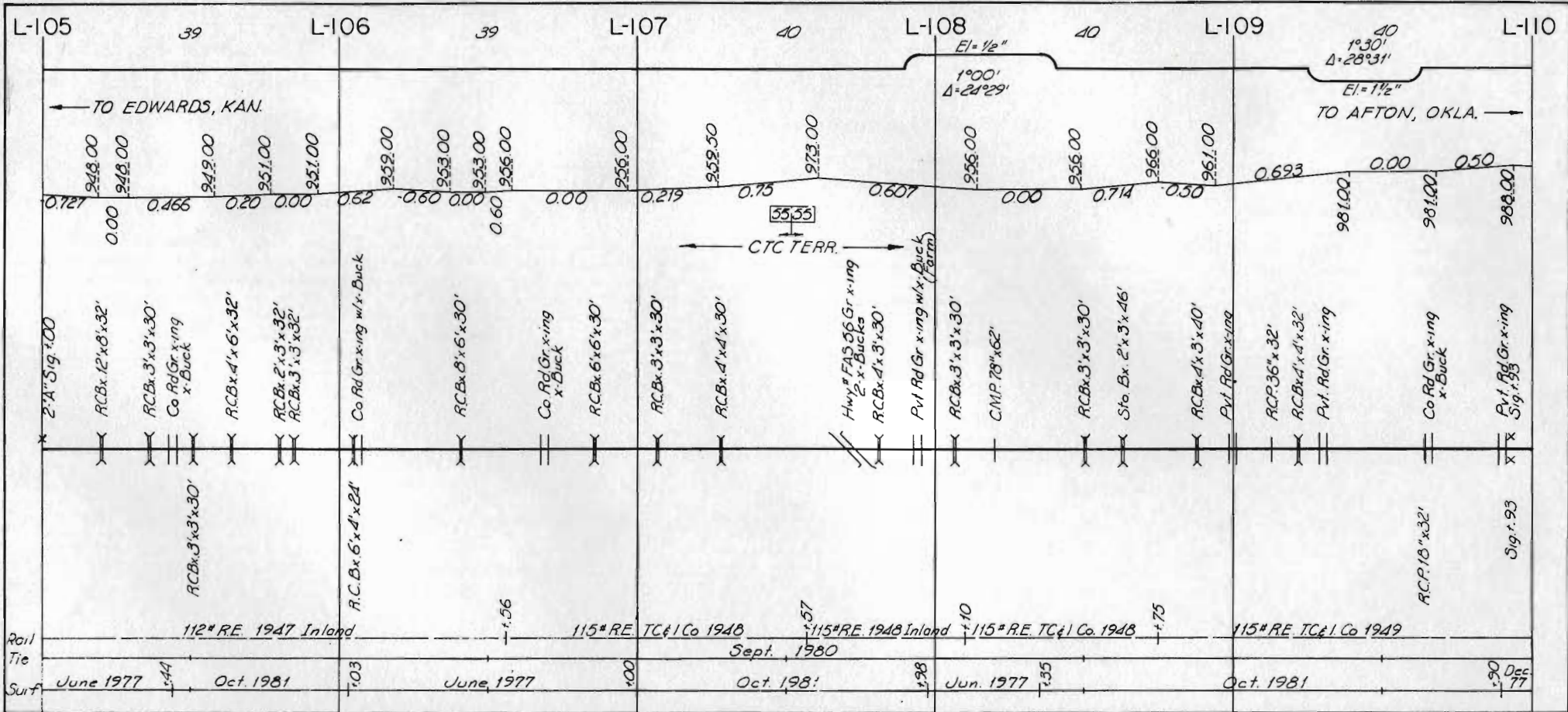
Figures on Grade Lines are % Gradients.  
 Figures Below Grade Lines are Profile Base of Rail(or Above) Elevations in Feet.

X= All Types of Signals.  
 5045 Permanent Slow Speed Signs With

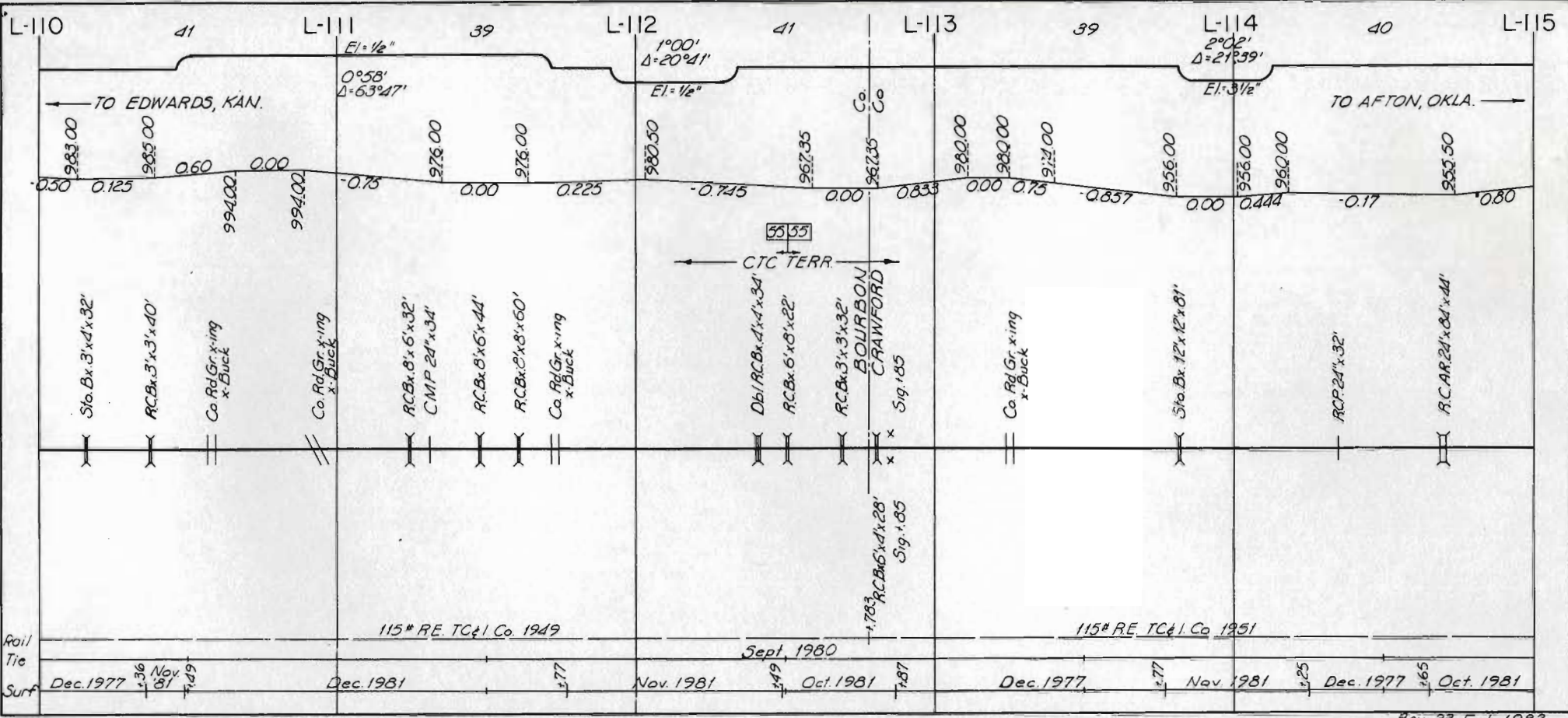
- Appropriate Speeds Shown.
- ▲ Infrared Hot Box Detector
- Dragging Equipment Detector (arrow or arrows denote direction protected.)
- \* Number of Poles Per Mile.

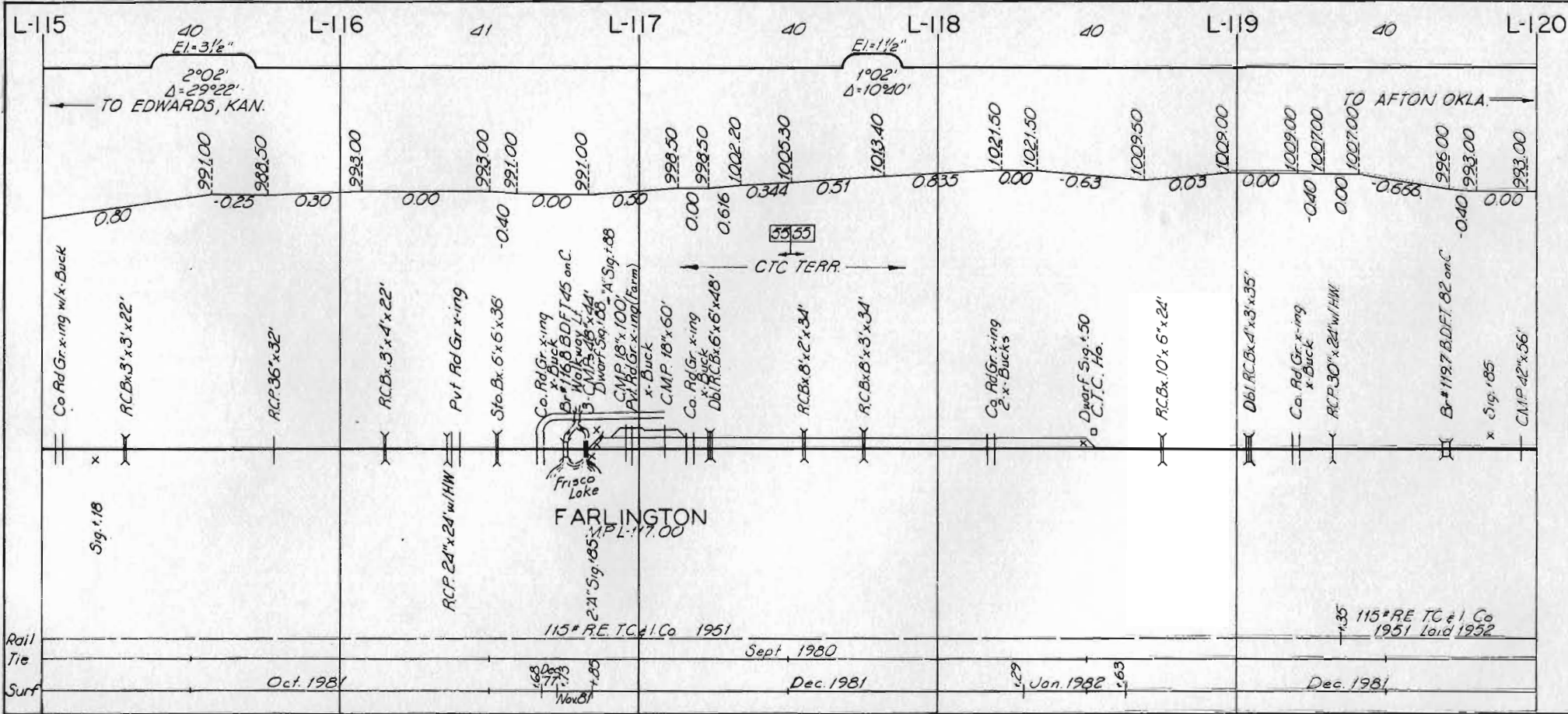




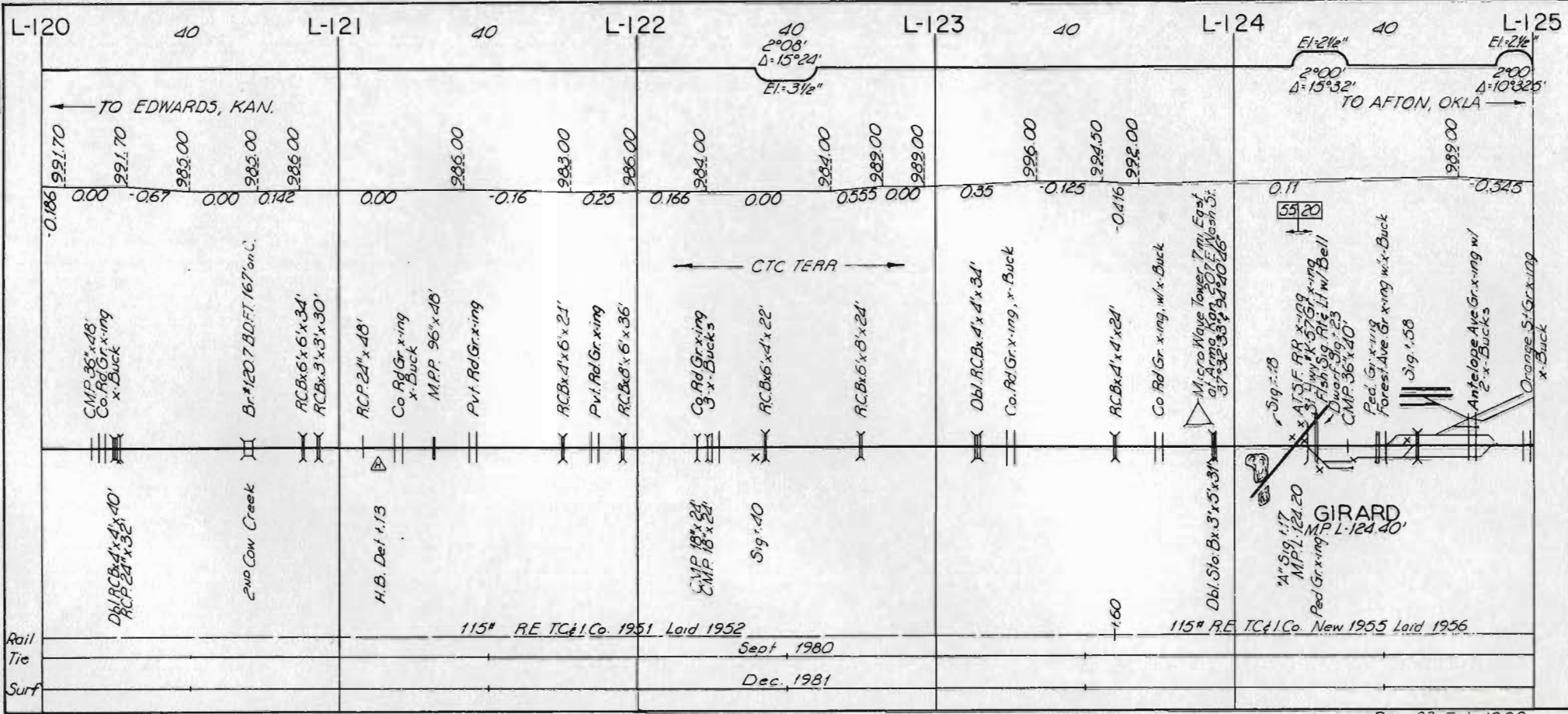


Rail Tie	112* RE 1947 Inland		115* RE TC&I Co 1948		115* RE 1948 Inland		115* RE TC&I Co 1948		115* RE TC&I Co 1949	
Surf	June 1977	Oct. 1981	June 1977	Oct. 1981	June 1977	June 1977	June 1977	June 1977	Oct. 1981	Dec. 1977









Rail Tie  
Surf

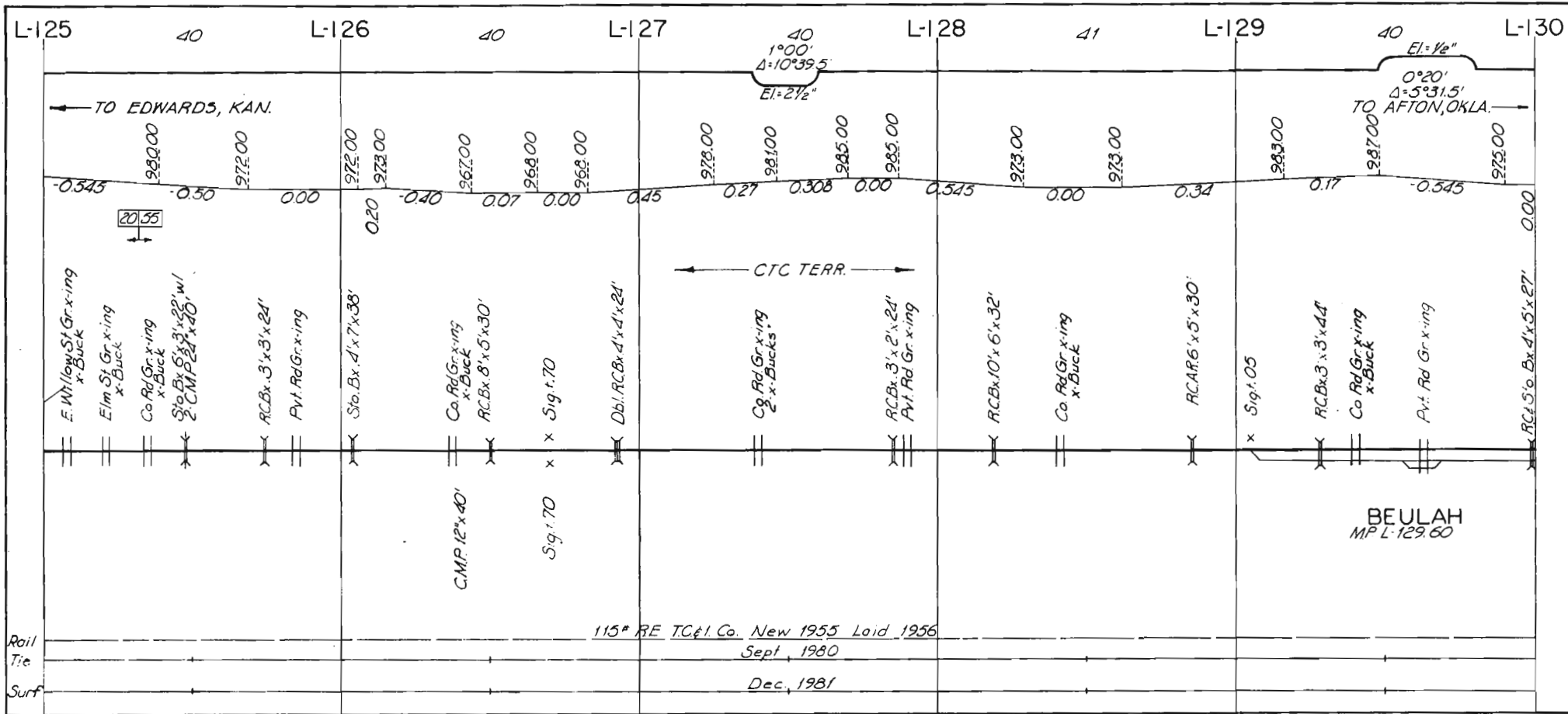
115# RE TC&I Co. 1951 Laid 1952

Sept, 1980

Dec, 1981

115# RE TC&I Co. New 1955 Laid 1956

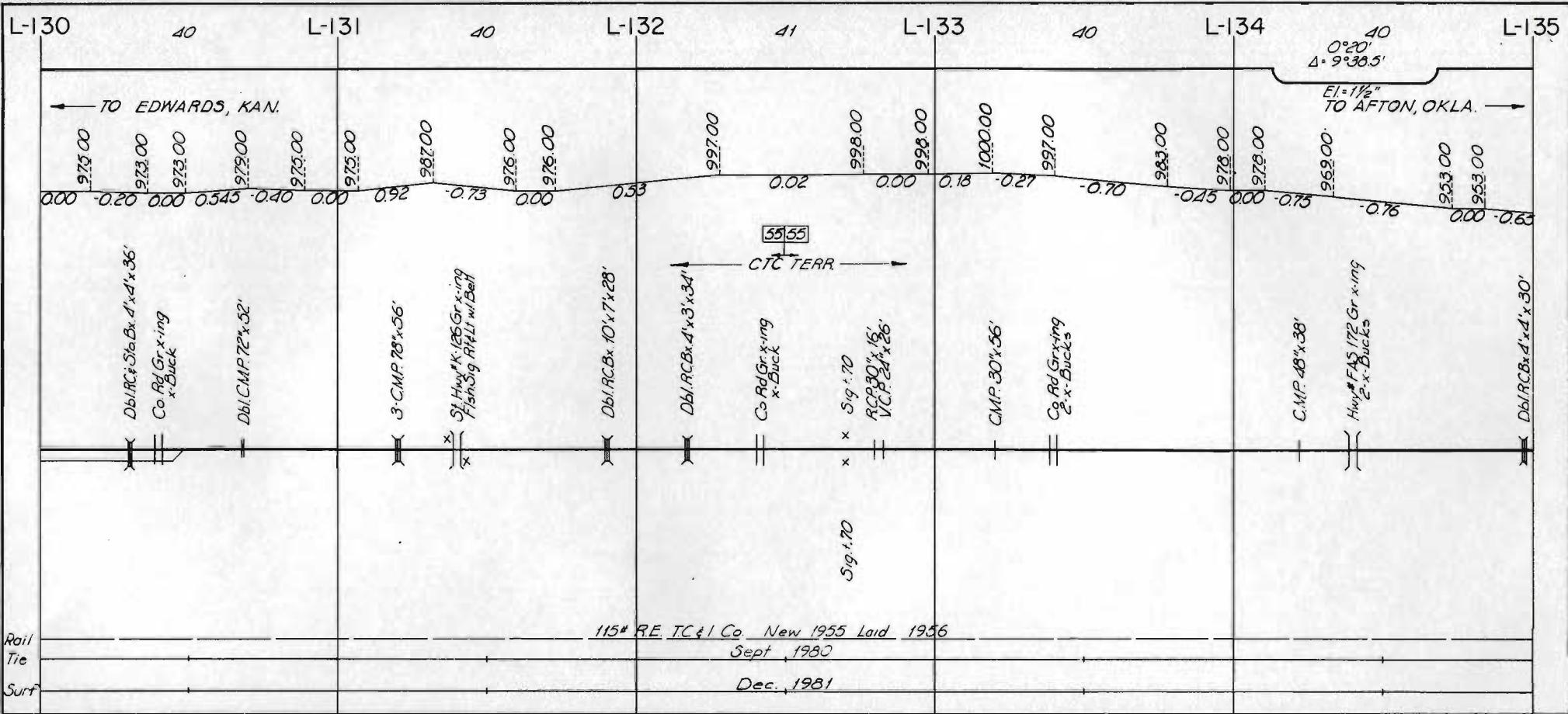




Rail Tie  
Surf

115° RE TC&I Co. New 1955 Loid 1956  
 Sept, 1980  
 Dec, 1981

BEULAH  
 MP L-129.60



L-130      40      L-131      40      L-132      41      L-133      40      L-134      40      L-135

973.00    973.00    973.00    973.00    975.00    975.00    987.00    976.00    976.00    997.00    998.00    998.00    1000.00    997.00    983.00    978.00    978.00    969.00    953.00    953.00

0.00    -0.20    0.00    0.545    -0.40    0.00    0.92    -0.73    0.00    0.53    0.02    0.00    0.18    -0.27    -0.70    -0.45    0.00    -0.75    -0.76    0.00    -0.63

Db/RC: Sto Bx 4'x4'x36'  
Co Rd Gr x-ing x-Ducks  
Db/ C.M.P. 72"x52'

3-C.M.P. 78"x56'  
SI Hwy# K-126 Gr x-ing Fishing RAIL w/Bell

Db/RC Bx 10'x7'x28'

Db/RC Bx 4'x3'x34'

Co Rd Gr x-ing x-Ducks  
Sig. 1.70  
RC 90"x16'  
VCP 24"x26'

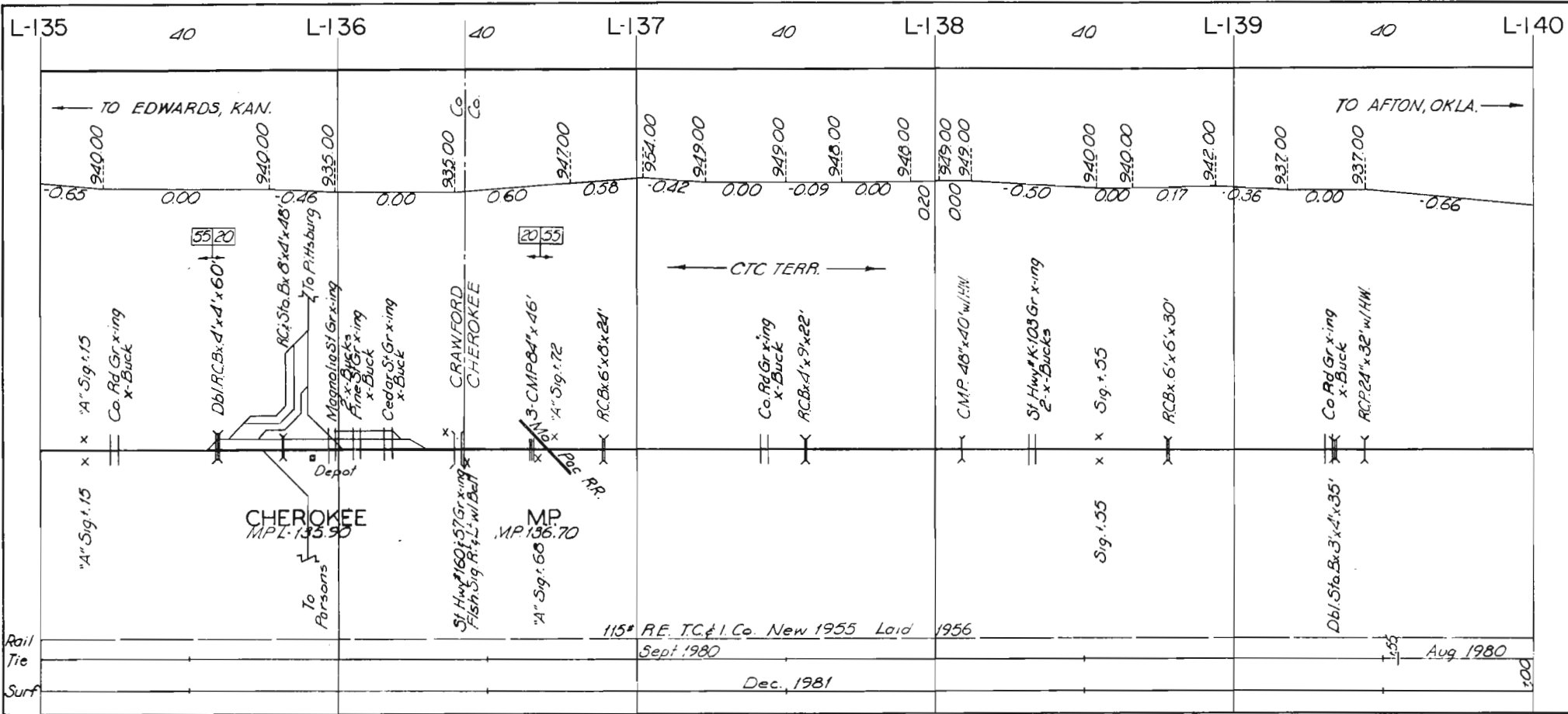
C.M.P. 30"x56'

Co Rd Gr x-ing 2-x-Ducks

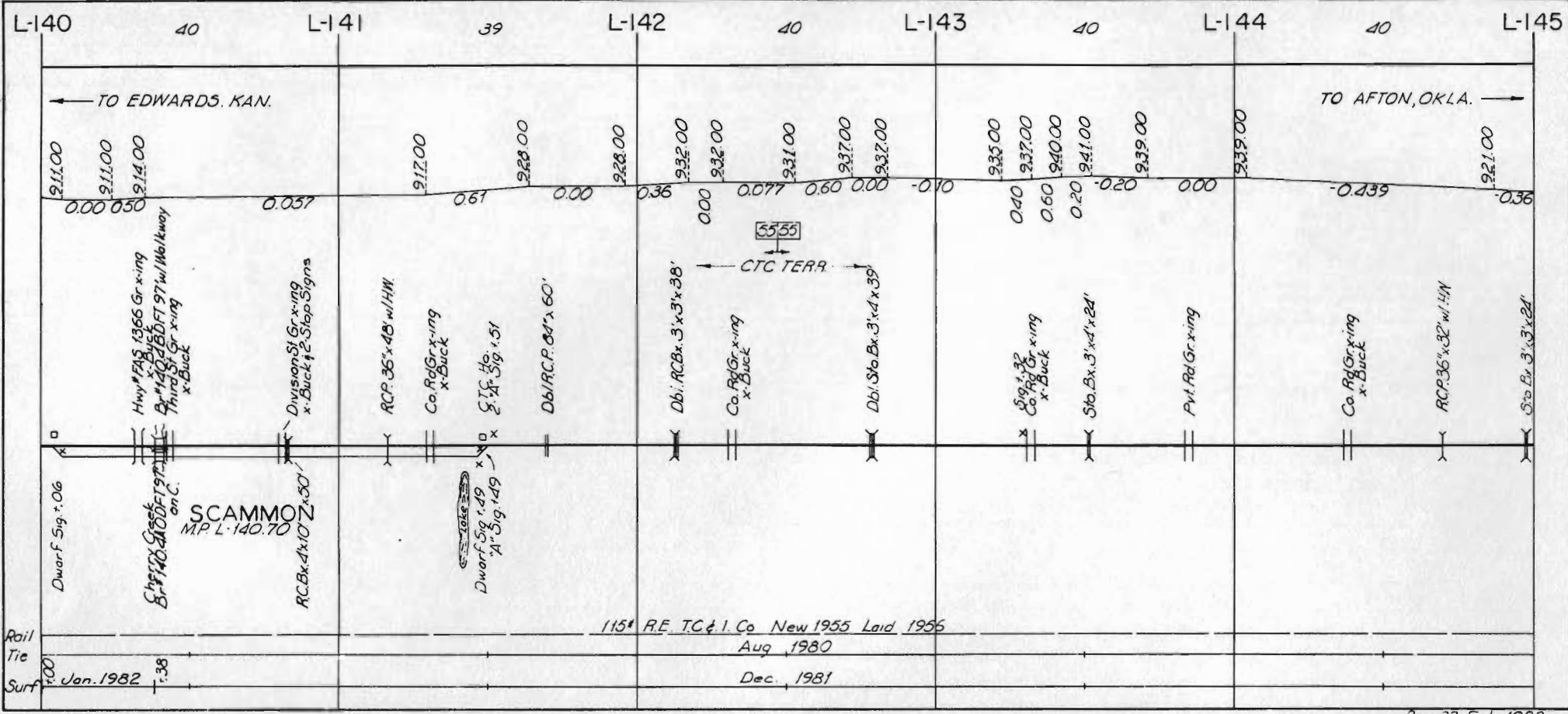
C.M.P. 48"x38'

Hwy# FAS 172 Gr x-ing 2-x-Ducks

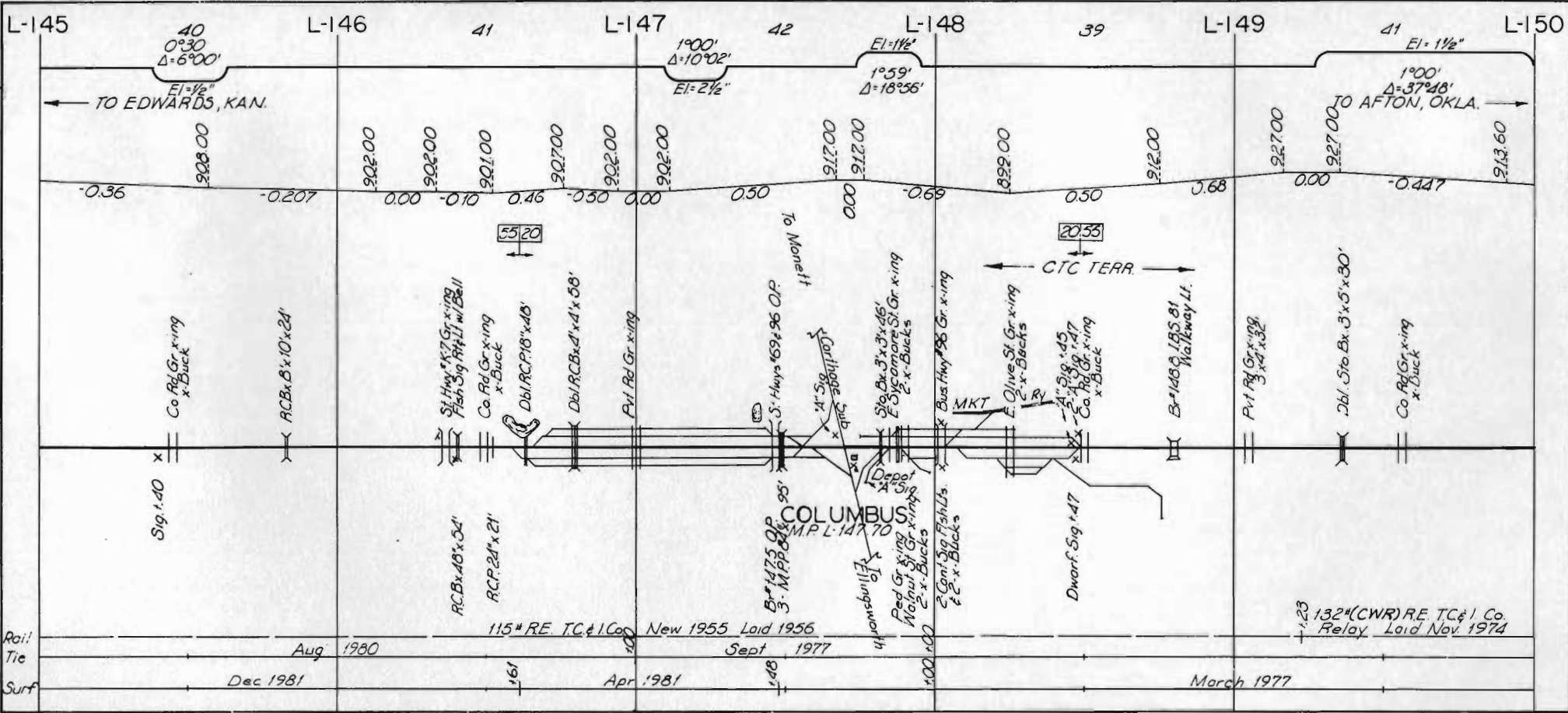
Db/RC Bx 4'x4'x30'

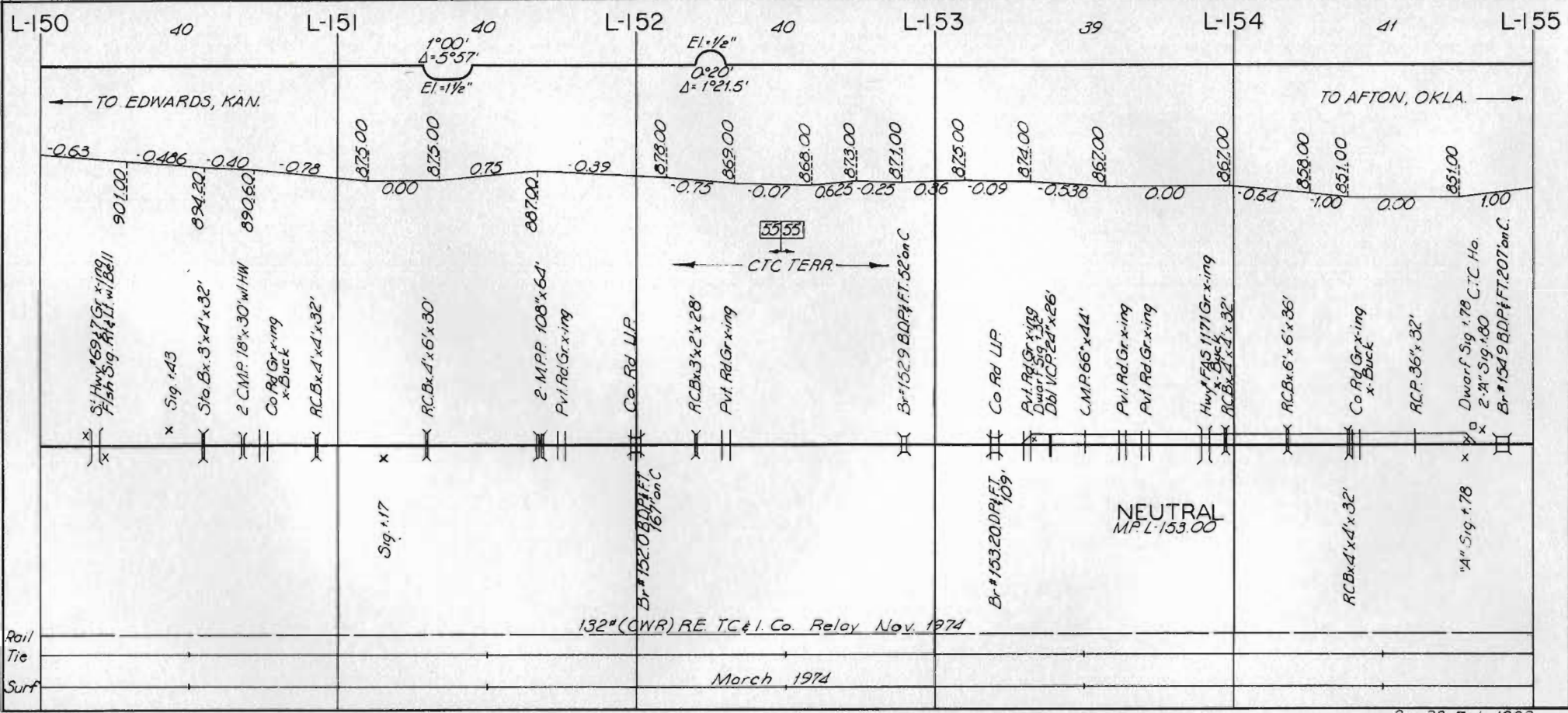


Rail Tie Surf





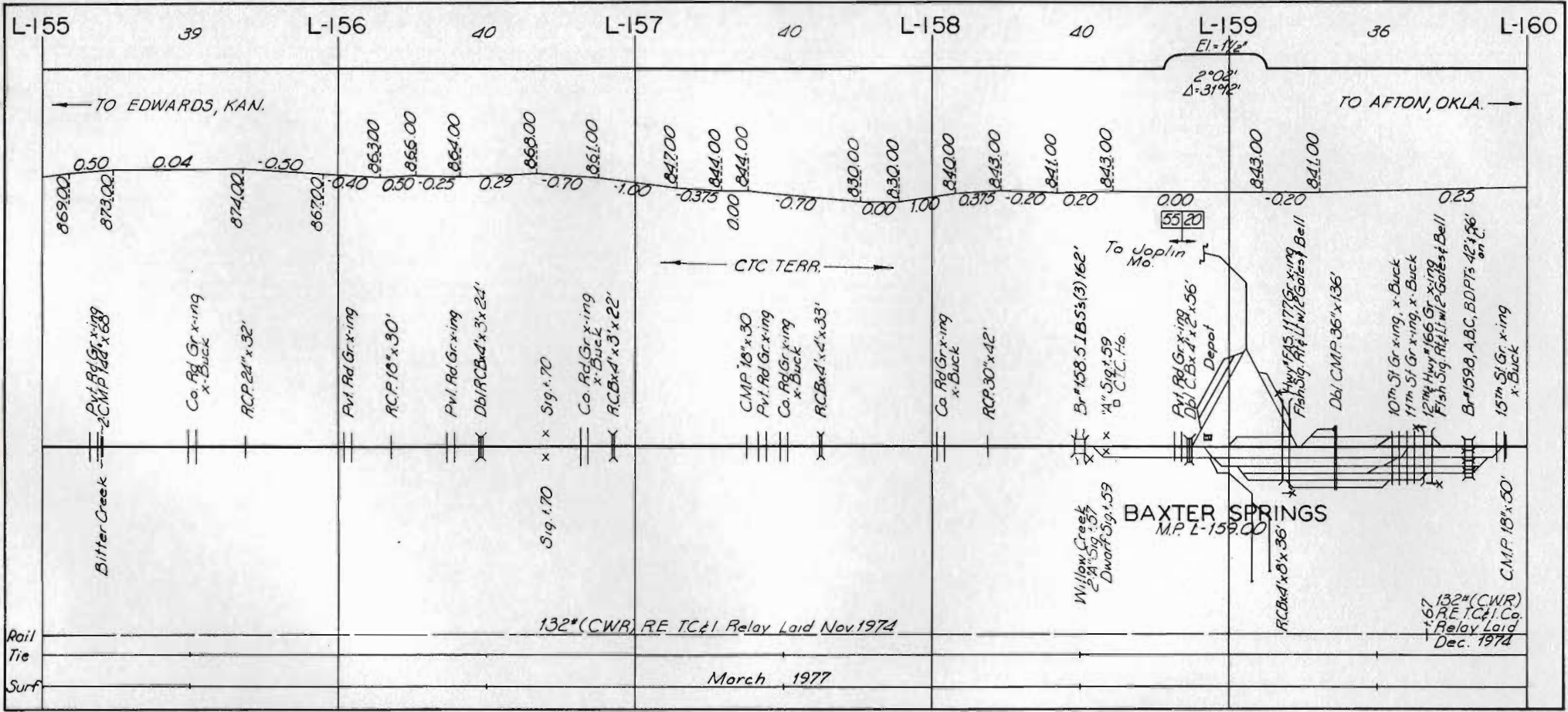




Rail Tie Surf

132" (CWR) RE TC & I. Co. Relay Nov. 1974

March 1974



Rail Tie  
Surf

TO EDWARDS, KAN.

TO AFTON, OKLA.

← CTC TERR. →

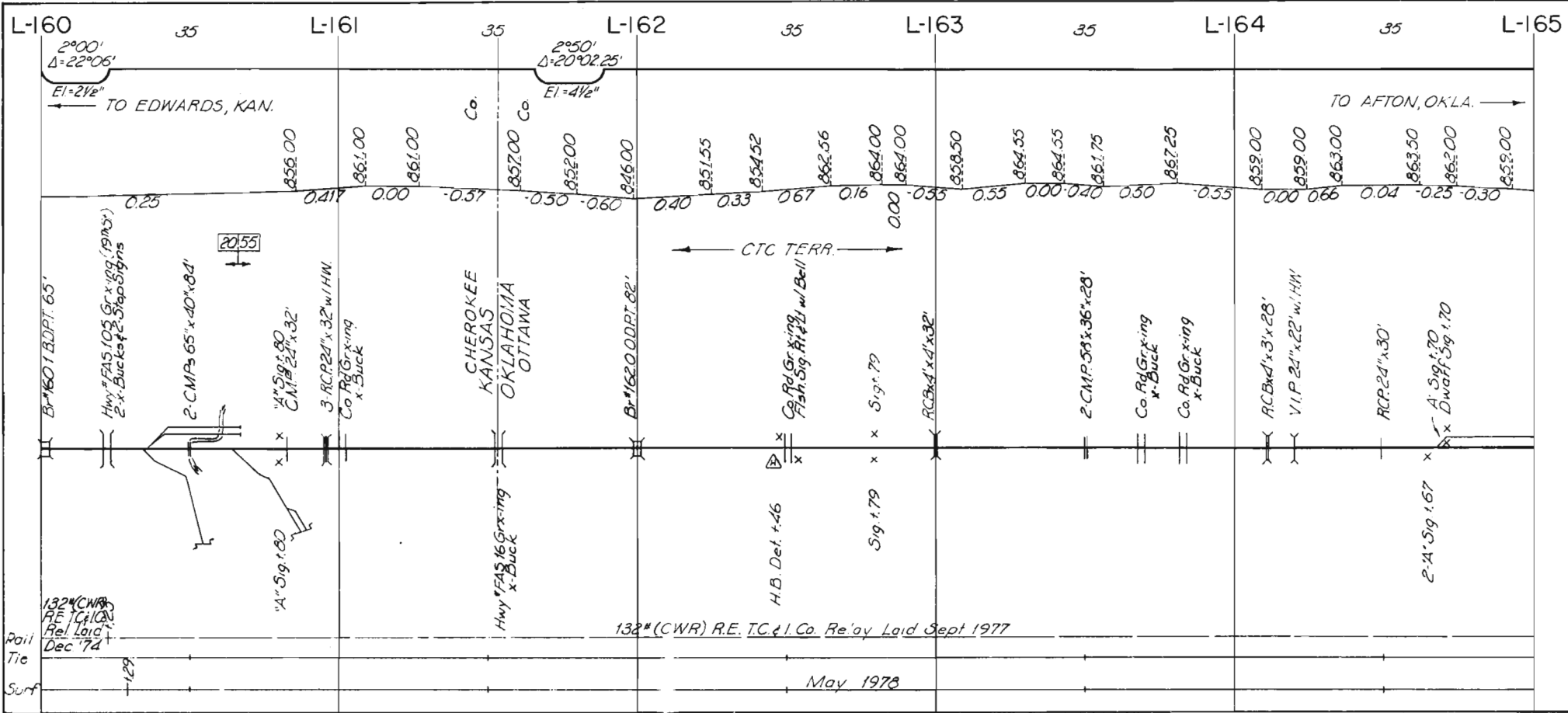
BAXTER SPRINGS  
M.P. L-159.00

132\*(CWR) RE TC#1 Relay Laid Nov. 1974

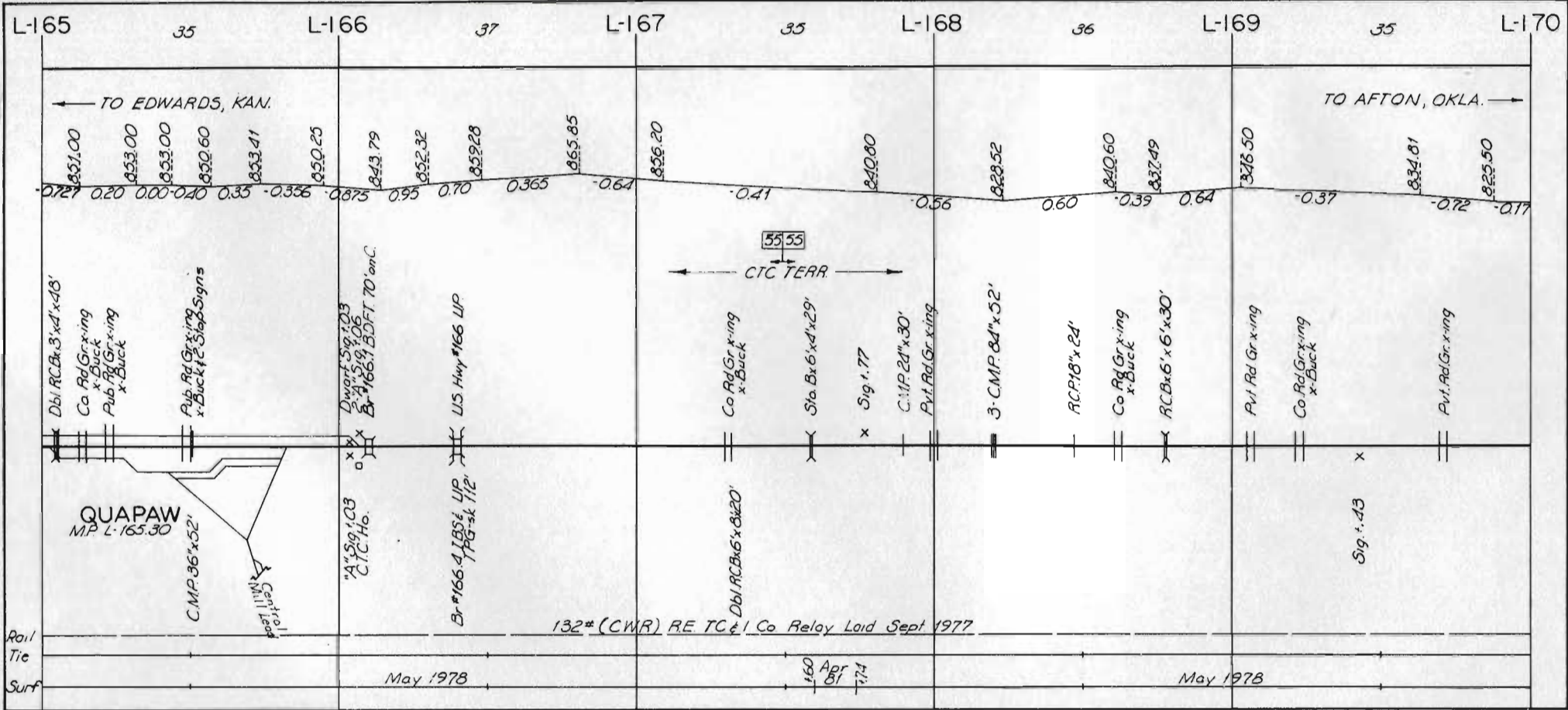
March 1977

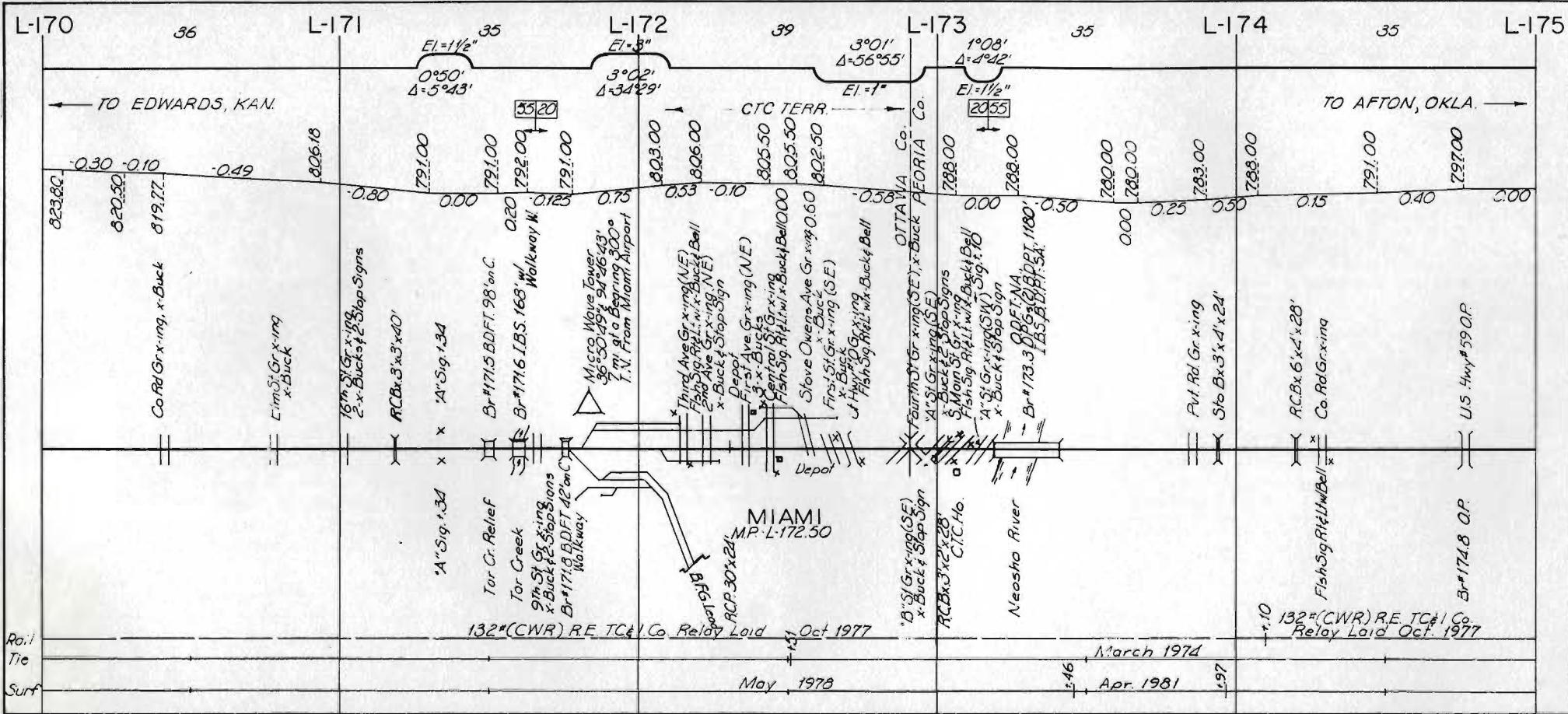
132\*(CWR)  
RE TC#1 Co.  
Relay Laid  
Dec. 1974

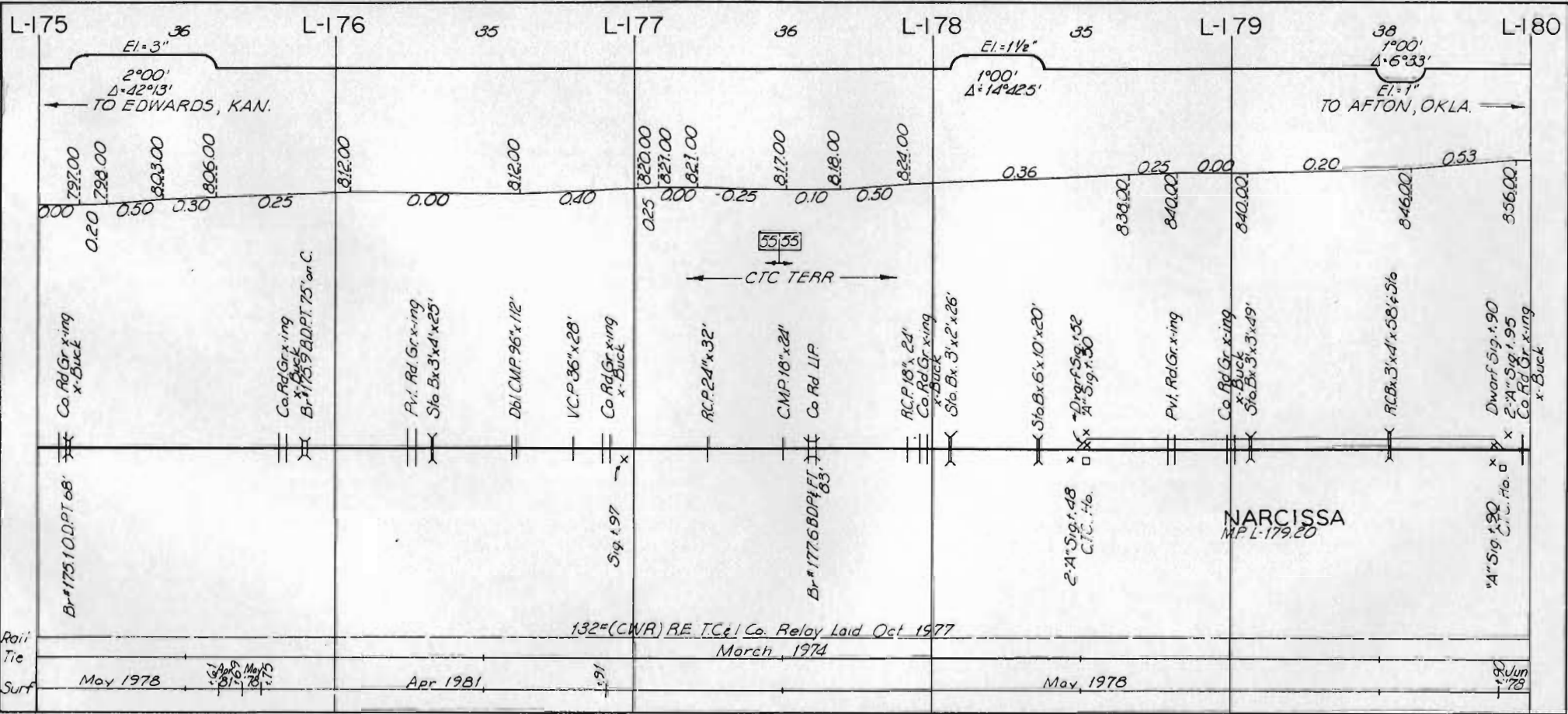












Rail Tie  
Surf

May 1978

1978  
May 1978

Apr 1981

132 (CWR) RE TC&I Co. Relay Laid Oct. 1977

March, 1974

May, 1978

Jun 1978



