

Friends of the Burlington Northern RR 2019 Convention Kansas City, Kansas



Advance Slides by Mouse Click.

Please Do Not Copy or Duplicate. Contains Copyrighted Material.

PowerPoint slides and photos by Patrick Lana unless otherwise noted.

Photos have been compressed to reduce file size so quality may vary.

BNSF Early summer flowers were in bloom as a gaggle of railfans shoot a westbound intermodal on the Emporia Subdivision west of Kansas City, KS.

Dave Poplawski photo.

Friends of the Burlington Northern RR 2019 Convention Kansas City, Kansas



Introduction

The Friends of the Burlington Northern Railroad (FOBNR) historical society was chartered in 1993 to gather, preserve, and share information about the history and the current operations of the Burlington Northern Railroad. In 1996 following the merger between Burlington Northern and Santa Fe, the group voted to follow the Burlington Northern from 1970 to 1995 and the BNSF from 1995 to the present. The Group's quarterly publication, *The BN Expediter*, is the voice of the organization that shares news about the group's activities, BN historical data, and current operations of the railroad. The society also has an annual convention at some location on the BNSF system with programs, tours, displays, a banquet with a keynote speaker, lots of railfanning, and a business meeting.

This slide show highlights the June 5-8, 2019 FOBNR Convention in Overland Park, KS. The convention committee was Benjamin Hucker, Dave Poplawski, Ewan Shortess, John Adams, and Mark Steenwyk.

We hope you N-Joy the slide show!

2019 Convention

Tuesday Evening June 4

Optional Pre-Convention Evening Session



John, Ben, Dave, Mark, Vasyl and Aric pose next to Murray Yard after an enjoyable operating session on Joe Kasper's N-scale BN layout based on St. Joseph and Ft. Scott Subdivisions.
Dave Poplawski photo.

2019 Convention

Tuesday Evening June 4

Optional Pre-Convention Evening Session



Really? Do I push this one?

Dave seems a lot confused by the CTC panel at Joe Kasper's BN Layout.

Mark Steenwyk photo.

65		1030	1100	52 Hours to Pretest
1	Warr	1054	1124	52 Hours to Effect Quinry
71	X	1145	1215	52 Hours to Lincoln

141	X	530.	600.	West Quincy to Kankakee
732	X	700.	730.	Monday - Friday
Guinea	X			West Quincy to Kankakee
Yonkers	X	730.	800.	Tuesday-Thursday-Saturday
				West Quincy to Salem
91	X	815.	845.	East Quincy
				West Quincy to Pulls
99	X			East Quincy
				West Quincy to Burlington
92	X			Tuesday-Thursday-Saturday
				Pulls to West Quincy
10	X			East Quincy
				Pulls to West Quincy
				Monday - Friday
				Quincy to West Quincy
				East Quincy
				Quincy to West Quincy
				Monday-Wednesday-Friday
				Quincy to West Quincy
				Monday-Friday

Mark, Ben, Dave, Vasyl and Aric pose in front of the crew board at Bill Hirts' HO-scale CB&Q layout based around Hannibal, MO.

Dave Poplawski photo.

2019 Convention

Wednesday Morning June 5

Optional Pre-Convention Morning Session



Ben, yardmaster at West Alton, talks with Vasyl about the train he just pulled into the yard on Dave Poplawski photo.

2019 Convention

Wednesday Afternoon June 5
Registration at the Hotel.



Hyatt Place Overland Park Conference Center

Source:

<https://www.hyatt.com/en-US/hotel/kansas/hyatt-place-kansas-city-overland-park-convention-center/mkczo7>

2019 Convention

Wednesday Evening June 5

Evening All Aboard Dinner



Following registration at the Hyatt Place Overland Park Conference Center, we adjourn for dinner at Jack Stack BBQ in Overland Park, KS.

Above photo source:

<https://www.jackstackbbq.com/overland-park/a/overland-park/>

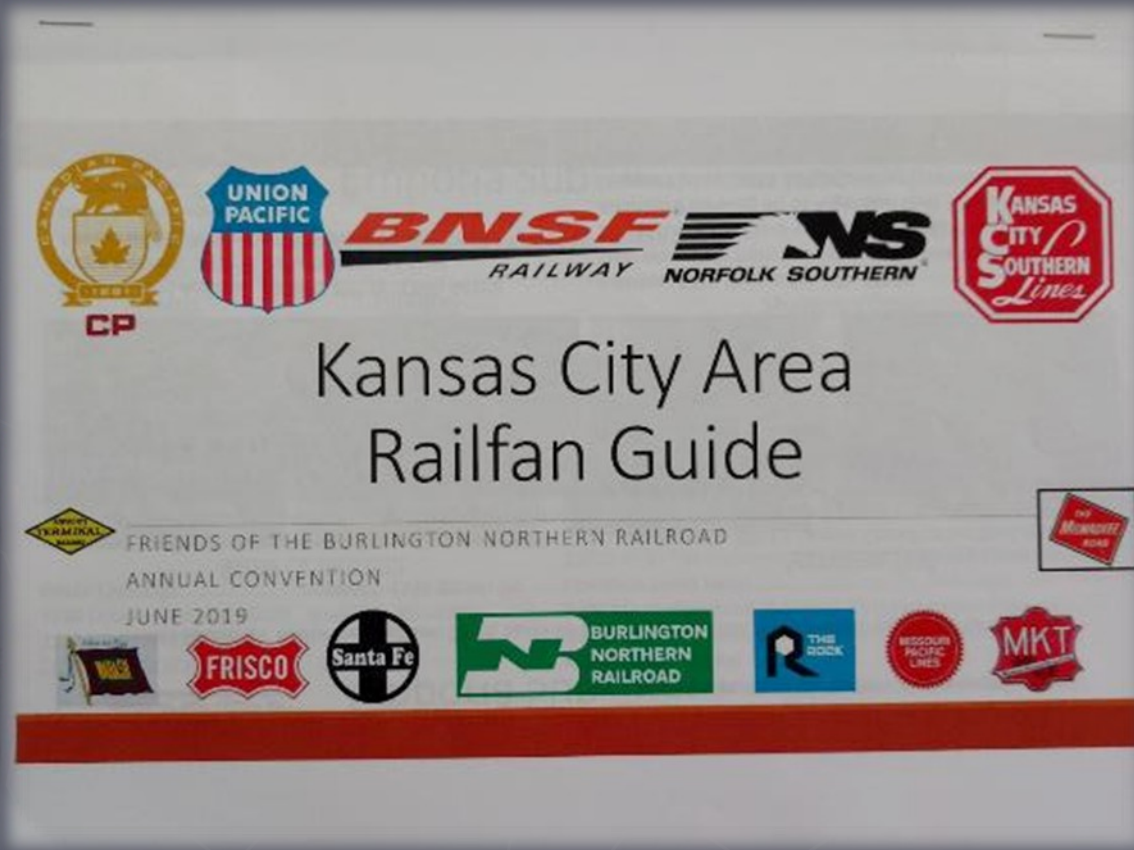
Right Photo by Benjamin Hucker.



2019 Convention

Wednesday Evening June 5

Evening Program



Mark Steenwyk, Locomotive Engineer, BNSF Railway, presented the evening program on Railroads and Railfanning in the area. He substituted for Ewan Shortess as Ewan had to work the "hot seat" in Argentine Yard this night.



2019 Convention

Wednesday Evening June 5

Evening Program



Emporia Sub

Santa Fe Jct, KS to Wellington, KS (Transcon)

Train Count: 85 Radio Frequencies: Ch 65 Santa Fe Junction to Gardner; Ch 32 within Argentine Yard

Santa Fe Junction

Busiest interlocker in the US with Tons of Action!! BNSF's Transcon, Coal Route, UP Main Line and Interchange Traffic



Ground Level Address: 1888 W 25th St KCMO 64108
Bridge Address: 2600 Bl State Dr KCMO 64209
Amtrak MO River Runner Wyes Here around 1500
Not Recommended At Night

Argentine Yard

Argentine is BNSF's Largest Classification Yard and the Second Largest in the United States



Address: 4215 Kansas Ave KCK 66106
Only Accessible from Several Bridges Over Tracks:
12th St (Left), Goddard Viaduct (Right), 42nd St, 55th St
Additional Viewing off of Argentine Blvd, Kansas Ave, and Clobber Field (1200 S 34th St)



Emporia Sub

Santa Fe Jct, KS to Wellington, KS (Transcon)

Train Count: 85 Radio Frequencies: Ch 65 Santa Fe Junction to Gardner

Morris

West Throat of Argentine Yard with 4 Mains



Holiday

Emporia and Topeka Subs Split at CP Holiday



Shawnee/Craig

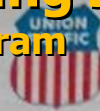
Several Overpasses and Access Points



Grade Crossings:
7230 Douglas Ave KCK 66106
2130 S 74th St KCK 66106
2500 S 78th St KCK 66106

Address: 4731 Wilder Rd Shawnee, KS 66206

20250 W 55th St Shawnee, KS (Adjacent Baseball Fields Can Also Provide A Good View)
7100 Martindale Road Shawnee, KS (Unobstructed Views)
19803 W 87th Ln Lenexa, KS (Park and Walk South on Trail Along/Under Tracks)
11400 S Millview Road Olathe, KS (Another Trail Parking Lot)



Kansas Side

Train Count: Varies Radio Frequencies: Ch 48 Quindaro Yard; Ch 94 Kansas Sub; Ch 58 KC Metro Sub

Quindaro Yard

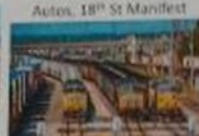
Local Serving Yard on Falls City Sub



Quindaro Yard is in the Fairfax Neighborhood of KCK (Not the greatest area) There are a lot of cool industries in Fairfax, yard at 252 Stanley Rd KCK 66115

Armourdale Yard/18th St Yard

Armourdale Switches Autos, 18th St Manifest



Not a whole lot of access to this yard: overpasses on 10th St, Mill St, and 7th St Some stored SD60Ms may be visible on the South side

Highway 32

Highway Parallels UP Kansas Sub



Start at 6434 KS-32 KCK and Take It West until Bonner Springs

West Bottoms

Made Famous by Doc's Caboose on KC Metro Sub



1401 Union Ave KCMO
1299 St Louis Ave KCMO
Are the two famous diagonal crossings



Missouri Side

Train Count: Varies Radio Frequencies: Ch 17/19 Neff Yard; Ch 44 Trenton Sub; Ch 38 KC Metro Sub

Neff Yard

Ex-MoPac Hump Yard and Intermodal Facility



951 Chouteau Trafficway goes right over the Hump 6499 Martin Ave goes into the Yard, Technically a Public Road but it doesn't look like it

Liberty

UP Trenton and CP Action Before they Split



499 Suddarth St Liberty, MO 64068
Includes both UP and CP action before lines split

Airline Junction

Junction with tons of UP and KCS Action



7210 E Gardner Rd KCMO 64120 will get you in the middle of the Junction (Do Not Go West/South of Here) Do Not Fan at Night

Missouri River Trail

UP KC Metro Sub and BNSF Hannibal and AS&B Bridges



Enter Trail at 123 Main St KCMO 64011 and Head North to River, trail runs along KC Metro Sub with views of Hannibal and AS&B Bridges

Mark's excellent presentation included Ewan Shortess' 18 page Railfan Guide handout. I will keep this handout as we return at least annually to KC & Missouri to visit friends and family so it will be put to good use. Thanks, Ewan!

2019 Convention

Thursday Morning June 6

National Academy of Railroad Sciences Tour



National Academy of Railroad Sciences
NARS
RAILROAD TRAINING EXCELLENCE

THE NATIONAL ACADEMY OF RAILROAD SCIENCES

National Academy of Railroad Sciences (NARS) at Johnson County Community College,
Overland Park, KS.

2019 Convention

Thursday Morning June 6

National Academy of Railroad Sciences Tour

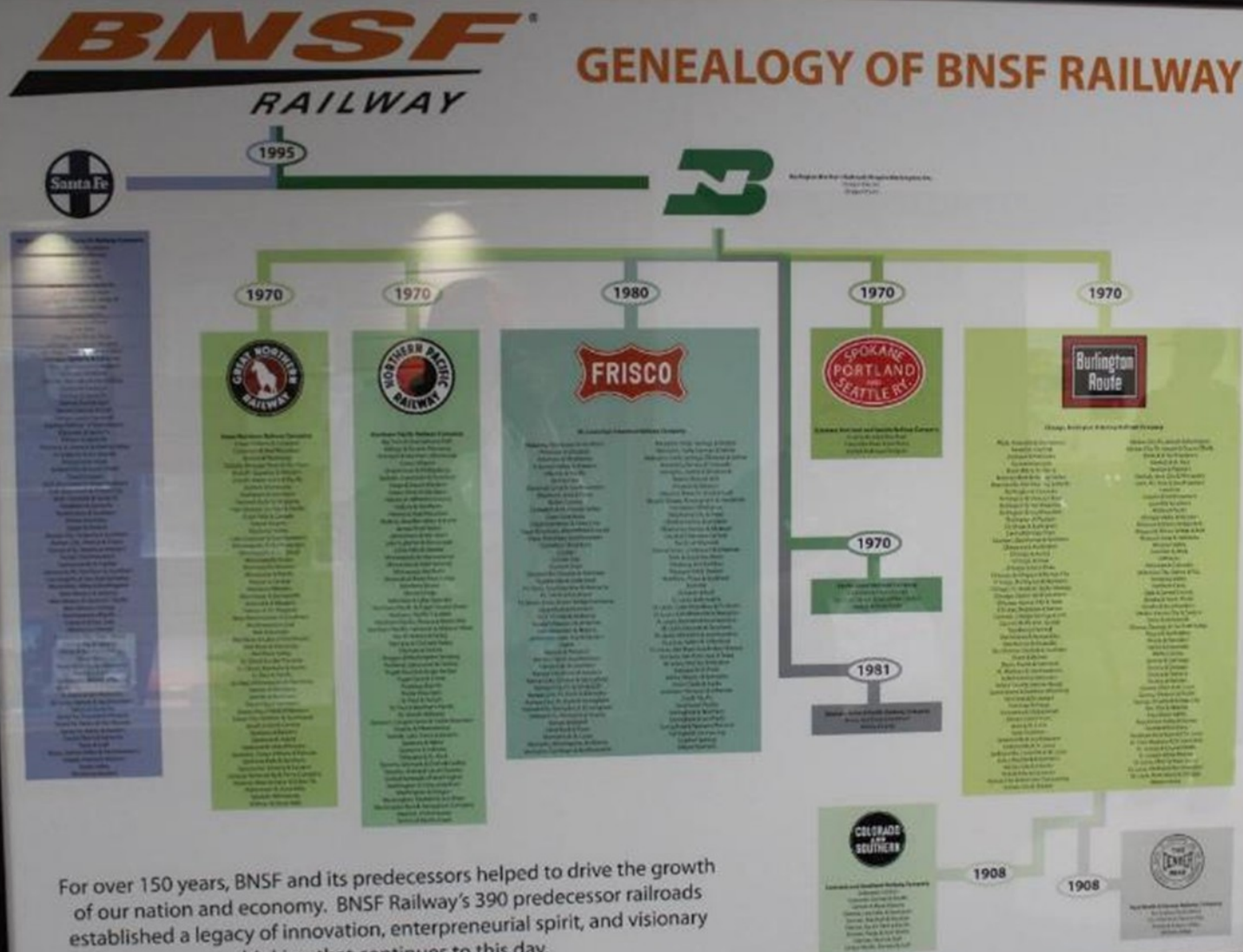


**"Burlington Thunder" by Robert West.
Painting at NARS.**

2019 Convention

Thursday Morning June 6

National Academy of Railroad Sciences Tour

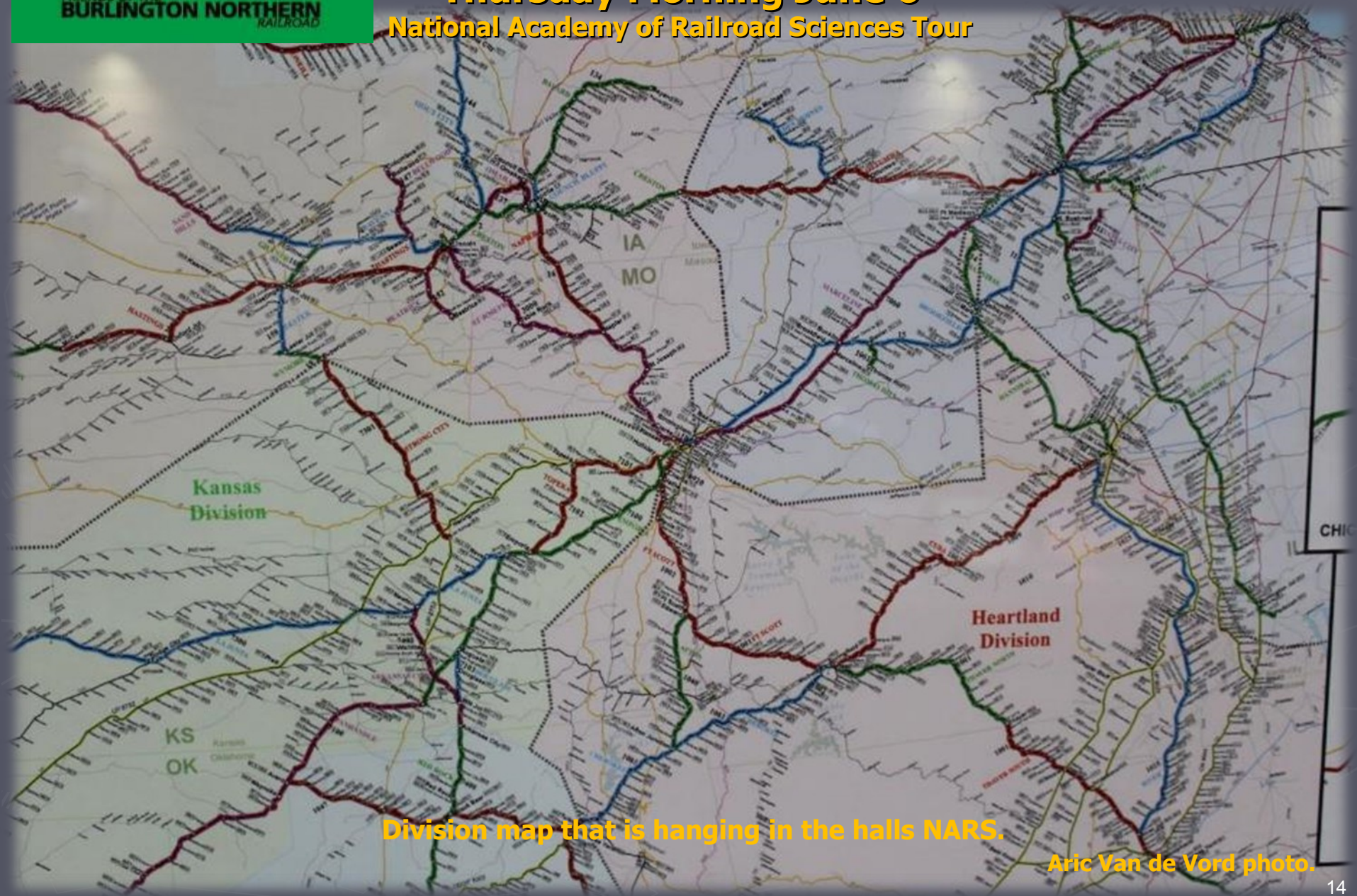


"Genealogy of BNSF Railway" hanging in the halls at NARS. Aric Van de Vord Photo.

2019 Convention

Thursday Morning June 6

National Academy of Railroad Sciences Tour



2019 Convention

Thursday Morning June 6
National Academy of Railroad Sciences Tour



Thomas is at the throttle of the locomotive simulator at NARS. Instructor Bob McNay explains what's happening on the simulation. Thomas ran it like a pro.

2019 Convention

Thursday Morning June 6

National Academy of Railroad Sciences Tour



Aric (above) and John (right) take their turns on the Simulator at NARS.

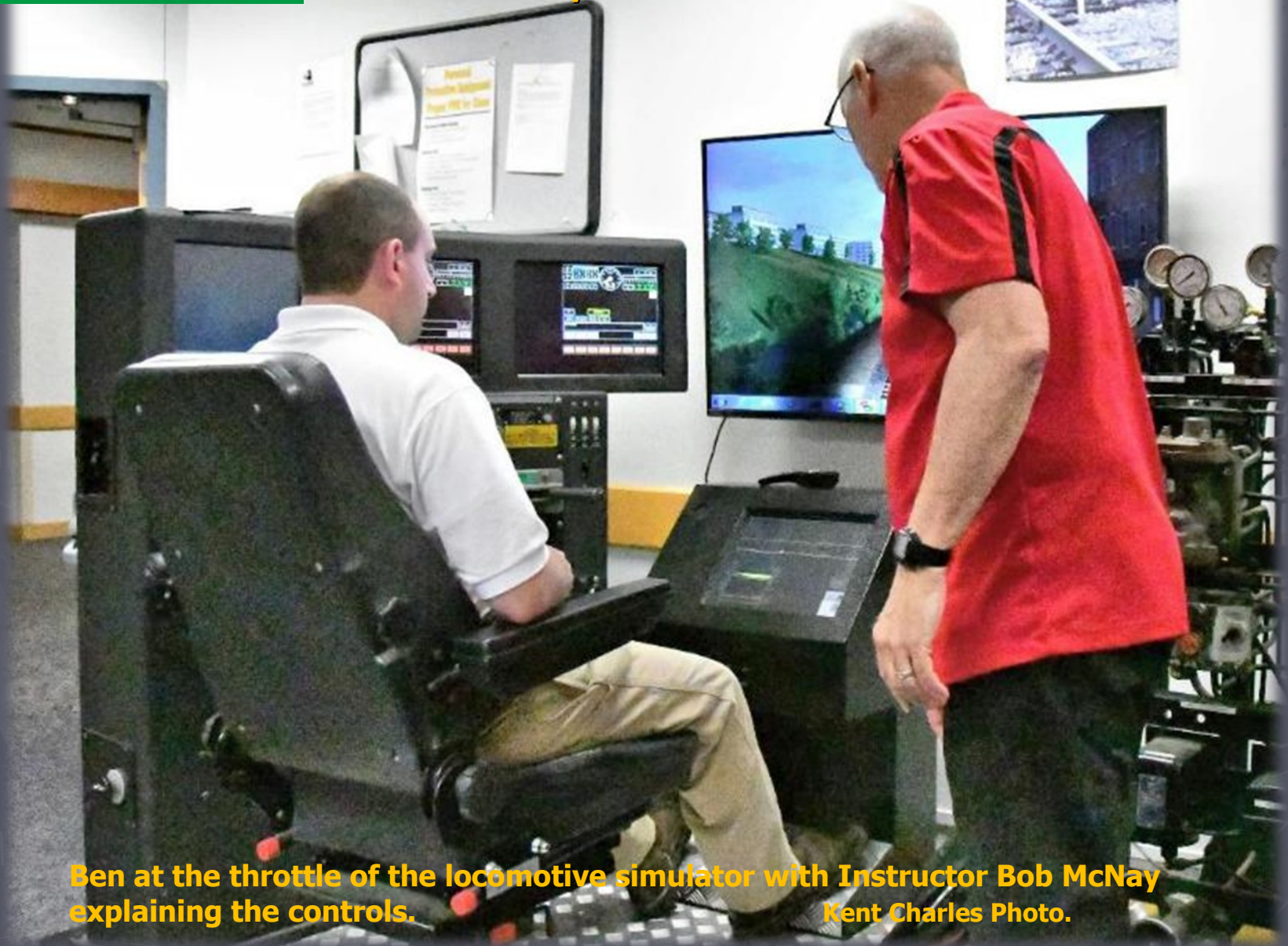
Mark Steenwyk Photos.



2019 Convention

Thursday Morning June 6

National Academy of Railroad Sciences Tour



Ben at the throttle of the locomotive simulator with Instructor Bob McNay explaining the controls.
Kent Charles Photo.

2019 Convention

Thursday Morning June 6
National Academy of Railroad Sciences Tour



Photos of Dave taking his turn on the Simulator at NARS.

Mark Steenwyk photos above and above right.



Instructor Bob McNay explaining the controls.

2019 Convention

Thursday Morning June 6
National Academy of Railroad Sciences Tour



Private simulator booth where engineers are recertified at NARS.

2019 Convention

Thursday Morning June 6

National Academy of Railroad Sciences Tour



Diesel Lab at NARS.

Kent Charles Photo.

2019 Convention

Thursday Morning June 6

National Academy of Railroad Sciences Tour



Brake Lab at NARS.



2019 Convention

Thursday Morning June 6

National Academy of Railroad Sciences Tour



From Left: Thomas watches as the NARS instructor demonstrates the crane simulation in the classroom at NARS.

2019 Convention

Thursday Morning June 6
National Academy of Railroad Sciences Tour



From Left: Peter, Vasyl and Dave all watching the crane simulation in the classroom, though Peter is thinking "Will that model crane fit in my suitcase?".

Aric Van de Vord photo.

2019 Convention

Thursday Morning June 6
National Academy of Railroad Sciences Tour



Ex-CB&Q caboose remodeled into meeting/lounge space, at NARS.

Aric Van de Vord photo.

2019 Convention

Thursday Morning June 6

National Academy of Railroad Sciences Tour



From Left: Larry, Dave, Thomas, Peter, Mark, Annette, Dr. Terry Harrison (tour host and Director of NARS), and Vasyl inside remodeled caboose at NARS.

Aric Van de Vord photo.

2019 Convention

Thursday Morning June 6

National Academy of Railroad Sciences Tour



FOBNR Attendee Group photo at NARS.

2019 Convention

Thursday Morning June 6

National Academy of Railroad Sciences Tour



No matter what direction you go, you will find FOBNR members and the former BN lines.
Central hallway intersection at NARS.

2019 Convention

Thursday Afternoon June 6

Railfanning



Ben, Vincent, Mark, John, Lawrence(behind),Vasyl, Terry, Peg (behind), Thomas, and Dan. Mark is explaining to the group the layout of the Logistics Park Kansas City (LPKC) intermodal facility located between Gardner and Edgerton Kansas.

Aric Van de Vord photo.

2019 Convention

Thursday Afternoon June 6
Railfanning



Q Train blazes past a Westbound Stack Train departing LPKC.

Mark Steenwyk photo.

2019 Convention

Thursday Afternoon June 6
Railfanning



Z-WSPLPK9 finishes up its short trip as it pulls west toward LPKC.

Mark Steenwyk photo.

2019 Convention

Thursday Afternoon June 6

Railfanning

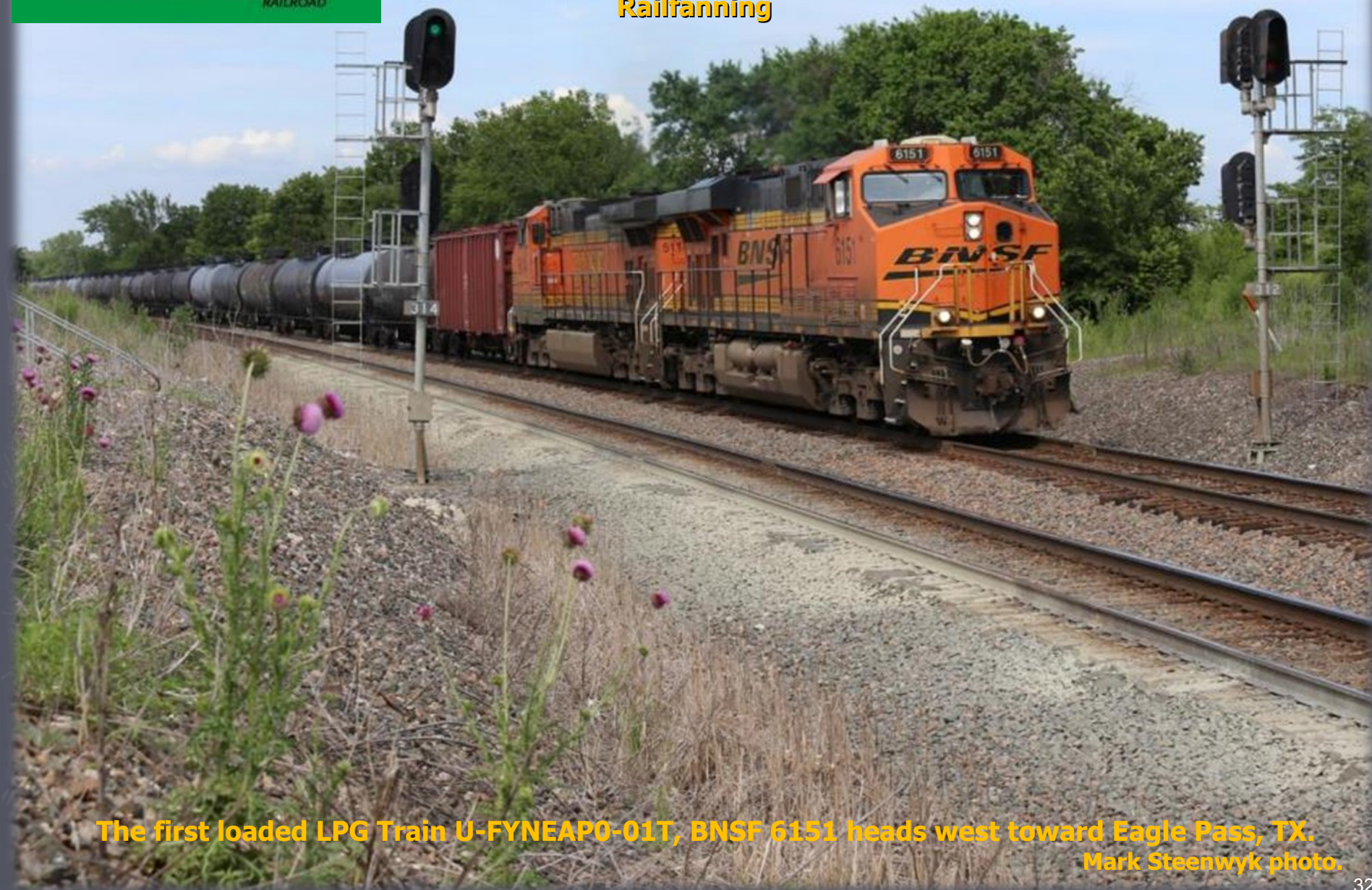


Z-WSPNBY8-06L, BNSF 4196 Headed west on the Emporia Subdivision Milepost 32.

Mark Steenwyk photo.

2019 Convention

Thursday Afternoon June 6
Railfanning



The first loaded LPG Train U-FYNEAPO-01T, BNSF 6151 heads west toward Eagle Pass, TX.
Mark Steenwyk photo.

2019 Convention

Thursday Afternoon June 6
Railfanning



Manifest Train H-KCKTPL3-05A, BNSF 3931 heads west on the Emporia Sub.

Mark Steenwyk photo.

2019 Convention

Thursday Afternoon June 6

Railfanning



Above: Thomas, Terry, Dan, Vincent, Vasyi, and Ben waiting for another westbound train near the Coleman warehouse on the Emporia Sub (BNSF Transcon) at Gardner, KS.

Aric Van de Vord Photo.

Right: BNSF 6571 splits the Intermediate Signals at MP 32.

Mark Steenwyk photo.



2019 Convention

Thursday Evening June 6

Membership and Board meetings

Some of
Peter's
Collection of
BN Items on
Display at the
Hotel.
Mark Steenwyk
photos.



2019 Convention

Friday Morning June 7

BNSF Topeka Shops Tour



Prior to the Topeka Shops tour, Some of us did a little railfanning.

Locomotives lined up for Class Overhaul at Topeka Shop, the string on the left just arrived on the D KCKTOP from Argentine Yard. BNSF 2871 (lower center of photo) is pre-BN 2/1/1964 in W Burlington, IA (Probably the CBQ), currently GP39-2R.

Ewan Shortess photo.

2019 Convention

Friday Morning June 7

BNSF Topeka Shops Tour



**Prior to the Topeka Shops tour, Some of us did a little railfanning in Topeka, KS.
A Late Amtrak No.4, heads East on the BNSF Topeka Subdivision.**

Mark Steenwyk photo.

2019 Convention

Friday Morning June 7

BNSF Topeka Shops Tour



**Prior to the Topeka Shops tour, Some of us did a little railfanning in Topeka, KS.
One of five "5 Man" cab GP50s built by BN.**

Ewan Shortess photo.

2019 Convention

Friday Morning June 7

BNSF Topeka Shops Tour

While waiting for our whole group to arrive, we shot some damaged locos from the parking lot.



Mark Steenwyk Photo.



2019 Convention

Friday Morning June 7

BNSF Topeka Shops Tour



BNSF 8191 and BNSF 1975 sit in the Wreck Line outside Topeka Shops.

Ewan Shortess photo.

2019 Convention

Friday Morning June 7

BNSF Topeka Shops Tour



While walking to the Main Office Entry, I shot some more wrecked locomotives.

2019 Convention

Friday Morning June 7

BNSF Topeka Shops Tour



Putting on provided PPE (Personal Protective Equipment - vests, hardhats, safety glasses, ear plugs and boots) at the Topeka Shops prior to the tour.

Kent Charles Photo.

2019 Convention

Friday Morning June 7

BNSF Topeka Shops Tour



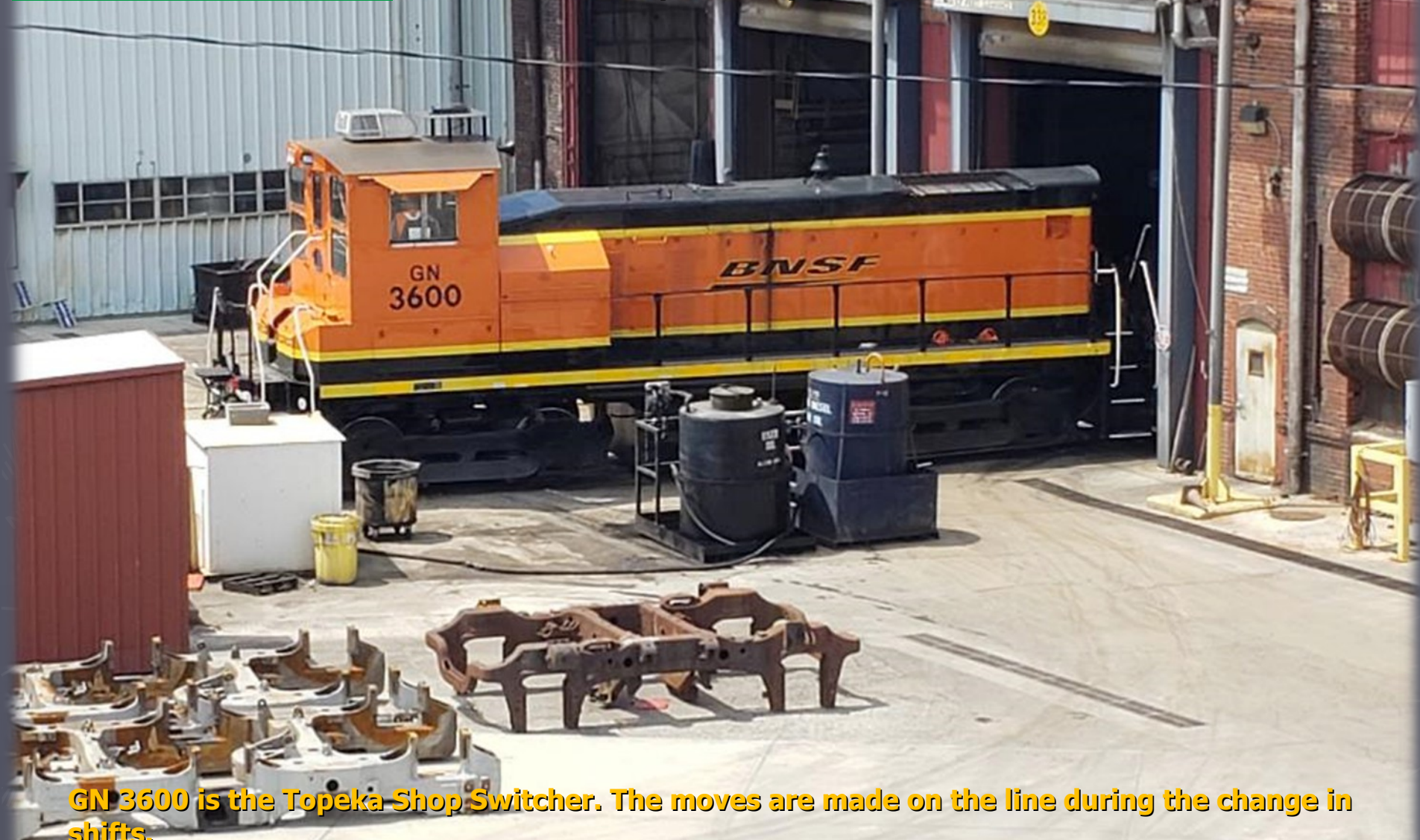
GN #3600, shop "goat" at BNSF Topeka shops, Topeka, KS, June 7, 2019.

Aric Van de Vord photo.

2019 Convention

Friday Morning June 7

BNSF Topeka Shops Tour



GN 3600 is the Topeka Shop Switcher. The moves are made on the line during the change in shifts.

Mark Steenwyk photo.

2019 Convention

Friday Morning June 7

BNSF Topeka Shops Tour



On the shop floor.

Kent Charles Photo.

2019 Convention

Friday Morning June 7

BNSF Topeka Shops Tour

Close-up of BNSF SD40-2 #1828. Per BNSF's system this is a straight up SD40-2, it was "brand new" on April 1, 1974 in W Burlington, IA. It was built as BN 6380.

Mark Steenwyk Photo.



2019 Convention

Friday Morning June 7

BNSF Topeka Shops Tour



BNSF 6716 is just about to start its journey on the Topeka Shop Rebuild Line.

Ewan Shortess photo.

2019 Convention

Friday Morning June 7

BNSF Topeka Shops Tour



Blue Flags on Loco on the shop floor. Note the employee tag-out ID's hanging from the blue flag – locomotive cannot be started or moved until those employees are accounted for.

Kent Charles Photo.

2019 Convention

Friday Morning June 7

BNSF Topeka Shops Tour



Thomas stands as "scale" for photo of 5,000-gallon fuel tank, assumed for BNSF #3174 an ex-Santa Fe GP50 #3821, in BNSF Topeka shops, Topeka, KS.

Aric Van de Vord photo.

2019 Convention

Friday Morning June 7

BNSF Topeka Shops Tour



Unwrapping and inspecting a new crankshaft at the BNSF Topeka shops.

Aric Van de Vord photo.

2019 Convention

Friday Morning June 7

BNSF Topeka Shops Tour



Engine block being refurbished.

Mark Steenwyk Photo

2019 Convention

Friday Morning June 7

BNSF Topeka Shops Tour



Above: The line reconditioning prime movers.
Above Right: Nicholas Marsh, our guide
explaining what is being done.
Right: A piston.

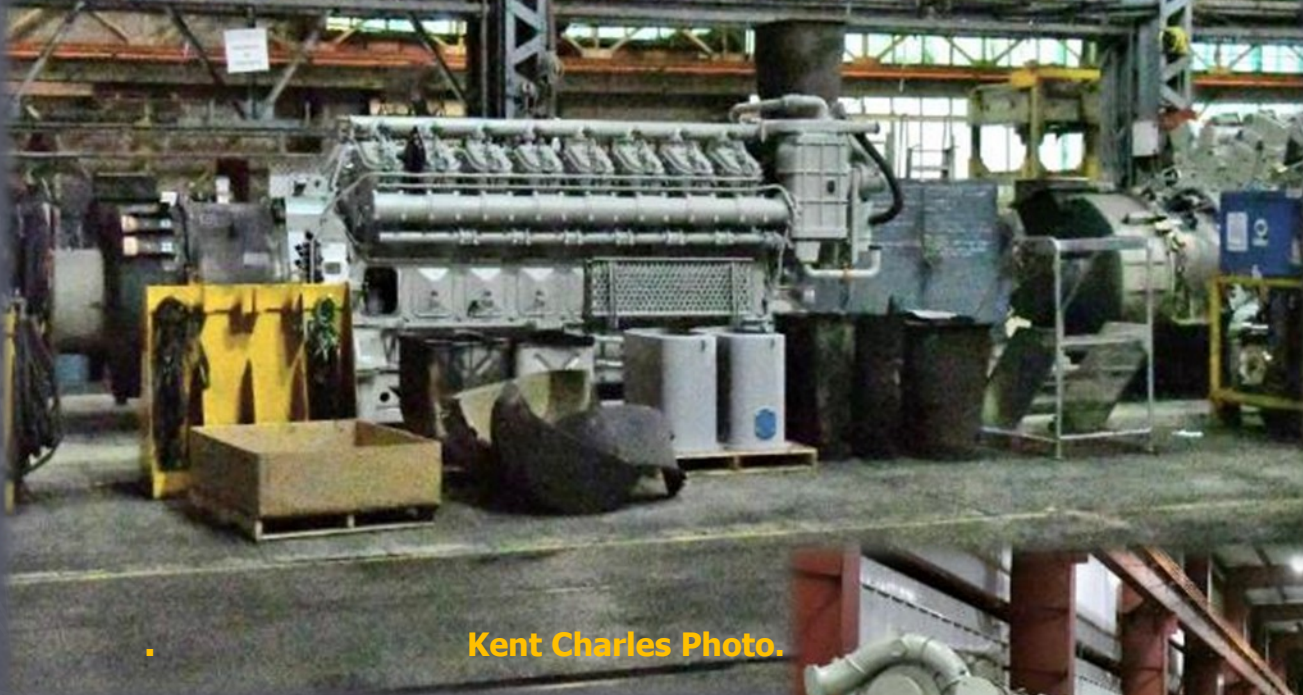
2019 Convention

Friday Morning June 7

BNSF Topeka Shops Tour



Mark Steenwyk Photo.



Kent Charles Photo.

Prime Movers ready to be installed.



Kent Charles Photo.

2019 Convention

Friday Morning June 7

BNSF Topeka Shops Tour



Inbound and outbound prime movers.

2019 Convention

Friday Morning June 7

BNSF Topeka Shops Tour



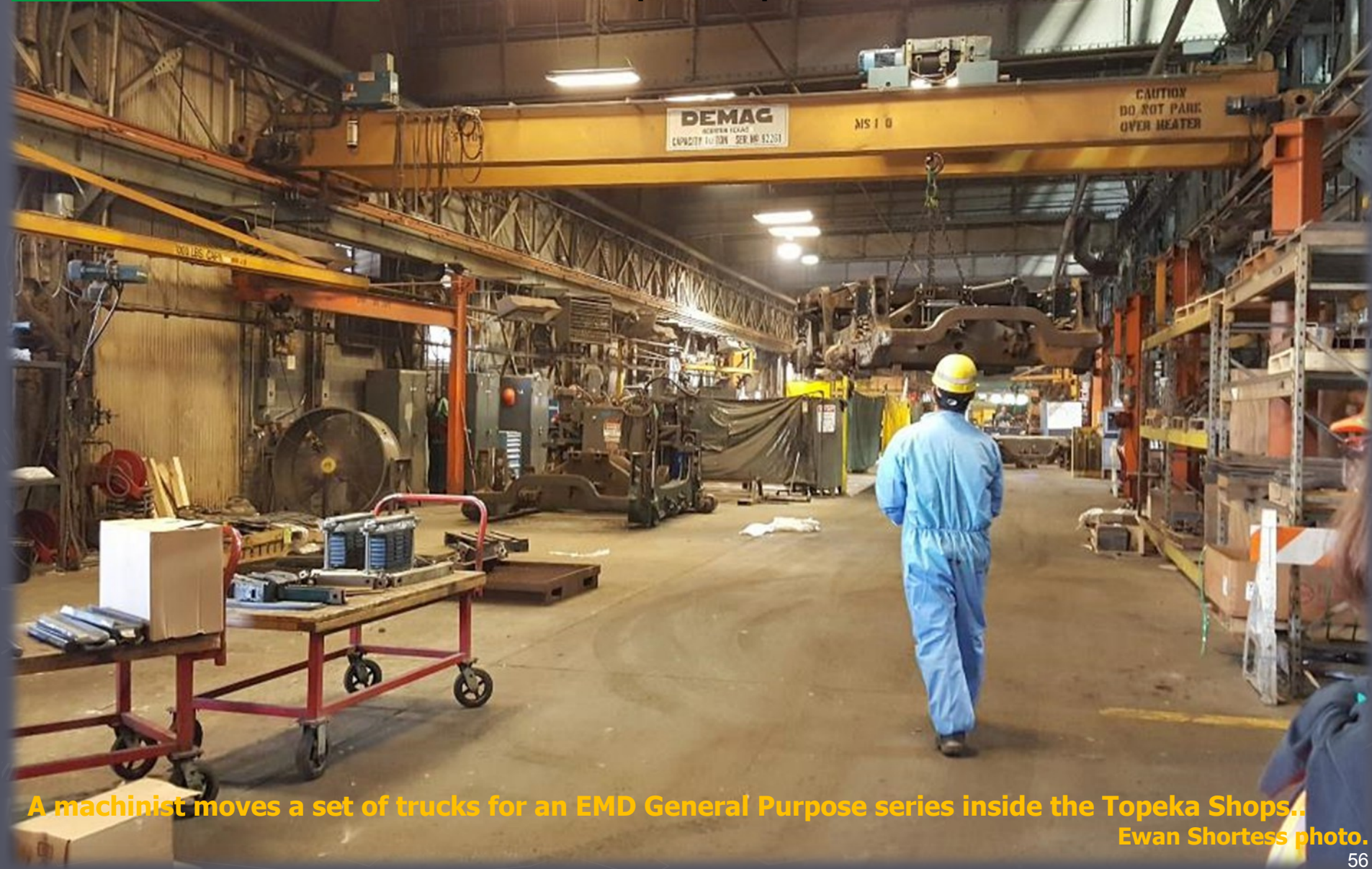
Future snowplows (left) and brand new snowplow (right). We will see the final painted snowplow version at Argentine Yard Diesel Service facility on Saturday.

Mark Steenwyk photo.

2019 Convention

Friday Morning June 7

BNSF Topeka Shops Tour



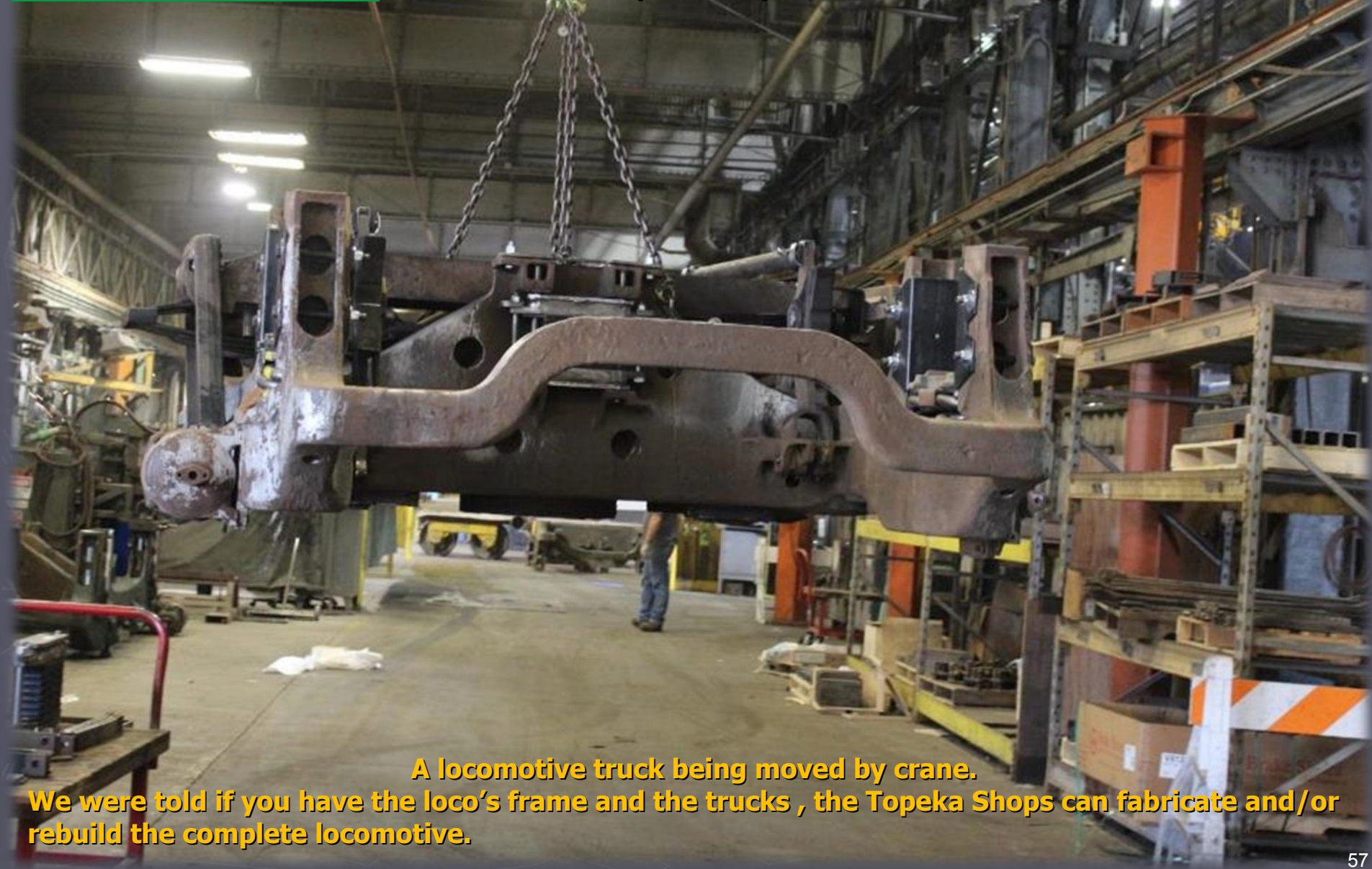
A machinist moves a set of trucks for an EMD General Purpose series inside the Topeka Shops..

Ewan Shortess photo.

2019 Convention

Friday Morning June 7

BNSF Topeka Shops Tour



A locomotive truck being moved by crane.

We were told if you have the loco's frame and the trucks, the Topeka Shops can fabricate and/or rebuild the complete locomotive.

2019 Convention

Friday Morning June 7

BNSF Topeka Shops Tour



Back on the shop floor.

2019 Convention

Friday Morning June 7
BNSF Topeka Shops Tour



Back on the shop floor.

BNSF 2957, GP39-2, built new 4/1/1980, rrpicturearchives.net says it was ATSF 3703.

2019 Convention

Friday Morning June 7

BNSF Topeka Shops Tour



Our guides taking our group photo.

Left to Right: Dave Samuels, Dan McDysan, Joshua Ray, Nicholas Marsh, Scott Dewalt
What a great bunch of guys. We learned a lot. Thank you!

Dave Poplawski Photo.

2019 Convention

Friday Morning June 7

BNSF Topeka Shops Tour



Group photo at BNSF Topeka shops, Topeka, KS, June 7, 2019.

Benjamin Hucker Photo

2019 Convention

Friday Morning June 7

Railfanning Topeka



End views of liquefied natural gas (LNG) fuel tenders, at BNSF Topeka shops near the coach storage yard, Topeka, KS, June 7, 2019.

Aric Van de Vord photo.

2019 Convention

Friday Morning June 7

Railfanning Topeka



**BNSF SD40-2 #1870, at BNSF Topeka shops on east end storage tracks, Topeka, KS.
Per BNSF system, built new 6/1/1977 in Alliance, Nebraska, built as BN C&S 940, then C&S
7810, then BN 7810.**

Aric Van de Vord photo.

2019 Convention

Friday Morning June 7

Railfanning Topeka



The infamous "East Field" in Topeka includes stripped SD70MACs 9415 and 9600.

Ewan Shortess photo.

2019 Convention

Friday Morning June 7

Railfanning Topeka



Worn out after hauling coal for many years, this SD70MAC takes a short break.

Mark Steenwyk photo.

2019 Convention

Friday Morning June 7

Railfanning Topeka



Topeka AMTRAK Depot.

2019 Convention

Friday Morning June 7

Railfanning Topeka



Lash up of BNSF 2641, 2652, and 2835 near depot.

2019 Convention

Friday Morning June 7

Railfanning Topeka



ATSF Caboose used for platform only, near Topeka depot.

2019 Convention

Friday June 7
Lunch



Following our Topeka Shops tour, a number of us ate lunch at the Iron Rail in downtown Topeka, KS. Some of the interesting railroad themed art displayed at the Restaurant.



Mark Steenwyk Photo.

2019 Convention

Friday Afternoon June 7
Railfanning



Out and About in Topeka, this BNSF Grain Train "G TOPPTN" sits on the Former Atchison Main, after being loaded at an elevator along the Union Pacific mainline in Topeka, KS.

Mark Steenwyk Photo.

2019 Convention

Friday Afternoon June 7

Railfanning



The Great Overland Station in Topeka, former Union Pacific Passenger Depot.

Ewan Shortess Photo.

2019 Convention

Friday Afternoon June 7
Railfanning



UP 2564 leads a short K train off the Golden State Route in Topeka.

Ewan Shortess Photo.

2019 Convention

Friday Afternoon June 7
Railfanning



Westbound oil on Marceline Sub (BNSF Transcon) along Cement City Rd. in Sugar Creek, MO.
Aric Van de Vord photo.

2019 Convention

Friday Afternoon June 7
Railfanning



Idling on Marceline Sub (BNSF Transcon) at Sugar Creek station looking west, Sugar Creek, MO.
Aric Van de Vord photo.

2019 Convention

Friday Afternoon June 7
Railfanning



Kansas City Terminal Railway WAMX #3855 pulls a short cut of empty centerbeam railcars eastbound through Sheffield neighborhood along Winner Rd, large building in background was Army Quartermasters Depot built in 1941 and currently serves as a public storage business, in Kansas City, MO.

Aric Van de Vord photo.

2019 Convention

Friday Afternoon June 7

Railfanning

(CHECKED BAGGAGE)
BAGGAGE CHECK IN HOURS
TRAIN 4 600A TO 645A
TRAIN 3 600P TO 1000P
TRAIN SCHEDULES

TRAIN	ARRIVALS	DEPARTS
4	653 A	728 A
314		815 A
311	2 55 P	
316		400 P
313	940 P	
3	1000P	10 43 P

NO TICKETS ISSUED 5 MIN OF DEPARTURE.
THANK YOU FOR RIDING AMTRAK!

Union Station schedule
board, Kansas City, MO.
Aric Van de Vord photo.

2019 Convention

Friday Evening June 7

Modeling showcase



N Scale Models by John Adams.

2019 Convention

Friday Evening June 7

Modeling showcase



HO scale models by Mark Steenwyk.

2019 Convention

Friday Evening June 7

BNSF Railway Kansas City Overview



Following dinner on our own, Ewan Shortess, Trainmaster, BNSF Railway, presents an overview of BNSF in Kansas City.

2019 Convention

Friday Evening June 7
BNSF Railway Kansas City Overview

Argentine Yard – Transfers and Locals

Transfer Drags to:

BNSF Murray Yard (N Kansas City, MO)
UP 18th St Yard (Kansas City, KS)
UP Neff Yard (Kansas City, MO)
KCS/CP Knoche Yard (Kansas City, MO)
NS Avondale Yard (N Kansas City, MO)

Local/Industry Drags to:

Job 122 Industries around Argentine
Job 123 Olathe/Gardner/Ottawa, KS
Job 191 19th St Yard / Ft Scott Sub
L CHI0071 Marceline Sub to Marceline, MO

Argentine Yard – Arrivals and Departures

Inbounds from:

Galesburg, IL
Memphis, TN
Wichita, KS
Dodge City, KS
Amarillo South Yard, TX
Tulsa, OK
Lincoln, NE
Willmar, MN
Pasco, WA
Eola, IL
McCook, NE
Chattanooga, TN (via NS)

Departures to:

Galesburg, IL
Memphis, TN
Wichita, KS
Dodge City, KS
Amarillo South Yard, TX
Tulsa, OK
Lincoln, NE
Northtown, MN
Laurel, MT
Temple, TX
Belen, NM
Barstow, CA

A few example slides of Ewan's overview of BNSF in Kansas City.

2019 Convention

Friday Evening June 7
BNSF Railway Kansas City Overview

BNSF

Murray Yard – Arrivals and Departures

Departures to:	
	Omaha, NE
	St Joseph, MO (And Back)
	Kansas City, KS (Argentine Yard)
	Kansas City, MO (Knoche Yard)*

*Unit Grain and Coal Trains are interchanged with the KCS from Murray

Local/Industry Drags to:	
J142	10 th St Yard and North Industries
R HLA456	Kearney Missouri Industries
R HLA6911	Ft Scott Sub (Merriam to Spring Hill)
KAW Drag	KAW River Railroad Interchange

12

A few example slides of Ewan's overview of BNSF in Kansas City.

2019 Convention

Friday Evening June 7
BNSF Railway Kansas City Overview

Emporia Sub – Grain Special Moves

BNSF



- Cargill Moves Raw Material Slurry for their "Sweet Bran" Cattle Feed
- They Use First Generation BN Aluminum Coal Cars with Tops
- Origins: Eddyville, IA; Fort Dodge, IA; Council Bluffs, IA
- Destinations: Bovina, TX and Dalhart, TX

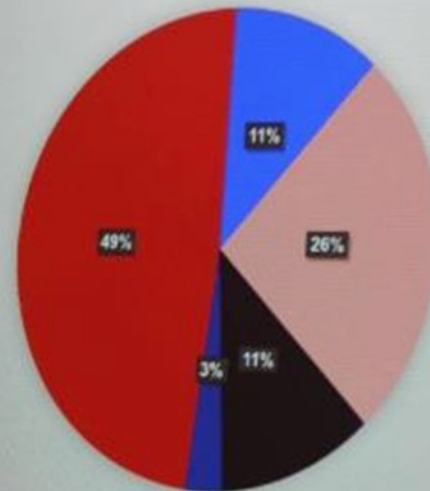
© Zach Pumphrey

BNSF Interchanges Unit Grain Trains with:
Canadian National Railway – Sioux City, IA and E Dubuque, IL
Iowa Interstate Railroad – Council Bluffs, IA and Rock Island, IL

Emporia Sub – Grain

BNSF

Destination City



California
Mexico
Midwest
Other
Texas

"Midwest" trains are Fertilizer Trains from Texas to Minnesota/South Dakota

A few example slides of Ewan's overview of BNSF in Kansas City.

2019 Convention

Saturday Morning June 8

Argentine Yard Tour



**Shooting photos at BNSF's Argentine Yard while waiting for the tour bus to arrive, Kansas City, KS.
BNSF #2723 is a GP39-2 in upper right photo, was built new 4/1/1981 (same BN road number).**



2019 Convention

Saturday Morning June 8

Argentine Yard Tour



Loading the tour bus at BNSF's Argentine Yard, Kansas City, KS. Our tour guide for the morning is Ewan Shortess (second from left in safety vest).

Kent Charles photo.

2019 Convention

Saturday Morning June 8

Argentine Yard Tour



Larry, Mark, Terry, Dave, Thomas, Brian, Kent, Mike, Dan, Vasyl, and John at first stop in Argentine Yard tour. Mark is telling us about the Argentine Tower (no longer in use) and crew facilities in this part of the yard. I-635 overpasses are just to the west of the tower, Kansas City, KS.

Aric Van de Vord photo.



2019 Convention

Saturday Morning June 8

Argentine Yard Tour



A string of cars coming down from the crest of the Argentine Yard hump.

2019 Convention

Saturday Morning June 8

Argentine Yard Tour



The group retarders as seen from the bus.

2019 Convention

Saturday Morning June 8

Argentine Yard Tour



Our next stop

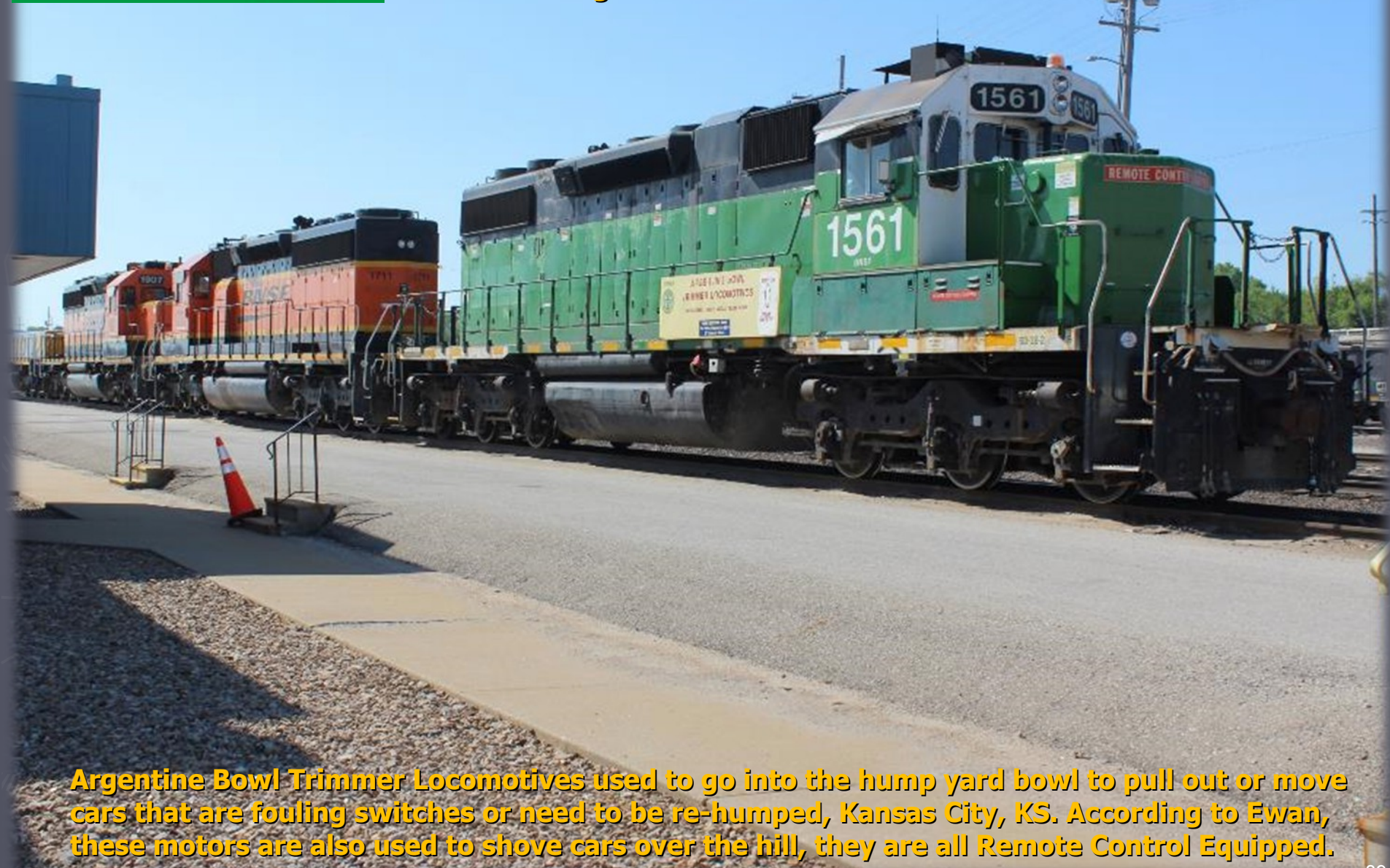


Ben assisting the bus driver with directions.

2019 Convention

Saturday Morning June 8

Argentine Yard Tour



Argentine Bowl Trimmer Locomotives used to go into the hump yard bowl to pull out or move cars that are fouling switches or need to be re-humped, Kansas City, KS. According to Ewan, these motors are also used to shove cars over the hill, they are all Remote Control Equipped.

2019 Convention

Saturday Morning June 8

Argentine Yard Tour



Ewan (left) and Peter (right) discussing BN #71 (ex-Santa Fe) yard slug that is part of trimmer locomotives set behind the hump yard office in Argentine Yard, Kansas City, KS.

Aric Van de Vord photo.

2019 Convention

Saturday Morning June 8

Argentine Yard Tour



Inside the HUMPYARD CREW SIGNAL building; Richard Thomas, BNSF Signal Technician, gives us an overview of the computer systems working the hump and its retarders.
Wow, this is so cool!

2019 Convention

Saturday Morning June 8

Argentine Yard Tour



Hump Distribution Sheet
Date: June 08, 2019

Average Hump Report				Average Actual per shift	
Shift 1	Shift 2	Shift 3	Total		
SIS					
TPC	534			534	534
TSS					
Boat Count					
Manhole Report					
Process Control					
Stall Report					
Overpass					
Site Data					
Shift 1	Shift 2	Shift 3	Total	Shift 1	Shift 2
84.02	17.31%	187.75	75.14%	11.92	0.87%
84.02	0.00%	1	0.00%		0.00%
84.02	0.00%	1	0.00%		0.00%
Totals	84.02	0.00%	188.76	75.14%	11.92
Shift Entry	40 minutes				
Process Entry	40 minutes				
Total Entry	80 minutes				



Inside the HUMPYARD CREW SIGNAL building, various computer screens give yard status and you can watch the action out the front windows at the same time.

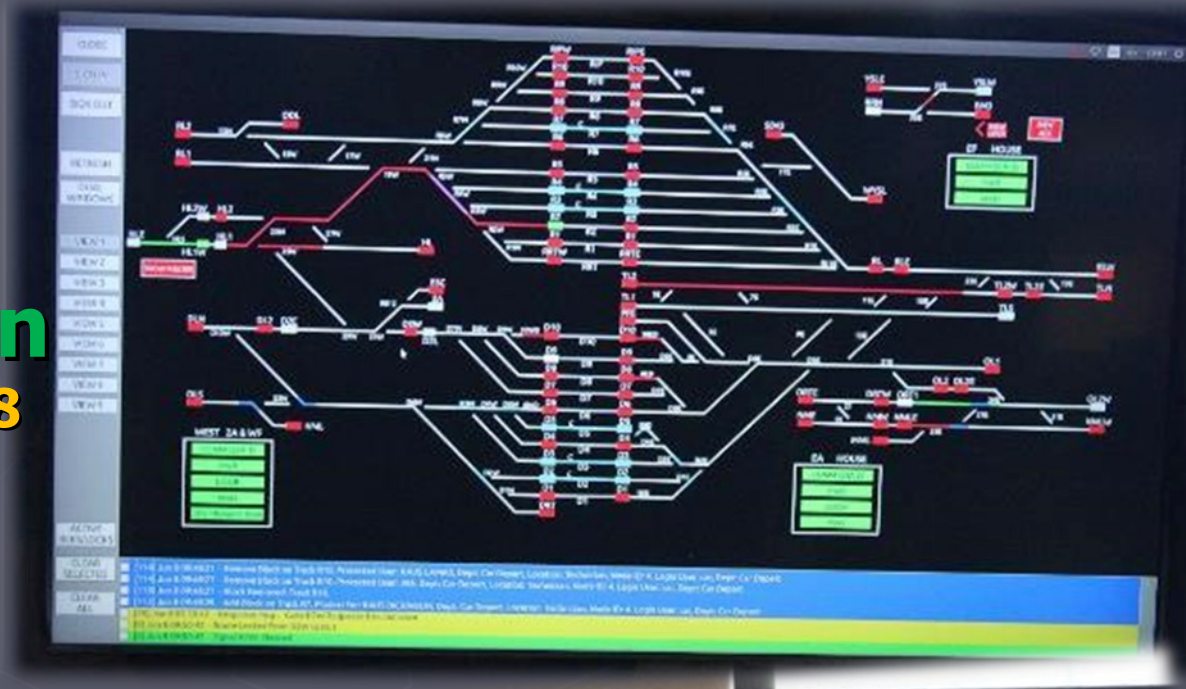
2019 Convention

Saturday Morning June 8

Argentine Yard Tour

Inside the HUMPYARD
CREW SIGNAL building,
various computer screens
give yard status.

*I need one of these neat
computer programs for my
N scale Crandic RR hump
yard.*



2019 Convention

Saturday Morning June 8

Argentine Yard Tour



Inside the HUMPYARD CREW SIGNAL building, a car can be followed all the way to its classification track from a camera mounted on the canopy of the hump. The top left shows a tank car leaving the crest, the screen in the middle shows the same tank car in the group retarders, and in the lower right, the tank car is entering its classification track while a gondola starts down.

2019 Convention

Saturday Morning June 8

Argentine Yard Tour

**SLOW
APPROACH
DOOR WITH
CAUTION**

Inside the HUMPYARD CREW SIGNAL building is a garage for ATVs used by the the Signal crew who are also responsible for fixing the retarders. Note the hula girl on the hood.



2019 Convention

Saturday Morning June 8

Argentine Yard Tour



Moving a damaged car.

Kent Charles photo.

2019 Convention

Saturday Morning June 8

Argentine LMIT Tour

**Welcome to
Argentine LMIT**

*"Proud to be a diverse group of
Professionals committed to
Safety as a core value"*



Ewan leading us to the Locomotive Maintenance Inspection Terminal (LMIT).

2019 Convention

Saturday Morning June 8

Argentine LMIT Tour



Left: Matt Brallier, BNSF General Foreman II, our tour guide.

Right: required PPE.

2019 Convention

Saturday Morning June 8

Argentine LMIT Tour



Artist rendition of what the final facility build-out will look like.

2019 Convention

Saturday Morning June 8

Argentine LMIT Tour



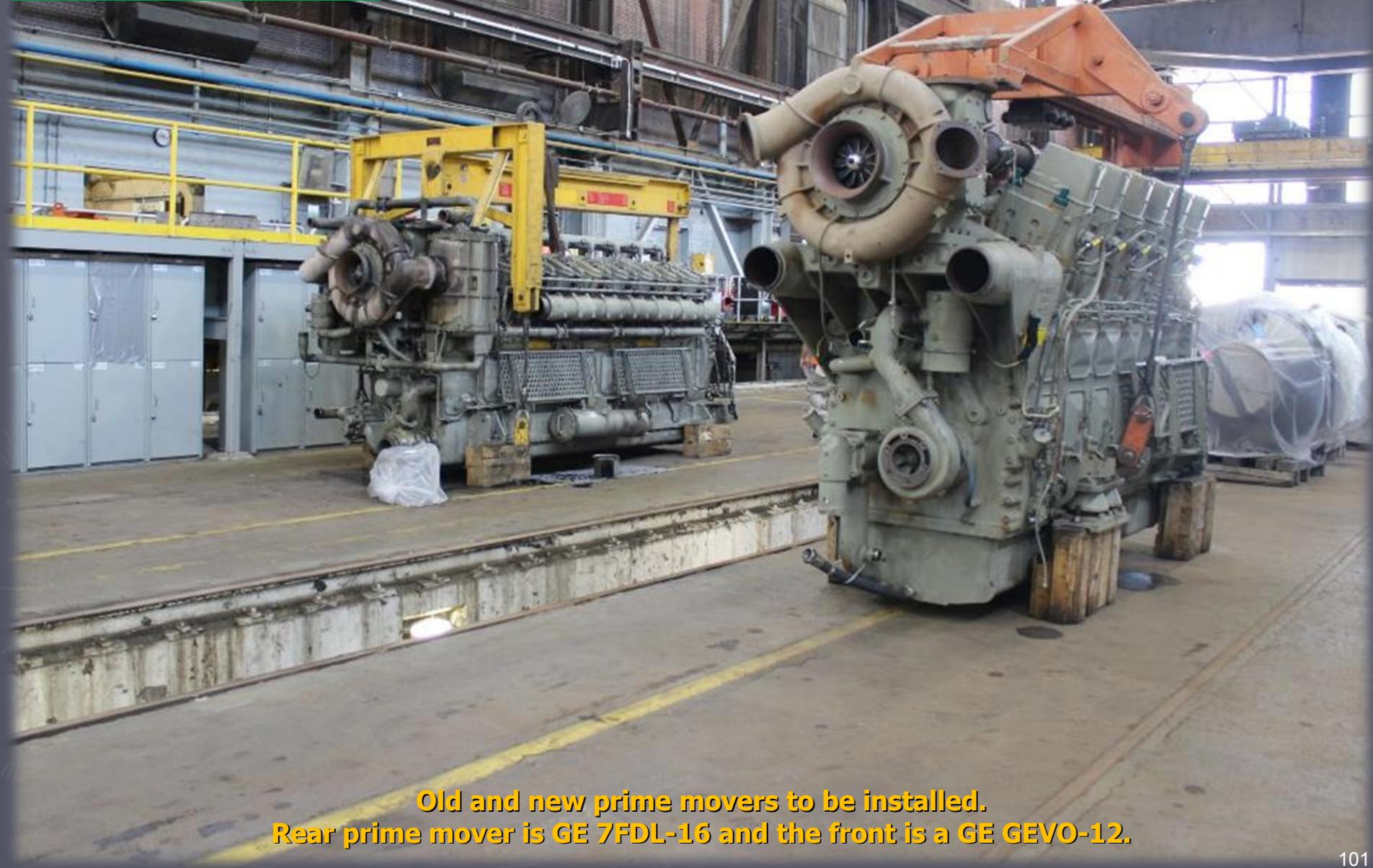
BNSF 3961 in the High Bay at Argentine LMIT.

Ewan Shortess photo.

2019 Convention

Saturday Morning June 8

Argentine LMIT Tour



Old and new prime movers to be installed.
Rear prime mover is GE 7FDL-16 and the front is a GE GEVO-12.

2019 Convention

Saturday Morning June 8

Argentine LMIT Tour

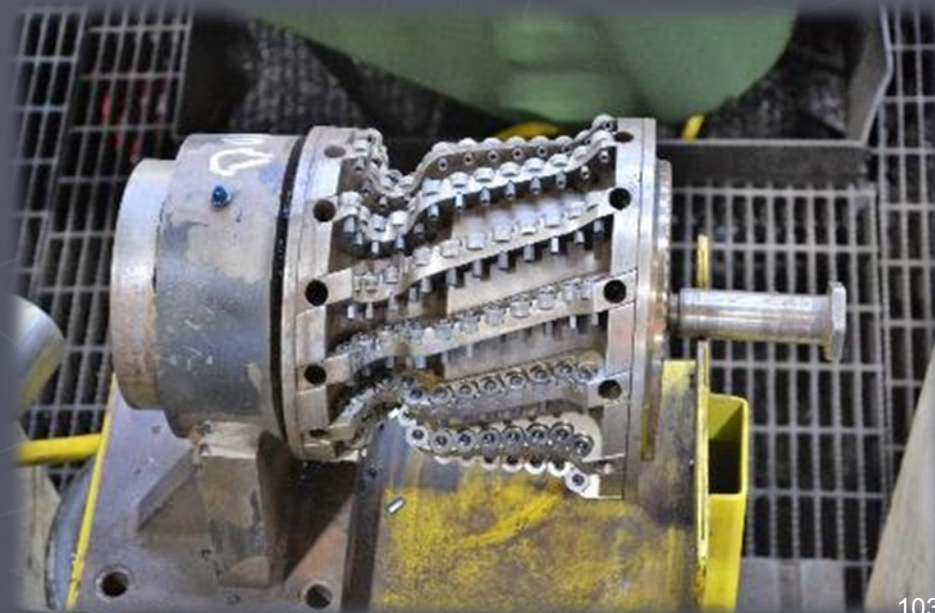


Matt Brallier, our BNSF guide (far right in white hardhat) telling us about maintenance procedures.

2019 Convention

Saturday Morning June 8

Argentine LMIT Tour



Above: The wheel-truing bay (grinding the locomotive wheels back into the proper profile).

Top right: wheel-truing station.

Bottom Right: wheel-truing grinder head.

Benjamin Hucker photos.

2019 Convention

Saturday Morning June 8

Argentine LMIT Tour

WARNING!
LIVE TRACK!
CHECK IN BOTH
DIRECTIONS BEFORE
PROCEEDING



Walking between Maintenance and Inspection (left) and Diesel Servicing Facility (right).

2019 Convention

Saturday Morning June 8
Argentine LMIT Tour



This building is the Diesel Servicing Facility where locomotives are refueled and resupplied.

2019 Convention

Saturday Morning June 8
Argentine LMIT Tour




Annette and Pat in their PPE pose in front of where the FRA 184 and 368 day inspections are carried out.

Kent Charles photo.

2019 Convention

Saturday Morning June 8

Argentine LMIT Tour



“Mr. Sandman” servicer is gliding in overhead sanding station that can span two lines of locomotives and runs up and down the length of the maintenance lines in this building. System raises and lowers the station to reach fill points on locomotives, sand is loaded into tram from above. The Diesel Servicing Facility has three lines, one sand crane operates over two lines, one sand crane only operates over one.

Aric Van de Vord photo.

2019 Convention

Saturday Morning June 8

Argentine LMIT Tour



This is where the 184/368 day inspections are completed.

Pat and Ben reading the "TASK AT HAND / JOB BRIEFING CHECKLIST" in the preventative maintenance line in Argentine Diesel Shops – note the employee tag-out ID's hanging from the blue SAFETY FIRST placard – locomotive cannot be started or moved until those employees are accounted for – Kansas City, KS.

Aric Van de Vord photo.

2019 Convention

Saturday Morning June 8

Argentine LMIT Tour



Serviced locomotive lines at Argentine Diesel Shops, looking west, Kansas City, KS.

2019 Convention

Saturday Morning June 8
Argentine LMIT Tour



Lunch room tabletop emblem.

2019 Convention

Saturday Morning June 8

Argentine LMIT Tour



Peg and John after the Argentine LMIT tour, posing in front of Kansas City Southern #4006 honoring U.S. military veterans, newly painted and unveiled in November 2018, Kansas City, KS.
Aric Van de Vord photo.

2019 Convention

Saturday Morning June 8

Argentine LMIT Tour



Snowplows like we saw at the Topeka shops on Friday.

2019 Convention

Saturday Morning June 8

Argentine Yard Tour



Various safety reminders.

Kent Charles and Pat Lana photos.

2019 Convention

Saturday Afternoon June 8
Railfanning

Two gondolas of wheels are being pushed onto the hump hill at west end of Argentine Yard, Kansas City, KS.

Aric Van de Vord photo.

2019 Convention

Saturday Afternoon June 8
Railfanning

Overhead shot of power being
lined up at west end of Argentine
Yard, Kansas City, KS.

Aric Van de Vord photo.



2019 Convention

Saturday Afternoon June 8
Railfanning



View of west end of Argentine Yard shows emphasis of auto racks in this portion of the yard, and the lead to the hump hill, shot from 55th St Overpass, Kansas City, KS.

Aric Van de Vord photo.

2019 Convention

Saturday Afternoon June 8

Railfanning



View of west end of Argentine Yard, Kansas City, Missouri skyline showing in the far distance, as another string of cars is pushed up the hump hill for reclassifying on the right. Taken from South 55th Street overpass, Kansas City, KS.

Aric Van de Vord photo.

2019 Convention

Saturday Afternoon June 8
Railfanning



BNSF 6910 leads the G EDYDHT5 05A across the Missouri River at Sibley, Missouri. This feed train carries cattle feed slurry from Eddyville, IA to Dalhart, TX for Cargill.

Ewan Shortess photo.

2019 Convention

Saturday Afternoon June 8
Railfanning



A Manifest train from Kansas City, KS to Galesburg, IL crosses Eastbound on the Sibley Bridge.

Ewan Shortess photo.

2019 Convention

Saturday Afternoon June 8

Railfanning



BNSF 8452 flies past Ben in Eton, Missouri at track speed with an empty grain train from Eagle Pass, TX destined for East Dubuque, Iowa and CN Interchange.

Ewan Shortess photo.

2019 Convention

Saturday Afternoon June 8
Railfanning



Ben's view of the grain train on previous slide.

Benjamin Hucker photo.

2019 Convention


Saturday Afternoon June 8
Railfanning



Tower at Santa Fe Jct.

2019 Convention

Saturday Afternoon June 8
Railfanning



Pat , “the troll under the bridge” at Santa Fe Jct. – below the second tier level which connects Union Pacific from the north crossing of the Kansas River behind the camera, to tracks leading to Union Station to the left (east). Above on third tier level, a BNSF grain train is moving eastbound from Argentine Yard to the right. At ground level in front of Pat is the Santa Fe Junction tower (previous photo). BNSF Ft. Scott Subdivision is reached at ground level by hugging the right of the green hillside behind Pat then heading south. Kansas City, MO.

Aric Van de Vord photo.

2019 Convention

Saturday Afternoon June 8
Railfanning



At Santa Fe Jct.

A BNSF grain train is moving eastbound from Argentine Yard on third tier level. Kansas City, MO.

2019 Convention

Saturday Afternoon June 8
Railfanning



AT Santa Fe Jct.
UP train on second tier crossing over Kansas River. Kansas City, MO.

2019 Convention

Saturday Afternoon June 8
Railfanning



Vince and Vasyi hang out in the shade at Santa Fe Junction (note the tower) waiting for some action. Shortly afterwards a very polite police woman showed up and asked us to move to a more "public" location a little farther from the tracks.

Dave Poplawski photo.

2019 Convention

Saturday Afternoon June 8
Railfanning



Heading out of the West Bottoms area of Kansas City, we enter downtown Kansas City, MO. One of the more unusual sculptures connected to Kansas City is a 5,500 pound fiberglass Hereford bull replica by Paul Decker. It is 11 feet, 8 inches tall and from nose to tail, it spans 19 feet, 7 inches. He has no official name but has sometimes been known as "Bob" for "Bull On Building." This statue will always be one of my favorites in Kansas City. Source: <https://kcparks.org/places/the-hereford-bull-2/>

2019 Convention

Saturday Afternoon June 8

Railfanning



Some of us decided to do a little model railroad railfanning and headed to Mark's Beer Line HO scale railroad. The Insert above is the back of his custom T-Shirt..

2019 Convention

Saturday Afternoon June 8
Railfanning



Mark's Beer Line HO scale railroad was featured in the November, 2011 *Model Railroader* magazine.

2019 Convention

Saturday Afternoon June 8
Railfanning

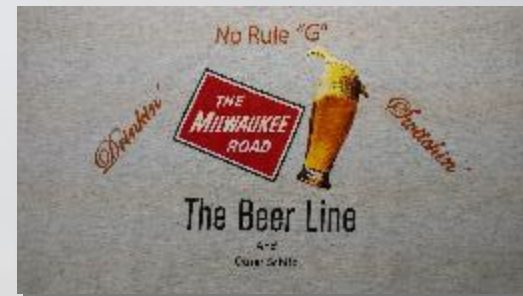


Mark demonstrating his lift out aisle bridges.

2019 Convention

Saturday Afternoon June 8

Railfanning



More information on Mark's Beer Line HO scale railroad can be found at
<http://kcprairierail.org/layouts/steenwyck/steenwyk.html>.



2019 Convention

Saturday Evening June 8
Banquet



Welcomes
Friend's
of
Burlington Northern Railroad
May 8, 2019

For Starters
Garden Salad

Entrée Choices
12 oz. Prime Rib

Slow roasted to perfection and rubbed with our signature seasonings. Served with aujus.

Chicken Piccata

Boneless chicken breasts, lightly breaded and pan seared, topped with artichokes, tomatoes, and capers in a béchamel sauce.

Accompaniments

Mashed Potatoes & Green Beans

Outlaw Pasta w/ Shrimp

Fettuccine noodles tossed with broccoli and red peppers. Topped with Parmesan Cheese and served with Garlic Bread. (does not include accompaniments)

For Dessert

Your choice of:

Chocolate Cake, Carrot Cake, or Vanilla Cheesecake



Source:

<https://www.herefordhouse.com/leawood.html>

Our Annual Banquet was held at the Leawood, KS Location of Hereford House.

Even with the misspellings, it was nice that Hereford House prepared a menu for us.

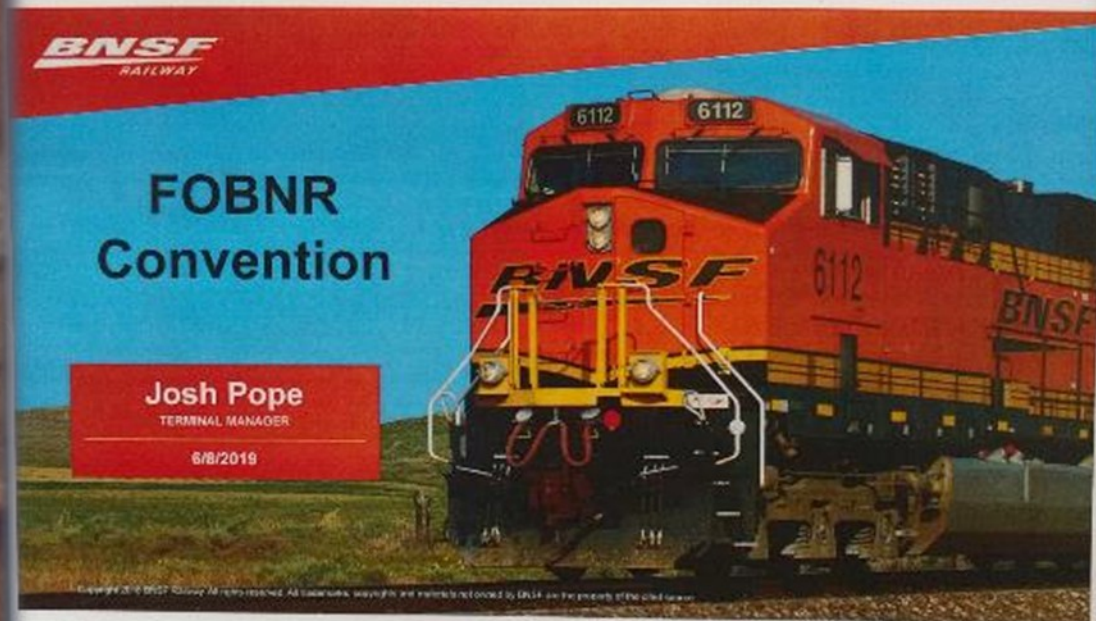
The Food was wonderful!



2019 Convention

Saturday Evening June 8

Banquet



Josh Pope, Terminal Manager, BNSF Railway was our Banquet Speaker at the Hereford House in Leawood, KS.

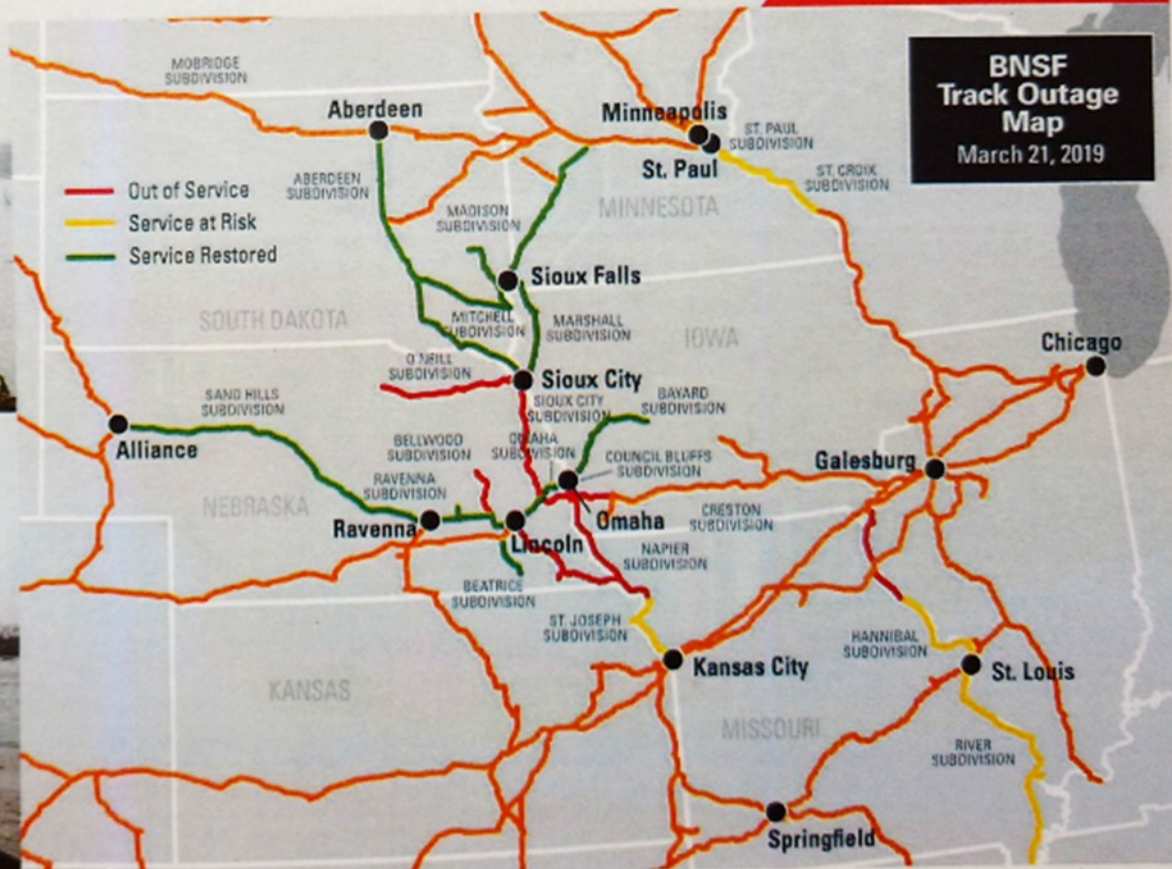
2019 Convention

Saturday Evening June 8

Banquet

Flooding Impacting Operations in Midwest

BNSF
RAILWAY



Mr. Pope gave an excellent PowerPoint slide presentation on how the March Midwest Floods impacted the BNSF and what plans and changes had been made to BNSF operations.

2019 Convention

Saturday June 8

Auction



After the banquet, John auctioned the items on the table to the right. In this photo everyone is concentrating hard not to twitch so John does not think they raised their hand to bid. However, Ben is ready to pull the trigger! Auction proceeds go to FOBNR.

Friends of the Burlington Northern RR 2019 Convention Kansas City, Kansas



Credits

A Special **THANK YOU** to Ewan Shortess, shown here in front of the Argentine Diesel Service Facility, for his efforts to get us into BNSF's Topeka and Argentine facilities. The convention was truly fascinating and informative.

Thanks, Ewan!



Friends of the Burlington Northern RR

2019 Convention

Kansas City, Kansas



Credits

Our Thanks to:

- **Ben Hucker, Dave Poplawski, Ewan Shortess, John Adams and Mark Steenwyk for their leadership in organizing this great convention.**
- **The contributors (Kent Charles, Ben Hucker, Dave Poplawski, Ewan Shortess, Mark Steenwyk and Aric Van de Vord) who provided excellent photos and information to use in this presentation.**
- **Dave Poplawski for posting this PowerPoint on the FOBNR Website.**
- **and most of all, to the Officers, Board Members and volunteers who keep the FOBNR running so well.**

Great Job, Guys!

Some Final Notes:



Why do I attend conventions like the FOBNR?

- Because of the lifelong friendships I form,
- the places I can get into that I normally would not be able to see, and
- because of the knowledge I gain.

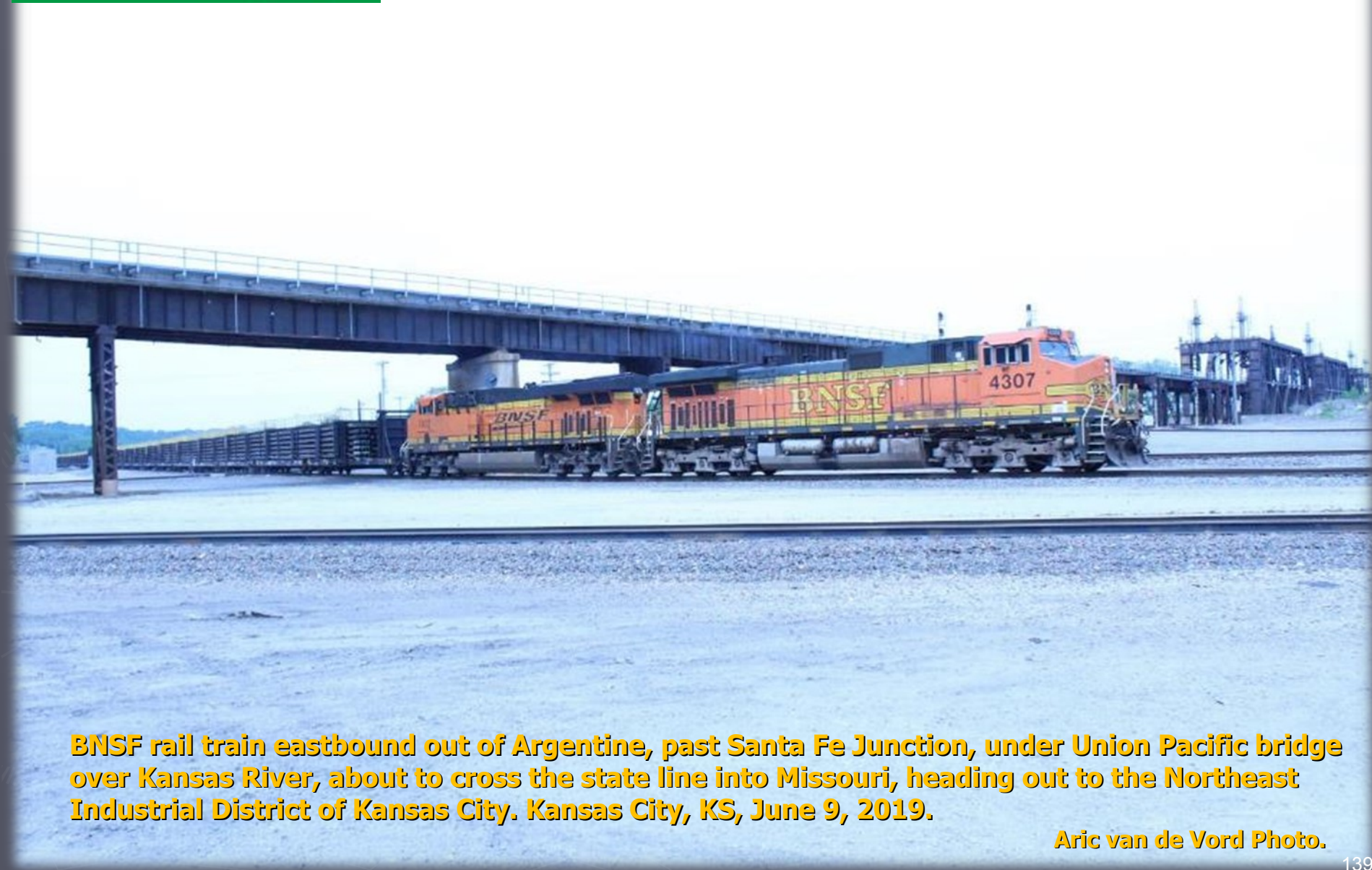
What more could you ask for?

**Hope to see you in the Vancouver, Washington
June 10-13, 2020
for the 2019 FOBNR Convention!**

Patrick Lana, MNRR

2019 Convention

Bonus Shots by Aric Van de Vord
taken after the convention



BNSF rail train eastbound out of Argentine, past Santa Fe Junction, under Union Pacific bridge over Kansas River, about to cross the state line into Missouri, heading out to the Northeast Industrial District of Kansas City. Kansas City, KS, June 9, 2019.

Aric van de Vord Photo.

2019 Convention

Bonus Shots by Aric Van de Vord
taken after the convention



Scene at Mid-America Car Inc. locomotive shops, Kansas City, MO, June 9, 2019.

Aric Van de Vord Photo.

2019 Convention

Bonus Shots by Aric Van de Vord
taken after the convention



Westbound auto racks on the Marceline Sub (BNSF transcon), Atherton, MO, June 9, 2019.

Aric Van de Vord Photo.

2019 Convention

Bonus Shots by Aric Van de Vord
taken after the convention



Westbound stack train on the Marceline Sub (BNSF transcon), going by the old sanding tower (round) and coaling tower (taller), Marceline, MO, June 9, 2019.

2019 Convention

Bonus Shots by Aric Van de Vord
taken after the convention

Above: Westbound wind turbine train on the Marceline Sub (BNSF transcon), going by the Marceline depot (now Walt Disney Hometown Museum), Marceline, MO, June 9, 2019.

Below: Disneyland R.R. #2546 at city park in Marceline, MO, June 9, 2019.

2546
DISNEYLAND R.R.

2019 Convention

Bonus Shots by Aric Van de Vord
taken after the convention



Above: Eastbound BNSF stack train passing city park in Edgerton, just south of Logistics Park Kansas City on Emporia Sub (BNSF transcon) Edgerton, KS, June 10, 2019.

Below: Minutes later, another eastbound BNSF stack train passing city park in Edgerton.



2019 Convention

Bonus Shots by Aric Van de Vord
taken after the convention



ITSX #6253 & #7914 local switchers dedicated to Logistics Park Kansas City (LPKC), at east end, Edgerton, KS, June 10, 2019.