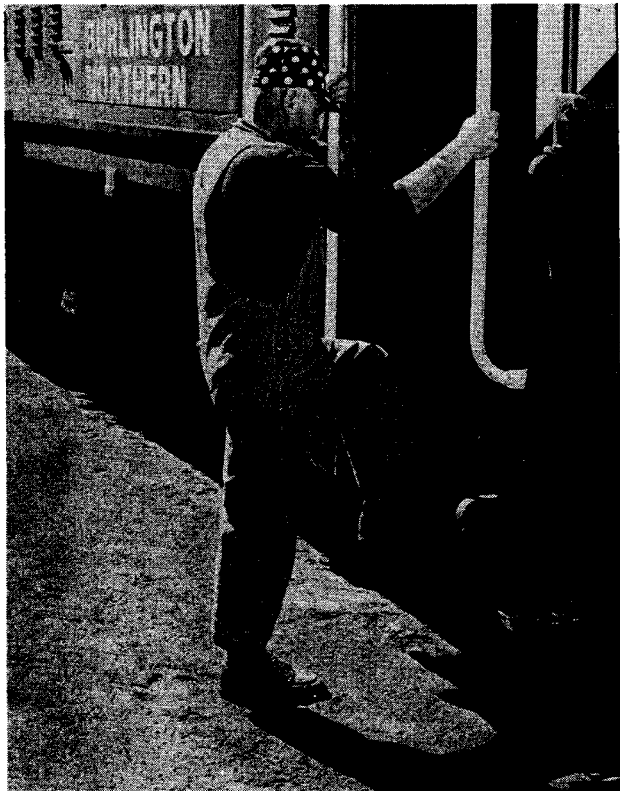


**BE SAFE**  
**Now...**



**WHEN GETTING OFF STANDING  
EQUIPMENT—HANG ONTO  
HAND HOLD UNTIL YOUR  
FOOT IS FIRMLY ON THE  
GROUND.**

**BURLINGTON  
NORTHERN  
INC.**

**PORTLAND  
REGION**

**TIME  
TABLE  
6**

**To be used in conjunction with  
Special Instructions currently in effect**

**IN EFFECT AT 12:01 A.M.  
Pacific Standard Time**

**Sunday, June 11, 1972**

**Including National Railroad Passenger Corporation (NRPC) Trains**

**Asst. Vice President  
Transportation  
R. G. JOHNSON**

**Asst. Vice President  
Operations  
J. W. WICKS**

**Superintendent  
R. O. HAMMERSTROM**

Rule 6(A) Signal	Length of Siding in feet	Station Numbers	FIRST CLASS	Mile Post Location	Distance from Cheney	1st Subdivn MAIN LINE STATIONS Telegraph Offices and Calls		FIRST CLASS
			7 NRPC Daily			8 NRPC Daily		
CJTY	5,711	63014	2.20 AM	16.6	0.0	CY	CHENEY	
P	4,558	63019	2.25	21.5	4.9		BABB	
P	6,289	63028	2.34	31.0	14.4		FISHTRAP	
P	6,373	63039	2.44	41.3	24.7		SPRAGUE	
P	6,277	63048	2.54	51.1	34.5		KEYSTONE	
P	2,535	63054	2.59	56.7	40.1		TOKIO	
PQYC	5,658	63062	3.08	64.9	48.3	RV	RITZVILLE	
P	6,326	63072	3.17	74.3	57.7		PAHA	
PWO	6,441	63079	3.25	82.0	65.4	LD	LIND	
P	5,753	63087	3.34	89.9	73.3		PROVIDENCE	
P	2,619	63090	3.40	93.0	76.4		BEATRICE	
P	5,763	63095	3.46	97.9	81.3		CUNNINGHAM	
CJQWY	W4,820 E5,097	63108	4.01	110.2	93.6	CN	CONNELL	
P	2,576	63113	4.07	115.5	98.9		CACTUS	
JPR	6,784	63117	4.11	119.7	103.1		MESA	
P	2,281	63126	4.19	128.4	111.8		ELTOPIA	
P	4,824	63131	4.24	133.4	116.8		SAGEMOOR	
P	6,231	63135	4.29	138.0	121.4		GLADE	
JBCKQR FTWYZ		12143	<sup>s</sup> 4.40 5.00	145.6	129.0	PA RN	PASCO	A 8:07 PM
J		12146	5.03	1.7	130.7		SPAS JCT.	7.55
OPY	4,324	12147	5.05	2.8	131.8	K	KENNEWICK	7.52
P	6,207	13007	5.11	7.3	136.3		VISTA	7.46
P	6,217	13017	5.21	16.8	145.8		BADGER	7.35
P	6,776	13024	5.28	23.6	152.6		KIONA	7.25
JPRTY	9,567	13034	5.39	34.4	162.8		GIBBON	7.16
PYC	E5,186 W3,549	13040	5.47	40.0	169.0	RS	PROSSER	7.08
P	6,204	13046	5.53	45.5	174.5		BYRON	7.03
P	E3,540 W2,523	13052	5.59	52.0	181.0		MABTON	6.57
P	6,118	13060	6.07	60.4	189.4		SATUS	6.50
QBKPJ CWYR	E7,171 W6,311	13070	6.18	70.9	199.9	TN	TOPPENISH	6.40
PYC	E5,138 W4,750	13078	6.26	78.3	207.3	WA	WAPATO	6.32
PRJ	3,757	13082	6.31	82.7	211.7		PARKER	6.28
P	9,117	13086	6.34	86.3	215.3		UNION GAP	6.24
BCKQRT WYZF		13089	A 6.40 AM	90.0	219.0	YA	YAKIMA	<sup>s</sup> 6.20 6.10 PM

ABS  
Rule 261-264  
ABS

**EXCEPT IN RULE 261 TERRITORY WHEN IN SERVICE, EASTWARD TRAINS ARE SUPERIOR TO WESTWARD TRAINS OF THE SAME CLASS. DOUBLE TRACK BETWEEN PASCO AND COLUMBIA RIVER BRIDGE.**

Northern Pacific Ry. signal aspects as contained in the 1967 edition Consolidated Code of Operating Rules are in effect on this Sub-division.

BN Radio Channel No. 1 in service on this Subdivision.

Rule 6(A) Signa	Length of Siding in feet	Station Numbers	Mile Post Location	Distance from Pasco	2nd Subdivn MAIN LINE STATIONS Telegraph Offices and Calls
J1		12146	229.7	1.6	SP&S JCT. } Rule 261-264
P	8,031	12147	228.5	2.8	KENNEWICK
QPC	3,632	12151	223.9	7.4	FN FINLEY
P	7,136	12159	215.8	15.5	YELLEPIT
P	7,135	12172	203.3	28.0	BERRIAN
QPO	7,181	12183	192.0	39.3	MO PLYMOUTH
P	7,214	12195	179.8	51.5	PATERSON
P	7,242	12205	170.4	60.9	WHITCOMB
P	7,240	12218	157.7	73.6	McCREIDIE
QPO	7,227	12228	147.8	83.5	RE ROOSEVELT
P	7,242	12240	135.9	95.4	BATES
P	7,285	12250	125.0	106.3	TOWAL
P	7,241	12261	113.6	117.7	MARYHILL
CBFJKP QRTWYZ		12269	106.1	125.2	X WISHRAM
PY		12272	103.2	128.1	AVERY
P	6,250	12282	43.3	138.0	NORTH DALLES
QJPC	4,079	12290	85.3	146.0	YA LYLE
QPO	6,238	12299	75.9	155.4	WS BINGEN-WHITE SALMON
P	4,178	12304	70.9	160.4	HOOD
		12309	65.8	165.5	COOKS
P	6,243	12316	59.5	171.8	HOME VALLEY
QPO	11,085	12321	54.8	176.5	NS STEVENSON
P	6,244	12326	49.3	182.0	NORTH BONNEVILLE
P	9,958	12333	42.5	188.8	SKAMANIA
P	9,910	12347	28.9	202.4	WASHOUGAL
OPQ	6,634	12351	23.8	207.5	MA CAMAS
P	6,802	12355	19.8	211.5	FISHER
		12361	14.5	216.8	McLOUGHLIN
		12363	12.1	219.2	EAVAN
BCFKPQJ RTWXYZ		12365	10.0	221.3	2 Main Tracks } MX VANCOUVER

SP&S Ry. signal aspects as contained in the 1967 edition Consolidated Code of Operating Rules are in effect on this Subdivision.

BN Radio Channel No. 1 in service on this Subdivision.

Rule 6(A) Signs	Length of Siding in feet	Station Numbers	FIRST CLASS			Mile Post Location	Distance from Centralia	3rd Subdivn MAIN LINE	FIRST CLASS		
			195	11	199			STATIONS	198	14	196
			NRPC Daily	NRPC Mo-Th-Sa	NRPC Daily				Telegraph Offices and Calls	NRPC Daily	NRPC Mo-Th-Sa
CBFJKQ RTWXYZ	(2) 4,291 (1) 4,023	16085	s 7.22 PM	s 1.50 PM	s 10.23 AM	54.0	00.0	CN CENTRALIA 3.7	As 10.45 AM	As 3.10 PM	As 7.14 PM
POYRX	(2) 3,819	16090	7.28	1.57	10.29	57.7	3.7	CH CHEHALIS 1.0	10.39	3.04	7.09
PTXYJ		16091				58.7	4.7	CHEHALIS JCT. 0.3			
PX	(2) 3,766 (1) 5,145	16097	7.38	2.06	10.39	65.0	11.0	NAPAVINE 0.3	10.29	2.55	6.59
OPX	(1) 3,152	16104	7.44	2.12	10.45	71.3	17.3	WI WINLOCK 0.4	10.23	2.47	6.52
PX	(2) 4,999 (1) 5,064	16111	7.50	2.17	10.51	77.7	23.7	VADER 0.7	10.17	2.42	6.46
PX	(2) 5,137 (1) 4,537	16120	7.57	2.26	10.58	87.4	33.4	CASTLE ROCK 0.3	10.10	2.33	6.39
X		16126				93.7	39.7	OSTRANDER 2.1			
PX		16128				95.8	41.8	ROCKY POINT 1.5			
QGX	(1) 5,190	16130	s 8.08	s 2.40	s 11.09	97.3	43.3	KS KELSO 3.7	s 10.01	s 2.22	s 6.30
OPJTX		16134		2.45		101.1	47.0	JC LONG VIEW JCT. 0.5		2.14	
POX	(2) 2,830 (1) 3,769	16140	8.18	2.53	11.19	107.5	53.5	KA KALAMA 0.1	9.50	2.07	6.19
PX		16150	8.26	3.03	11.27	116.6	62.6	WOODLAND 0.4	9.42	1.59	6.11
OPX	(2) 4,943 (1) 4,000	16155	8.31	3.08	11.32	122.0	68.0	RG RIDGEFIELD 11.0	9.37	1.55	6.06
PXJ		16166				133.0	79.0	VANCOUVER JCT. 3.4			
CFKJRO TWXYZ	(2) 11,686	12365	s 8.51	s 3.29	s 11.52	136.4	82.4	MX VANCOUVER 1.8	s 9.21	s 1.40	s 5.50
CPIJ		12368	8.54	3.32	11.55	8.1	84.3	KD NORTH PORTLAND JCT. 1.1	9.14	1.36	5.44
YXP	(2) 3,039	12369	8.56	3.34	11.58	7.0	85.4	EAST ST. JOHNS 2.7	9.12	1.33	5.42
BCIPX JKQY		12372	8.59	3.37	12.02 PM	4.3	88.1	BR WILLBRIDGE 2.3	9.08	1.30	5.38
YX		12373	9.02	3.41	12.05	2.0	90.4	LAKE YARD 2.0	9.04	1.27	5.34
BCFOR KTWYZ		12375	A 9.15 PM	A 3.50 PM	A 12.15 PM	0.0	92.4	OW VC PORTLAND	9.00 AM	1.20 PM	5.30 PM

EXCEPT ON DOUBLE TRACK, OR CTC TERRITORY WHEN IN EFFECT, EASTWARD TRAINS ARE SUPERIOR TO WESTWARD TRAINS OF THE SAME CLASS

At Portland, between Union Station and 18th Ave. on eastward main track and 15th Ave. on westward main track, trains and engines will be governed by Portland Terminal RR. Co. rules.

Northern Pacific Ry. and SP&S Ry. signal aspects as contained in the 1967 edition Consolidated Code of Operating Rules are in effect on this Subdivision.

BN Radio Channel No. 1 in service on this Subdivision.



**6 PORTLAND DIVISION WESTWARD EASTWARD**

Rule 6(A) Signs	Length of Siding in feet	Station Numbers	Mile Post Location	Distance from Willbridge	7th Subdivn BRANCH LINE STATIONS Telegraph Offices and Calls
BIJQRYP	3,869	12372	4.3	0.0	BR WILLBRIDGE
OPY		68203	7.3	3.0	IN LINNTON
Y	4,945	68204	8.9	4.6	HARBOR SIDING
PJY		68206	10.0	5.7	UNITED JCT.
	1,440	68208	12.8	8.5	HOLBROOK
	1,653	68216	19.9	15.6	SCAPOOSE
OBPYQ	2,385	68223	27.6	23.3	H ST. HELENS
P	2,278	68227	31.3	27.0	WATERVIEW
P	1,121	68235	39.5	35.2	GOBLE
	2,595	68243	46.8	42.5	AVON
P	2,574	68252	56.1	51.8	MAYGER
OP	2,304	68258	62.2	57.9	CN CLATSKANIE
P	1,426	68267	71.1	66.8	WESTPORT
		68269	73.5	69.2	WAUNA
P	2,113	68274	78.7	74.4	CLIFTON
P	1,122	68282	86.7	82.4	KNAPPA
BKQRTPY		68296	99.7	95.4	RO ASTORIA
TY		68301	105.6	101.3	WARRENTON
		68304	108.3	104.0	CAMP CLATSOP
		68314	118.0	113.7	SEASIDE

**PORTLAND DIVISION WESTWARD EASTWARD**

Rule 6(A) Signs	Length of Siding in feet	Station Numbers	Mile Post Location	Distance from Bowers Jct.	9th Subdivn BRANCH LINE STATIONS Telegraph Offices and Calls
JPY		68707	17.1	0.0	BOWERS JCT.
PO	2,392	68712	21.9	4.8	NP NORTH PLAINS
P	1,260	68722	32.2	15.1	MANNING
P	1,095	68729	38.7	21.6	TOPHILL
P	1,536	68733	42.9	25.8	BRAUN
PRTY		68739	48.5	31.4	VERNONIA

**PORTLAND DIVISION WESTWARD EASTWARD**

Rule 6(A) Signs	Length of Siding in feet	Station Numbers	Mile Post Location	Distance from United Jct.	8th Subdivn BRANCH LINE STATIONS Telegraph Offices and Calls
PJY		68206	10.0	0.0	UNITED JCT.
		68701	11.0	1.0	BAN SPUR
P		68705	14.6	4.6	TUNNEL SPUR
JPY		68707	17.1	7.1	BOWERS JCT.
	2,191	68404	20.8	10.8	MERLE
YPJT		68405	21.5	11.5	FOREST GROVE JCT. To Forest Grove 10.6
POYQ	5,274	68409	27.0	17.0	VO BEAVERTON
JP		68411	28.1	18.1	BEBURG

**BETWEEN BEBURG AND GRETON TRAINS WILL BE GOVERNED BY SOUTHERN PACIFIC TIME TABLE AND RULES**

JP		68414	31.3	21.3	GRETON
PY	3,803	68415	32.1	22.1	TIGARD
P	1,166	68426	42.8	32.8	WILSONVILLE
P	3,664	68428	45.6	35.6	CURTIS
P	3,647	68437	54.4	44.4	WEST WOODBURN
PY	3,554	68452	68.6	58.6	BUSH
QYBPKO		68454	71.2	61.2	SA SALEM
PY	5,668	68456	72.6	62.6	MINTO
P	3,546	68468	84.6	74.6	SIDNEY
ZBRPY QTKOJF		68479	96.5	86.5	YD ALBANY YARD
PY		68481	97.8	87.8	ALBANY
		68499	116.1	106.1	TULSA
P		68507	124.2	124.2	HARRISBURG
PO		68512	128.8	128.8	JO JUNCTION CITY
BKR OQPY		68526	140.5	140.0	G EUGENE

SP&S Ry. signal aspects as contained in the 1967 edition Consolidated Code of Operating Rules are in effect on this Subdivision.

BN Radio Channel No. 1 in service on these Subdivisions.

**PORTLAND DIVISION**  
WESTWARD EASTWARD

Rule 6(A) Signs	Length of Siding in feet	Station Numbers	Mile Post Location	Distance from Centralia	10th Subdivn BRANCH LINE STATIONS Telegraph Offices and Calls
BCFJKQR TWXYZ		16085	0.0	0.0	CN CENTRALIA 2.2 BLAKESLEE JCT. } Double Track
A		67602	2.2	2.2	4.6 GRAND MOUND
	2,636	67606	6.8	6.8	2.4 ROCHESTER
	2,281	67611	10.7	10.7	4.8 GATE
JPT	3,376	67614	13.1	13.1	8.3 OAKVILLE
P	2,646	67619	33.2	17.9	7.2 PORTER
P		67627	41.5	26.2	3.1 ELMA
OBJPKTY	2,820	67633	48.7	33.4	5.2 SATSOP
	1,208	67637	51.8	36.5	9.1 MONTESANO
PY	2,638	67643	57.0	41.7	3.0 ABERDEEN JCT.
PT		67651	66.1	50.8	ABERDEEN To South Aberdeen Jct. 0.6
JPYZ		67654	69.0	53.8	

**Between Aberdeen and South Aberdeen Jct., Trains will be Governed by Union Pacific Time Table and Rules**

Rule 6(A) Signs	Length of Siding in feet	Station Numbers	Mile Post Location	Distance from Centralia	10th Subdivn BRANCH LINE STATIONS Telegraph Offices and Calls
Y		67903	2.9	57.3	COSMOPOLIS 2.9
Y		67901	2.3	54.4	SOUTH ABERDEEN JCT. 0.2
YU		67902	2.5	54.5	SOUTH ABERDEEN 11.0
Y		67913	13.5	65.5	MARKHAM
OBFBKQ TWYZR		67658	72.7	57.5	HO To Aberdeen 3.7 HOQUIAM 12.5
		67670	85.2	70.0	TULIPS 3.2
		67674	88.4	73.2	COPALIS 2.2
		67677	90.6	75.4	CARLISLE 2.1
	1,276	67678	92.7	77.5	ONSLow 3.5
		67682	96.2	81.0	ALOHA 1.7
		67684	97.9	82.7	PACIFIC BEACH 2.5
PT	1,424	67686	100.4	85.2	MOCLIPS

**DOUBLE TRACK BETWEEN ABERDEEN AND HOQUIAM RIVER DRAWBRIDGE**

**PORTLAND DIVISION**  
WESTWARD EASTWARD

Rule 6(A) Signs	Station Numbers	Mile Post Location	Distance from Albany Yard	11th Subdivn BRANCH LINE STATIONS Telegraph Offices and Calls
ZKBPYJ QTORF	68479	0.0	0.0	YD ALBANY YARD 14.5

**BETWEEN ALBANY YARD AND LEBANON TRAINS WILL BE GOVERNED BY S.P. RY. TIME TABLES AND RULES**

Rule 6(A) Signs	Station Numbers	Mile Post Location	Distance from Albany Yard	11th Subdivn BRANCH LINE STATIONS Telegraph Offices and Calls
OKPZY	68814	14.5	14.5	BA LEBANON 0.3
OPY	68816	17.2	17.2	V WELDWOOD 7.1
	68824	24.3	24.3	NARROWS 4.6
QPYO RBT	68829	28.9	28.9	SW SWEET HOME 3.0
Y	68832	31.9	31.9	FOSTER

**PORTLAND DIVISION**  
WESTWARD EASTWARD

Rule 6(A) Signs	Length of Siding in feet	Station Numbers	Mile Post Location	Distance from Yakima	12th Subdivn BRANCH LINE STATIONS Telegraph Offices and Calls
JCBFKPQ RTWYZ		13089	0.0	0.0	YA-KM YAKIMA 4.2
JY	1,276	65204	4.2	4.2	BRACE To Weikel 4.9 To Glead 2.7
		65305	4.9	9.1	WEIKEL 3.6
	2,313	65309	8.5	12.7	COWICHE 3.1
TY		65312	11.6	15.8	TIETON
		65206	6.9	6.9	GLEED 5.5
	1,248	65214	13.5	13.5	NACHES

BN Radio Channel No. 1 in service on these Subdivisions.

**PORTLAND DIVISION**  
**WESTWARD** **EASTWARD**

Rule 6(A) Signa	Station Numbers	Mile Post Location	Distance from Yakima	13th Subdivn BRANCH LINE STATIONS	
Telegraph Offices and Calls					
JCBFKP QRTWYZ	13089	0.0	0.0	YA	<b>YAKIMA</b> 8.5
	65409	8.5	8.5		<b>MOXEE CITY</b>

**PORTLAND DIVISION**  
**WESTWARD** **EASTWARD**

Rule 6(A) Signa	Length of Siding in feet	Station Numbers	Mile Post Location	Distance from Toppenish	14th Subdivn BRANCH LINE STATIONS	
Telegraph Offices and Calls						
OJPBKWYQ		13070	0.0	0.0	TN	<b>TOPPENISH</b> 9.6
P	2,135	65111	9.6	12.0		<b>HARRAH</b> 4.0
P	1,347	65114	13.6	16.0		<b>RUPPLE</b> 5.4
PT		65120	19.0	21.4		<b>WHITE SWAN</b>

**PORTLAND DIVISION**  
**WESTWARD** **EASTWARD**

Rule 6(A) Signa	Length of Siding in feet	Station Numbers	Mile Post Location	Distance from Gibbon	15th Subdivn BRANCH LINE STATIONS	
Telegraph Offices and Calls						
JPRTY	9,567	13034	34.4	0.0		<b>GIBBON</b> 11.4
PYO	3,850	65012	45.8	11.4	GW	<b>GRANDVIEW</b> 8.6
PYO	3,195	65020	54.4	20.0	SY	<b>SUNNYSIDE</b> 3.6
P	2,029	65024	58.0	23.6		<b>OUTLOOK</b> 4.6
PY	3,875	65029	62.6	28.2		<b>GRANGER</b> 6.3
PY	3,626	65034	68.9	34.5		<b>ZILLAH</b> 2.5
PYO		65037	71.4	37.0	BN	<b>BUENA</b> 7.8
			79.2	44.8		<b>U.P. CROSSING</b> 1.0
JPR		13082	80.2	45.8		<b>PARKER</b>

**PORTLAND DIVISION**  
**WESTWARD** **EASTWARD**

Rule 6(A) Signa	Length of Siding in feet	Station Numbers	Mile Post Location	Distance from Adrian	16th Subdivn BRANCH LINE STATIONS	
Telegraph Offices and Calls						
J		01983	0.0	0.0		<b>ADRIAN</b> 22.2
ORPQYB	5,310	62839	147.3	22.2	WH	<b>WHEELER</b> 7.8
RJPT		62832	155.1	30.0		<b>BASSETT JCT.</b> 12.3
	1,180	62912	12.3	42.3		<b>SCHRAG</b> 4.9
OYRBPQ	2,334	62826	160.4	47.2	XO	<b>WARDEN</b> 9.3
OYPQ	2,718	62817	169.7	56.5	BR	<b>BRUCE</b> 16.7
BCJQR WY		63108	186.4	73.2	CN	<b>CONNELL</b>

EASTWARD -  
Bassett Jct.  
to Schrag

**PORTLAND DIVISION**  
**WESTWARD** **EASTWARD**

Rule 6(A) Signa	Length of Siding in feet	Station Numbers	Mile Post Location	Distance from Fish Lake	17th Subdivn MAIN LINE STATIONS		FIRST CLASS
Telegraph Offices and Calls							8
							NRPC Daily
PJI			365.1	0.0		<b>FISH LAKE</b> 4.7	A 11:00 PM
P	4,004	12014	360.4	4.7		<b>SOUTH CHENEY</b> 6.1	10:53
P	5,817	12021	354.3	10.8		<b>MOCK</b> 11.3	10:43
P	6,241	12032	343.0	22.1		<b>RODNA</b> 8.0	10:30
QPO	E 6,652 W 4,775	12040	335.0	30.1	A	<b>LAMONT</b> 11.6	10:20
P	6,244	12051	323.4	41.7		<b>MACALL</b> 12.6	10:11
P	6,292	12064	310.8	54.3		<b>BENGE</b> 11.8	9:59
P	6,276	12076	299.2	65.9		<b>HOOPER</b> 8.2	9:47
QPO	E 6,459 W 3,632	12084	291.0	74.1	WA	<b>WASHTUCNA</b> 13.4	9:37
P	6,230	12097	277.6	87.5		<b>KAHLOTUS</b> 9.3	9:24
P	4,462	12107	268.3	96.8		<b>FARRINGTON</b> 5.7	9:13
P	5,618	12112	262.6	102.5		<b>BURR</b> 6.2	9:07
QPO	4,083	12119	256.4	108.7	SR	<b>SNAKE RIVER</b> 2.7	9:01
P	6,238	12121	253.7	111.4		<b>VOTAW</b> 9.2	8:58
P	6,266	12130	244.5	120.6		<b>LEVY</b> 6.7	8:48
P	3,543	12137	237.8	127.3		<b>MARTINDALE</b> 4.6	8:40
IJP		12142	233.2	131.9		<b>AINSWORTH JCT.</b> 2.8	8:35
PZXTYW RBCKFIQ		12143	231.3	134.7	RN PA	<b>PASCO</b>	8:25 PM

ABS

Rule  
261-264

SP&S Ry. signal aspects as contained in the 1967 edition Consolidated Code of Operating Rules are in effect on this Subdivision.

BN Radio Channel No. 1 in service on these Subdivisions.



**PORTLAND DIVISION**  
**WESTWARD EASTWARD**

Rule 6(A) Signa	Length of Siding in feet	Station Numbers	Mile Post Location	Distance from Ainsworth Jct.	18th Subdivn BRANCH LINE STATIONS Telegraph Offices and Calls
JP		12142	2.7	0.0	Rule 261-264 AINSWORTH JCT. } 1.2 BURBANK } 2.1 VILLARD JCT. } 6.3 } ABS
P		64104	4.0	1.2	
JP	3,538	64106	5.7	3.3	

**BETWEEN VILLARD JCT., AND ATTALIA, TRAINS WILL BE GOVERNED BY CTC OPERATING RULES AND UNION PACIFIC RAILROAD, BLOCK AND INTERLOCKING SIGNAL INDICATIONS.**

Rule 6(A) Signa	Length of Siding in feet	Station Numbers	Mile Post Location	Distance from Ainsworth Jct.	18th Subdivn BRANCH LINE STATIONS Telegraph Offices and Calls
POJRTY	3,538	64112	12.0	9.6	A ATTALIA 20.5
PJTY	2,102	64221	33.2	30.1	EUREKA 22.1
	1,761	64322	55.4	52.2	DRY CREEK 8.5
BKOPRWYZ		64331	63.8	60.7	F WALLA WALLA 7.1
		64337	70.3	67.8	SAPOLIL 4.7
	1,145	64342	75.0	72.5	DIXIE 13.2
		64355	88.2	85.7	WAITSBURG 1.8
JY		64357	90.0	87.5	WAITSBURG JCT. 0.8
Y		64358	90.8	88.3	HUNTSVILLE 7.7
ORY		64365	97.9	96.0	DF DAYTON

**TRAINS MOVING TO RIPARIA FROM AINSWORTH JCT. WILL OPERATE ON THE UNION PACIFIC R.R. BETWEEN ATTALIA-WALLULA AND RIPARIA, A DISTANCE OF 64.7 MILES AND WILL BE GOVERNED BY UNION PACIFIC TIME TABLE AND RULES.**

**PORTLAND DIVISION** **9**  
**WESTWARD EASTWARD**

Rule 6(A) Signa	Length of Siding in feet	Station Numbers	Mile Post Location	Distance from Attalia	19th Subdivn BRANCH LINE STATIONS Telegraph Offices and Calls
RJPTYO	3,538	64112	0.0	0.0	A ATTALIA 0.9
PRYO	1,538	64113	0.8	0.9	JN WALLULA 1.8
JPY		64116	0.4	2.7	WALLULA JCT. 3.6

**BETWEEN WALLULA AND ZANGAR JCT. TRAINS WILL BE GOVERNED BY CTC OPERATING RULES AND UNION PACIFIC RAILROAD, BLOCK AND INTERLOCKING SIGNAL INDICATIONS.**

Rule 6(A) Signa	Length of Siding in feet	Station Numbers	Mile Post Location	Distance from Attalia	19th Subdivn BRANCH LINE STATIONS Telegraph Offices and Calls
J		64119	4.2	6.3	ZANGAR JCT. 15.4
JPT	1,029	64134	19.5	21.7	To Apex 1.0 SMELTZ 14.5
TYO		64614	14.5	36.2	CV ATHENA 1.0
		64135	20.5	22.7	APEX 2.9
O	1,277	64138	23.4	25.6	HX HELIX 16.1
P		64153	39.5	41.7	U.P. CONNECTION

**BETWEEN UP CONNECTION, AND 1500 FEET WEST OF BN YARD CONNECTION ON UP, OREGON DIVISION, TRAINS WILL USE MAIN TRACK OF UP GOVERNED BY UP SPECIAL INSTRUCTIONS, AND RULES AND INSTRUCTIONS GOVERNING THE OPERATION OF TRAINS BY CENTRALIZED TRAFFIC CONTROL SYSTEM.**

Rule 6(A) Signa	Length of Siding in feet	Station Numbers	Mile Post Location	Distance from Attalia	19th Subdivn BRANCH LINE STATIONS Telegraph Offices and Calls
RTYO		64155	40.5	43.8	ND FENDLETON 2.1

**PORTLAND DIVISION**  
**WESTWARD EASTWARD**

Rule 6(A) Signa	Length of Siding in feet	Station Numbers	Mile Post Location	Distance from Eureka	20th Subdivn BRANCH LINE STATIONS Telegraph Offices and Calls
JPTY		64221	0.0	0.0	EUREKA 11.5
		64233	11.5	11.5	CLYDE 8.3
	1,859	64241	19.4	19.8	PLEASANT VIEW

**PORTLAND DIVISION**  
**WESTWARD EASTWARD**

Rule 6(A) Signa	Length of Siding in feet	Station Number	Mile Post Location	Distance from Mesa	21st Subdivn BRANCH LINE STATIONS Telegraph Offices and Calls
PR	6,784	63117	0.0	0.0	MESA 8.5
	3,382	63708	8.5	8.5	BASIN CITY 9.0
	2,535	63717	17.5	17.5	SAGEHILL 3.8
			21.3	21.3	END OF TRACK

BN Radio Channel No. 1 in service on these Subdivisions.

PORTLAND DIVISION  
WESTWARD EASTWARD

Rule 6(A) Signs	Length of Siding in feet	Station Numbers	Mile Post Location	Distance from Bangor	22nd Subdivn BRANCH LINE STATIONS Telegraph Offices and Calls
TY		67768	43.2	0.0	BANGOR 3.4
	2,618	67765	39.7	3.4	SILVERDALE 2.5
J	2,855	67762	37.3	5.9	N. A. D. JCT. To Bremerton Jct. 5.3
BROTY		67805	4.6	6.6	BM BREMERTON 4.6
J	2,924	67757	32.0	11.2	BREMERTON JCT. 3.1
	2,623	67754	28.8	14.3	BELFAIR 12.6
	2,622	67741	16.3	26.9	ALLYN 13.1
Y	2,627	67728	3.2	40.0	BAYSHORE 3.2
OPRYTJ		67725	25.2	43.2	NS SHELTON 10.6
	2,710	67715	14.6	53.8	MARMAC 4.5
	1,029	67710	10.1	58.3	STIMSON 2.6
		67708		60.9	McCLEARY JCT. To Whites 3.5
JTY		67707	7.5	61.6	McCLEARY 3.5
		67704	4.0	64.4	WHITES 4.0
JPTYO		67633	0.0	68.4	EF ELMA

EASTWARD—  
Elms to Bangor, McCleary Jct. to McCleary, and Bremerton Jct. to Bremerton.

The line between Shelton-Bangor-Bremerton is owned by the United States Government and its maintenance and operation by the BN Inc. is covered by contract with the Government.

PORTLAND DIVISION  
WESTWARD EASTWARD

Rule 6(A) Signs	Length of Siding in feet	Station Numbers	Mile Post Location	Distance from Chehalis Jct.	23rd Subdivn BRANCH LINE STATIONS Telegraph Offices and Calls
JPT		18091	0.0	0.0	CHEHALIS JCT. 4.7
		68005	4.7	4.7	ADNA 1.9
RY		68007	6.6	6.6	MILLBURN 3.4
	1,388	68010	10.0	10.0	CERES 2.1
P		68012	12.2	12.1	MESKILL PIT 4.1
	2,917	68016	15.8	16.2	DRYAD 6.0
OYR	2,969	68022	22.3	22.2	PL PE ELL 6.5
	2,335	68029	28.7	28.7	PLUVIUS 6.5
		68035	35.3	35.2	FRANCES 2.7
		68038	38.0	37.9	LEBAM 12.6
		68051	50.5	50.5	WILLAPA 2.5
ORY	3,138	68053	53.0	53.0	ND RAYMOND 3.6
T		68057	56.5	56.6	SOUTH BEND

BN Radio Channel No. 1 in service on these Subdivisions.

INDUSTRIAL TRACKS AND OTHER TRACKS NOT SHOWN AS STATIONS ON TIME TABLE

Name	Location	Capacity Cars	Switch Opens	Name	Location	Capacity Cars	Switch Opens
<b>First Subdivision</b>				<b>Seventh Subdivision—Cont.</b>			
63045 Pifer.....	3.4 miles east of Keystone.....	19		68255 Quincy Spur.....	3.5 miles west of Mayger.....	13	West
63098 Hatton.....	9.1 miles east of Connell.....	43	Both	68262 Marshland.....	4.4 miles west of Clatskanie.....	20	West
63115 Mesa Pit.....	2.0 miles west of Cactus.....	40		68273 Bradwood Loading Track.....	1.6 miles east of Clifton.....	13	Both
63119 Edwards.....	2.4 miles west of Mesa.....	58		68279 Brownsmead.....	3.2 miles east of Knappa.....	16	East
13066 Alfalfa.....	4.9 miles east of Toppenish.....	91	Both	68286 Svansen.....	3.7 miles west of Knappa.....	2	West
<b>Second Subdivision</b>				68292 Mill Creek Naval.....	3.6 miles east of Astoria.....	19	East
12154 Kerley Chemical Lead Track.....	0.8 mile west of Finley.....	7	East	68293 Tongue Point.....	3.0 miles west of Astoria.....	18	East
12154 Kerley Chemical Corporation.....	3.6 miles west of Finley.....	5	West	68312 Bayview Transit Mix.....	1.9 miles east of Seaside.....	4	East
12181 North McNary.....	3.0 miles east of Plymouth.....	12	East	68351 Warrenton Clay.....	1.1 miles east of Flavel.....	53	West
12200 Ballast Track.....	3.9 miles east of Whitcomb.....	37	Both	68352 Flavel.....	1.8 miles west of Warrenton.....	10	East
12213 Alderdale.....	4.6 miles east of McCredie.....	18	West	68354 Hammond.....	2.7 miles west of Warrenton.....	4	East
12234 Sundale.....	4.5 miles east of Bates.....	17	West	68353 Bioproducts.....	0.3 mile east of Hammond.....	4	West
12244 Goodnoe.....	5.2 miles west of Bates.....	5	West	<b>Eighth Subdivision</b>			
12254 Harvey Alum. Co. Cliffs.....	5.0 miles east of Maryhill.....	33	West	68601 Orengo.....	0.8 miles west of Forest Grove Jct.....	12	Both
12255 Cliffs.....	3.7 miles east of North Dalles.....	50	East	68603 Sewell.....	2.9 miles west of Forest Grove Jct.....	6	East
12278 Dow Chem. Co.....	3.3 miles east of North Dalles.....	26	West	68605 Hillsboro.....	4.5 miles west of Forest Grove Jct.....	39	Both
12279 Dallesport Setout.....	0.9 mile west of Bingen-White Salmon.....	11	East	68608 Cornelius.....	7.9 miles west of Forest Grove Jct.....	11	Both
12300 Underwood Fruit & Whse. Co.....	1.3 miles west of Underwood.....	5	East	68611 Forest Grove.....	10.6 miles west of Forest Grove Jct.....	63	Both
12304 Broughton Lumber Co.....	5.1 miles west Hood.....	15	West	68402 Bendemeer.....	2.0 miles east of Merle.....	2	East
12309 Cooks.....	1.6 miles west of Stevenson.....	69	East	68409 Beaverton Old Siding.....	1.4 miles east of Beburg.....	5	Both
12322 Stevenson Plywood Co.....	1.6 miles west of Stevenson.....	57	West	68410 General Motors.....	2.1 miles east of Beburg.....	57	East
12322 Hegewald Timber Co.....	4.3 miles west of Skarunia.....	12	East	68417 Durham.....	2.3 miles west of Tigard.....	5	East
12337 Prindle.....	4.0 miles east of Washougal.....	121	Both	68417 U & I Sugar.....	2.3 miles west of Tigard.....	11	East
12343 Mt. Pleasant.....	2.0 miles west of Washougal.....	9	East	68419 Tualatin.....	4.0 miles west of Tigard.....	8	Both
12349 Nu Lam Wood Products.....	2.0 miles east of Camas.....	15	East	68420 Albertain-Oregon Culvert Co.....	5.4 miles west of Tigard.....	4	West
12350 Camas-Washougal Port Dock.....				68422 Tonquin.....	6.9 miles west of Tigard.....	17	Both
<b>Third Subdivision</b>				68423 Mulloy.....	5.2 miles east of Curtis.....	6	East
16106 Millman Lumber Co.....	1.8 miles west of Winlock.....	5	West	68426 Wilsonville.....	2.4 miles east of Curtis.....	24	Both
16114 Olequa.....	2.7 miles west of Vader.....	26	West	68432 Donald.....	3.7 miles west of Curtis.....	21	Both
16142 North Pacific Grain Growers.....	1.5 miles west of Kalama.....	38	East	68436 Loganville.....	0.9 mile east of West Woodburn.....	4	West
68152 Ampere.....	1.1 miles west of Rye.....	20	East	68440 St. Louis.....	2.9 miles west of West Woodburn.....	8	East
<b>Fourth Subdivision</b>				68444 Waconda.....	6.8 miles west of West Woodburn.....	6	East
14047 Sherar.....	7.3 miles east of Maupin.....	34	East	68446 Hopmere.....	5.5 miles east of Bush.....	32	Both
14068 Dant.....	3.7 miles west of Nena.....	3	East	68447 Quinaby.....	4.5 miles east of Bush.....	7	Both
14108 Agency.....	2.5 miles west of Madras.....	6	West	68449 Chemawa B. P. A.....	2.7 miles east of Bush.....	36	West
<b>Fifth Subdivision</b>				68458 Roberts.....	3.1 miles west of Minto.....	21	East
14190 Beal.....	6.3 miles west of Lapine.....	27	West	68463 Orville.....	4.9 miles east of Sidney.....	14	Both
14300 Henley.....	3.4 miles west of So. Klam.....	25	Both	68471 Talbot.....	3.1 miles west of Sidney.....	15	Both
14303 Dehlinger.....	6.6 miles west of So. Klam.....	24	Both	68474 Dever.....	6.0 miles west of Sidney.....	14	West
14312 Stonebridge.....	1.7 miles west of Merrill.....	28	Both	68481 Albany.....	1.3 miles west of Albany Yard.....	Yard	
14316 Adams Point.....	5.3 miles west of Merrill.....	46	Both	68485 Pirtle.....	5.2 miles west of Albany Yard.....	6	East
14325 Dalton.....	4.6 miles west of Malin.....	60	Both	68487 Ehlen-Van Waters and Rogers.....	7.5 miles west of Albany Yard.....	10	East
14332 Hannchen.....	4.7 miles west of Stronghold.....	21	West	68489 Verdure.....	9.9 miles west of Albany Yard.....	4	West
14333 Kandra.....	5.4 miles west of Stronghold.....	42	Both	68494 Fayetteville.....	14.6 miles west of Albany Yard.....	12	East
14346 Tioneeta.....	6.0 miles west of Mammoth.....	39	Both	68496 Munson.....	15.4 miles east of Junction City.....	1	East
<b>Sixth Subdivision</b>				68497 Potter.....	14.9 miles east of Junction City.....	3	East
64735 Centerville.....	6.3 miles west of Goldendale.....	18	Both	68499 Tulsa.....	12.6 miles east of Junction City.....	5	Both
64730 Warwick.....	11.4 miles west of Goldendale.....	16	Both	68500 American.....	11.7 miles east of Junction City.....	29	West
64723 Swale.....	13.6 miles west of Goldendale.....	5	East	68501 Miller Seed Co.....	10.4 miles east of Junction City.....	3	West
64717 Wabkiakus.....	3.5 miles east of Klickitat.....	13	Both	68504 Cartney.....	7.3 miles east of Junction City.....	6	East
64716 Klickitat Springs.....	2.4 miles east of Klickitat.....	5	Both	68507 Harrisburg.....	4.5 miles east of Junction City.....	52	Both
64710 Pitt.....	3.7 miles west of Klickitat.....	6	Both	68516 Meadow View.....	4.7 miles east of Junction City.....	5	East
64702 Doubling Spur.....	1.6 miles east of Lyle.....	6	East	68518 Awbrey.....	5.0 miles west of Eugene.....	8	Both
<b>Seventh Subdivision</b>				68519 Enid.....	3.9 miles east of Eugene.....	55	Both
68201 Willbridge Siding.....	0.8 mile west of Willbridge.....	77	Both	68832 Foster.....	3.1 miles west of Sweet Home.....		
68202 Gasco.....	1.3 miles west of Willbridge.....	25	West	<b>Ninth Subdivision</b>			
68202 Gasco.....	1.3 miles west of Willbridge.....	23	West	68713 Timco.....	1.4 miles west of North Plains.....	23	Both
68202 Gasco.....	1.3 miles west of Willbridge.....	15	East	68716 Christie.....	3.6 miles west of North Plains.....	10	East
68202 Portland Tug and Barge.....	1.5 miles west of Willbridge.....	13	East	68718 Banks—Kelley, Farquahar & Co.....	4.2 miles east of Manning.....	4	West
68205 Harbor Track.....	0.2 mile east of United Jct.....	15	East	68718 Banks—Hudson House, Inc.....	4.2 miles east of Manning.....	4	West
68222 Crown Zellerbach Corp.....	1.5 miles east of St. Helens.....	53	East	68718 Banks—Banks Lumber Co.....	4.2 miles east of Manning.....	6	East
68226 Crown Zellerbach Corp. No. 3.....	0.8 mile east of Waterview.....	42	West	68718 Banks—V.S.P. & SS. RR., Inc.....	4.2 miles east of Manning.....	10	East
68226 Crown Zellerbach Tracks 1 & 2.....	0.8 mile east of Waterview.....	51	Both	68730 Haydite.....	1.5 miles west of Tophill.....	10	Both
68237 Trojan.....	1.3 miles west of Goble.....	10	East				
68238 Prescott.....	2.5 miles west of Goble.....	2	East				
68244 Goodat Crushed Rock.....	0.5 mile west of Avon.....	9	East				
68254 Port Westward.....	2.2 miles west of Mayger.....						

INDUSTRIAL TRACKS AND OTHER TRACKS NOT SHOWN AS STATIONS ON TIME TABLE

Name	Location	Capacity Cars	Switch Opens	Name	Location	Capacity Cars	Switch Opens
<b>Eleventh Subdivision</b>				<b>Seventeenth Subdivision</b>			
68815	Lebanon (O. E. Siding)	8	Both	12140	East Pasco Std. Oil	11	West
68818	Lebanon Lumber Co.	4	East	12140	East Pasco Permante Cement Co.	16	West
68818	Pacific Northwest Moulding Co.	2	East	12140	East Pasco Tidewater Shaver	15	West
68820	Waterloo	3	East	12140	East Pasco Shell Chem. Corp.	6	West
68821	Kanshawa-Bauman Sales, Inc.	6	East	12140	East Pasco Storage No. 1	18	West
68821	Bauman Lumber Co.	13	East	12140	East Pasco Storage No. 2	18	West
68821	M. B. Christenson	7	East	12125	Redd	22	West
68822	G&G Lumber Co.	2	West	12120	Snake River Pit	51	West
68822	Nye	7	East	12109	Burr Canyon	4	West
68824	Kell Lumber Co.	3	East	12094	Harder	7	East
68824	Williamette Fibre & Chipboard Co.	5	East	12090	Sperry	40	East
68825	Benjo Milling Co.	5	East	12083	Washtucna Industry	142	East
68825	J. H. Baxter Company	5	East	12026	Amber	16	West
68826	Mid Plywood Propane	3	East	<b>Eighteenth Subdivision</b>			
68826	Mid Plywood, Inc.	8	Both	64207	LeGrow	6	Both
<b>Twelfth Subdivision</b>				64209	Slater	27	Both
65310	Holtzinger	9	East	64213	Welland	8	Both
65311	Tasker	9	Both	64216	Adkins	28	Both
65203	Fruitvale	9	Both	64218	Hatch	16	Both
65208	Eschbach	10	Both	64306	Lamar	28	Both
65211	Bonlow	3	East	64307	Harsha	9	Both
65210	Rowe	5	East	64310	Paddock	11	Both
65202	Jack Frost Fruit	9	East	64311	Climax	16	Both
65201	Blake, Moffit & Towne	8	West	64316	Rulo	27	Both
<b>Thirteenth Subdivision</b>				64319	Thiel	19	Both
65402	National Can	9	West	64324	Sudbury	10	East
65403	Terrace Heights	7	Both	64326	Pedigo	13	Both
65404	Valley Junk	3	East	64329	Penitentiary	1	East
65406	Birchfield	9	Both	64334	Walair	70	East
<b>Fourteenth Subdivision</b>				64335	Craik	2	East
65103	Yethonat	11	Both	64338	Buroker	18	Both
65106	Ashue	15	Both	64340	Gilliam	8	Both
65108	Venner	10	Both	64343	Eastman	10	Both
65109	Farron	45	Both	64346	Minnick	19	Both
65113	Brownstown	29	Both	64352	Coppei	34	Both
<b>Fifteenth Subdivision</b>				64359	Varna	2	West
65003	Whitstran	53	Both	64360	Dumas	5	East
65006	North Prosser	63	Both	64361	Long	14	Both
65010	Aprioot	25	Both	<b>Nineteenth Subdivision</b>			
65016	Lichty	10	Both	64125	Ring	26	Both
65017	Sunny Roza	4	East	64129	Van Sytle	28	Both
65018	Sugar Plant No. 2	31	West	64132	Stanton	34	Both
65019	East Way Spur No. 1	10	East	64604	Duroc	19	Both
65027	Nass	28	Both	64606	Wayland	19	Both
65034	Chenauer	5	East	64609	Waterman	27	Both
65035	Keck	5	West	64142	Myrick	38	Both
65039	Flint	6	East	64146	McCormmach	12	Both
65040	Sawyer	58	Both	64147	Fulton	28	Both
65042	Donald	14	Both	<b>Twentieth Subdivision</b>			
<b>Sixteenth Subdivision</b>				64223	Babcock	15	Both
62810	Shano	17	West	64226	Lee	49	Both
62831	Ritell	30	Both	64229	Elwood	28	Both
62845	Banks	20	Both	64231	Harvey	7	Both
62844	Mitchell	11	West	64234	Pickard	14	Both
62836	Atwood	8	West	64236	Reser	16	Both
62835	Raugust	23	Both	64238	Tomkins	9	East
62905	Barham	23	West	<b>Twenty-second Subdivision</b>			
62907	Schaefer	6	West	67761	Wesco	5	East
62820	Simenson	12	West	Pro-Gas	4	West	
62813	Koren	8	West	Hunt Fuel	2	East	
62806	Frischnocht	37	Both	67724	Reed Shingle	6	East
62905	Schlomer	13	West	67724	Olympia Plywood	10	West
				67721	Cole Road Bldrs. Supply	3	East
				67720	Doubling Spur	12	East

**CHIEF MEDICAL OFFICERS**

- \*Dr. Alexander McEwan, Chief Medical Officer...St. Paul, Minn.
- \*Dr. Abbott Skinner, Asst. Chief Medical Officer...St. Paul, Minn.
- \*Dr. H. W. Hammatt, Asst. Chief Medical Officer.... Chicago, Ill.
- \*Dr. Hugo F. Schroeckenstein,  
Assistant to Chief Medical Officer.....St. Paul, Minn.
- \*Dr. Merl L. Margason, Medical Director..... Portland

**LOCAL SURGEONS**

BN Clinic, Second Floor, N. P. Freight House, Seattle.

Hours—9:00 AM to 11:59 AM Daily, except Saturdays and Sundays

- |   |  |
|---|--|
| *The Portland Clinic..... Portland                      | Dr. Otto George..... Clatskanie        |
| *Dr. Allen L. Mundal..... Portland                      | *Medical Dental Center..... Astoria    |
| *Dr. Carl B. Cone..... Vancouver                        | Dr. R. W. Parcher..... Seaside         |
| Dr. Henry M. Wiswall..... Vancouver                     | Dr. F. J. Kaboiseman..... Hillsboro    |
| *Dr. G. H. Johnson..... Vancouver                       | Dr. Gerald B. Smith..... Woodburn      |
| *Dr. J. A. Wals..... Vancouver                          | *Dr. R. E. Purvine..... Salem          |
| Dr. G. F. Parks..... Centralia                          | Dr. H. Dan Moore..... Albany           |
| *Dr. Edward Taylor..... Centralia                       | Dr. L. L. Bassinger..... Albany        |
| *Dr. F. Davis..... Kelso                                | Dr. Charles H. Nelson..... Albany      |
| *Dr. Ransom L. Smith..... Longview                      | Dr. Ralph E. Herron..... Lebanon       |
| *Dr. C. J. Hoffman..... Woodland                        | *Dr. Robt. Langmack..... Sweet Home    |
| *Dr. H. L. Skinner..... Battle Ground<br>and Ridgefield | Dr. Harold B. Dowling..... Sweet Home  |
| *Dr. M. C. Lindel..... Montesano                        | *Dr. W. H. Chapman..... Eugene         |
| *Dr. R. E. Fredericksen..... Aberdeen                   | *Dr. W. A. Bartlett..... Klamath Falls |
| *Dr. W. H. Schumacher..... Shelton                      | *Dr. J. A. Rogers..... Klamath Falls   |
| *Dr. H. A. Barner..... Bremerton                        | Dr. C. J. Rademacher..... Bend         |
| Dr. W. S. Shepherd..... Camas                           | *Dr. A. O. Meier..... Bieber           |
| *Dr. K. F. Stefan..... Washougal                        | Dr. G. V. Axford..... Pasco            |
| Dr. Wayne M. Henkle..... Bingen-<br>White Salmon        | Dr. Joseph L. Greenwell..... Pasco     |
| *Dr. H. W. Holderby..... Goldendale                     | Dr. A. M. Gregson..... Pasco           |
| *Dr. Elsie Tupper..... Goldendale                       | Dr. J. M. Pierson..... Kennewick       |
| *The Dalles Clinic..... The Dalles                      | Dr. R. F. Hisey..... Granger           |
| *Dr. James R. Schlichting..... The Dalles               | Dr. R. V. Axford..... Prosser          |
| *Bend Memorial Clinic..... Bend                         | Dr. Kirk Brown..... Mabton             |
| Dr. Samuel Toews..... Redmond                           | Dr. M. G. Anderson..... Yakima         |
| Dr. Robert L. Unger..... Redmond                        | Dr. E. F. Coleman..... Yakima          |
| Dr. Roger D. Stack..... Redmond                         | Dr. N. W. Moss..... Yakima             |
| Dr. T. J. Hicks..... Madras                             | Dr. W. A. Gamon..... Cheney            |
| Dr. James R. Schlichting..... Maupin                    | Dr. G. S. McConnell..... Ritzville     |
| Dr. O. L. Zeschin..... St. Helens                       | Dr. E. S. Morgan..... Pendleton        |
| Dr. E. R. Starr..... Rainier                            | Dr. J. F. Bittner..... Pendleton       |
|   | Dr. S. R. Hevel..... Waitsburg         |
|   | Wapato Medical Clinic..... Wapato      |

**SPECIALISTS**

- \*Dr. Canfield Beattie, Eye, Ear, Nose and Throat..... Portland
- Dr. J. H. Gill, Orthopedic Surgeon..... Vancouver
- Dr. Samuel Osborn, Orthopedic Surgeon..... Vancouver
- Dr. L. B. Kingery, Dermatologist..... Portland
- Dr. R. P. Schefter, Eye, Ear, Nose and Throat..... Yakima
- Dr. O. W. Patchett, Eye..... Kennewick
- Dr. T. W. Pyke, Ear, Nose and Throat..... Richland

\*Designates also Examining Surgeon.

**OPHTHALMOLOGIST**

(Eye Doctors)

- Dr. M. Harvey Johnson..... Portland
- Dr. Paul F. Bailey, Jr..... Portland
- Dr. C. W. Browning..... Astoria
- Dr. F. L. Dunnavan..... Vancouver
- Dr. E. A. Underwood..... Vancouver
- Dr. Robt. H. Bedrossian..... Vancouver
- Dr. O. W. Patchett..... Pasco





SPEED TABLE

Time Per Mile		Miles Per Hour	Time Per Mile		Miles Per Hour
Minutes	Seconds		Minutes	Seconds	
0	45	80	1	12	50
0	46	78.3	1	15	48
0	47	76.6	1	20	45
0	48	75	1	25	42.3
0	49	73.5	1	30	40
0	50	72	1	40	36
0	51	70.6	1	45	34.3
0	52	69.2	1	50	32.7
0	53	67.9	2	....	30
0	54	66.6	2	10	27.6
0	55	65.4	2	15	26.6
0	56	64.2	2	20	25.7
0	57	63.1	2	30	24
0	58	62.0	2	40	22.5
0	59	61.0	2	45	21.8
1	....	60	2	50	21.2
1	1	59	3	....	20
1	2	58	3	9	19
1	3	57.1	3	20	18
1	4	56.2	3	31	17
1	5	55.3	3	45	16
1	6	54.5	4	....	15
1	7	53.7	5	....	12
1	8	52.9	6	....	10
1	9	52.1	7	30	8
1	10	51.4	10	....	6

### MAINTENANCE OF WAY CONDITIONAL STOP

(Form Y Train Order)

The following forms of oral authorization by the Foreman and acknowledgment of understanding by the engineer are to be used to permit trains to pass a red flag without stopping within the limits of a Form Y train order.

Foreman will state: "Burlington Northern Railway Foreman calling Extra 232 East about Order No. (Form Y Train Order No.)"

Engineer must respond, identifying his train as: "This is Burlington Northern engineer, Extra 232 East."

When engineer has answered as above, the foreman will state: "Extra 232 East may pass red signal at (Location) without stopping."

The foreman may also authorize a different speed from that shown in the Form Y train order by adding to his instructions: "Proceed at \_\_\_\_\_ MPH." or "Proceed at normal speed."

The engineer must repeat back to the foreman the instructions that are given him.