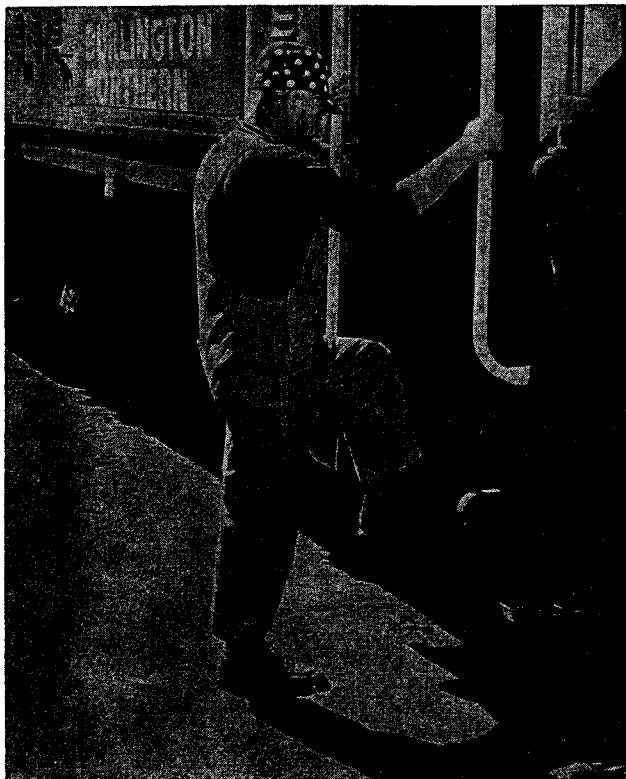


BE SAFE
Now...



**WHEN GETTING OFF STANDING
EQUIPMENT—HANG ONTO
HAND HOLD UNTIL YOUR
FOOT IS FIRMLY ON THE
GROUND.**

**BURLINGTON
NORTHERN
INC.**

**PORTLAND
REGION**

**TIME
TABLE
4**

**To be used in conjunction with
Special Instructions currently in effect**

**IN EFFECT AT 12:01 A.M.
Pacific Standard Time**

Sunday, June 20, 1971

Including National Railroad Passenger Corporation (NRPC) Trains

**Asst. Vice President
Transportation
R. G. JOHNSON**

**Asst. Vice President
Operations
J. W. WICKS**

**Superintendent
G. W. SAYLOR**

2 WESTWARD

FIRST SUBDIVISION

EASTWARD

Rule 6(A) Signs	Capacity of Sidings	Station Numbers	FIRST CLASS	Distance from Cheney	MAIN LINE Portland Divn STATIONS Telegraph Offices and Calls	FIRST CLASS
			31 NRPC Daily			32 NRPC Daily
CJTY	108	63014	10.45 ³² PM	00.0	CY CHENEY	A 10.45 ³¹ PM
P	84	63019	10.50	4.9	BABB	10.40
P	119	63028	10.59	14.4	FISHTRAP	10.31
P	121	63039	11.09	24.7	SPRAGUE	10.21
P	119	63048	11.21	34.5	KEYSTONE	10.10
P	44	63054	11.26	40.1	TOKIO	10.04
PQYC	106	63062	11.35	48.3	RV RITZVILLE	9.56
P	120	63072	11.44	57.7	PAHA	9.45
PWO	122	63074	11.51	65.4	LD LIND	9.37
P	108	63087	12.02 AM	73.3	PROVIDENCE	9.27
P	46	63090	12.06	76.4	BEATRICE	9.22
P	108	63095	12.12	81.3	CUNNINGHAM	9.17
P	43	63098	12.15	84.5	HATTON	9.12
CJQWY	W90 E95	63108	12.30	93.6	CN CONNELL	8.59
P	45	63113	12.36	98.9	CACTUS	8.53
JP	129	63117	12.40	103.1	MESA	8.48
P	39	63126	12.49	111.8	ELTOPIA	8.40
P	90	63131	12.54	116.8	SAGEMOOR	8.35
P	118	63135	12.59	121.4	GLADE	8.30
JBCKQR FTWYZ		12144	1.20	129.0	PA RN PASCO	s 8.20
J		12146	1.23	130.7	SPAS JCT.	8.05
OPY	80	12147	1.25	131.8	K KENNEWICK	8.03
P	117	13007	1.31	136.3	VISTA	7.58
P	E118 W118	13017	1.40	145.8	BADGER	7.48
P	129	13024	1.47	152.6	KIONA	7.40
JPRTY	185	13034	2.01	162.8	GIBBON	7.29
PYC	E97 W64	13040	2.09	169.0	RS PROSSER	7.21
P	117	13046	2.15	174.5	BYRON	7.16
P	E64 W44	13052	2.21	180.5	MABTON	7.10
P	116	13060	2.30	188.9	SATUS	7.01
P	91	13066	2.36	194.5	ALFALFA	6.55
QBKPJ CWYR	E137 W120	13070	2.41	199.4	TN TOPPENISH	6.50
PYC	E96 W88	13078	2.49	206.8	WA WAPATO	6.42
PRJ	68	13082	2.54	211.2	PARKER	6.38
P	173	13086	2.58	214.8	UNION GAP	6.34
BCKQRT WYZF		13089	3.15 AM	218.5	YA YAKIMA	s 6.30 PM

ABS
Rule 261-264

ABS

EXCEPT IN RULE 261 TERRITORY WHEN IN SERVICE, EASTWARD TRAINS ARE SUPERIOR TO WESTWARD TRAINS OF THE SAME CLASS. DOUBLE TRACK BETWEEN PASCO AND COLUMBIA RIVER BRIDGE.

Northern Pacific Ry. signal aspects as contained in the 1967 edition Consolidated Code of Operating Rules are in effect on this Sub-division.

Rule 6(A) Signs	Capacity of Sidings	Station Numbers	SECOND CLASS		Distance from Pasco	MAIN LINE Portland Divn	
			1265	1263		STATIONS	
			Daily	Daily		Telegraph Offices and Calls	
JI		12146	1.15 PM		1.6		SP&S JCT. 1.2
P	154	12147	1.17		2.8		KENNEWICK 4.6
QPC	68	12151	1.22		7.4	FN	FINLEY 8.1
P	138	12159	1.31		15.5		YELLEPIT 12.5
P	138	12172	1.44		28.0		BERRIAN 11.3
QPO	139	12183	1.56		39.3	MO	PLYMOUTH 12.2
P	139	12195	2.09		51.5		PATERSON 10.2
P	140	12205	2.20		61.7		WHITCOMB 11.9
P	139	12218	2.32		73.6		McCREDIE 9.9
QPO	139	12228	2.42		83.5	RE	ROOSEVELT 11.9
P	139	12240	2.54		95.4		BATES 10.9
P	140	12250	3.05		106.3		TOWAL 11.4
P	139	12261	3.17		117.7		MARYHILL 7.5
CBFJKP QRTWYZ		12269	3.30 3.40	7.00 AM	125.2	X	WISHRAM 2.9
PY		12272	3.45	7.05	128.1		AVERY 9.9
P	121	12283	3.55	7.15	138.0		NORTH DALLES 3.0
QJPC	73	12290	4.02	7.23	146.0	YA	LYLE 9.4
QPO	121	12299	4.12	7.33	155.4	WS	BINGEN-WHITE SALMON 3.4
P		12303			158.8		UNDERWOOD 1.6
P	81	12304	4.24	7.38	160.4		HOOD 11.4
P	124	12316	4.36	7.50	171.8		HOME VALLEY 5.2
QPO	117	12321	4.42	7.56	177.0	NS	STEVENSON 5.0
P	121	12326	4.47	8.01	182.0		NORTH BONNEVILLE 7.2
P	120	12333	4.55	8.09	189.2		SKAMANIA 14.1
P	99	12347	5.10	8.24	203.3		WASHOUGAL 4.2
OPQ	126	12351			207.5	MA	CAMAS 4.0
P	131	12355			211.5		FISHER 5.3
P		12361			216.8		McLOUGHLIN 2.4
		12363			219.2		EAVAN 2.1
BCFKPJ RTWXYZ		12365	A 5.40 PM	A 8.50 PM	221.3	MX	VANCOUVER

ABS
CTC

EXCEPT ON DOUBLE TRACK OR CTC TERRITORY WHEN IN EFFECT, EASTWARD TRAINS ARE SUPERIOR TO WESTWARD TRAINS OF THE SAME CLASS

SP&S Ry. signal aspects as contained in the 1967 edition Consolidated Code of Operating Rules are in effect on this Subdivision.

4 WESTWARD

THIRD SUBDIVISION

EASTWARD

Rule (A) Signals	Capacity of Sidings	Station Numbers	FIRST CLASS			Distance from Portland	MAIN LINE Portland Divn STATIONS Telegraph Offices and Calls	FIRST CLASS		
			195	11	199			198	12	196
			NRPC Daily	NRPC Mo-Th-Sa	NRPC Daily			NRPC Daily	NRPC Mo-Th-Sa	NRPC Daily
CBFJKQ RTWXYZ	E74 W71	18086	s 7.22 PM	s 2.10 PM	s 11.22 AM	91.5	CN CENTRALIA 3.7	A s 9.44 AM	s 3.17 PM	A s 6.44 PM
POYRX	E49	18090	7.28	2.17	11.28	87.8	CH CHEHALIS 1.0	9.37	3.08	6.37
PTXYJ		18091				86.8	JO CHEHALIS JCT. 0.3			
PX	E68 W66	18097	7.38	2.26	11.38	80.5	NAPAVINE 6.3	9.27	2.59	6.27
OPX	W66	18104	7.44	2.32	11.44	74.2	WI WINLOCK 6.4	9.21	2.52	6.21
PX	E83 W94	18111	7.50	2.38	11.50	67.8	VADER 9.6	9.15	2.45	6.15
PX	E96 W84	18120	7.57	2.47	11.57	58.2	CASTLE ROCK 6.3	9.08	2.36	6.08
X		18126				51.9	OSTRANDER 2.1			
PX	S13	18128				49.8	ROCKY POINT 1.5			
QQX	W96	18130	s 8.06	s 2.58	s 12.06 PM	48.3	KS KELSO 2.9	s 8.59	s 2.25	s 5.59
BKPRY		68104				49.0	VW To Longview 3.6			
OPJTX		18134				45.4	JC LONG VIEW JCT. 6.5			
POX	E50 W68	18140	8.16	3.08	12.16	38.9	KA KALAMA 9.2	8.49	2.14	5.49
PX	S26	18150	8.24		12.24	29.7	WOODLAND 5.4	8.41	2.06	5.41
OPX	E92 W73	18155	8.29	3.22	12.29	24.3	RG RIDGEFIELD 11.2 To Rye 3.6	8.36	2.00	5.36
PXJ		18186				13.1	VANCOUVER JCT. 3.1			
CFKJQR TWXYZ	W125	12365	s 8.48	s 3.38	s 12.48	10.0	MX VANCOUVER 1.9	s 8.20	s 1.48	s 5.20
CPIJ		12368		3.41		8.1	KD NORTH PORTLAND JCT. 1.1			5.14
YXP	60	12369		3.43		7.0	EAST ST. JOHNS 2.7			5.12
BCIPRX JKQY		12372		3.47		4.3	BR WILLBRIDGE 2.3			5.08
YX		12373		3.50		2.0	LAKE YARD 2.0			5.04
BCFQR KTWYZ		12374 12375	A 9.10 PM	A 4.00 PM	A 1.10 PM	0.0	OW VC PORTLAND	8.00 AM	1.30 PM	5.00 PM

EXCEPT ON DOUBLE TRACK, OR CTC TERRITORY WHEN INEFFECT, EASTWARD TRAINS ARE SUPERIOR TO WESTWARD TRAINS OF THE SAME CLASS

At Portland, between Union Station and 18th Ave. on eastward main track and 15th Ave. on westward main track, trains and engines will be governed by Portland Terminal RR. Co. rules.

Northern Pacific Ry. and SP&S Ry. signal aspects as contained in the 1967 edition Consolidated Code of Operating Rules are in effect on this Subdivision.

				MAIN LINE Portland Divn	
				STATIONS	
				Telegraph Offices and Calls	
Rule 6(A) Signs	Capacity of Sidings	Station Numbers	Distance from Wishram		
CBFJKP QRTWYXZ		12269	0.0	X	WISHRAM 1.5
IYJP		14002	1.5		O. T. JCT. 4.4
P	79	14008	5.9		MOODY 12.4
P	100	14018	18.3		LOCKIT 8.1
P	41	14026	26.4		DIKE 4.0
P	43	14030	30.4		SINAMOX 9.3
P	112	14040	39.7		OAKBROOK 14.8
QPO		14055	54.6	AU	MAUPIN 1.0
P	82	14056	55.6		CAMBRAI 8.2
P	43	14064	63.8		NENA 7.3
P	103	14071	71.1		DIXON 9.0
P	99	14080	80.1		KASKELA 5.7
OPQ	99	14086	85.8	SJ	SOUTH JCT. 8.2
P	28	14094	94.0		GATEWAY 5.8
P	99	14100	99.8		PAXTON 5.2
OPQ	44	14105	105.0	MD	MADRAS 5.2
OPY	89	14110	110.2	MS	METOLIUS 4.8
P	41	14115	115.0		CULVER 8.6
P	102	14122	121.6		OPAL CITY 7.9
P	42	14130	129.5		TERREBONNE 2.8
OJP	76	14132	132.3	XN	PRINEVILLE JCT. 2.3
OPQY	88	14135	134.6	RD	REDMOND 9.0
P	43	14144	144.2		DESCHUTES 7.3
BCFKPQ RTWYZ		14152	151.5	D	BEND

ABS

SP&S Ry. signal aspects as contained in the 1967 edition Consolidated Code of Operating Rules are in effect on this Subdivision.

6 WESTWARD

FIFTH SUBDIVISION

EASTWARD

Rule 6(A) Signs	Capacity of Sidings	Station Numbers	Distance from Bend	MAIN LINE Portland Divn	
				STATIONS	
				Telegraph Offices and Calls	
BCFKP RTWYZ		14152	0.0	D	BEND 2.5
PY	87	14154	2.8		BEND YARD 10.3
P	168	14165	13.1		LAVA 18.8
P	153	14183	32.0		LAPINE 19.7
P	152	14203	51.7		CRESCENT 16.8
JKOPRTYQ	152	14220	68.5	MU	CHEMULT

BETWEEN CHEMULT AND BIEBER LINE JCT., TRAINS WILL BE GOVERNED BY SOUTHERN PACIFIC RY. TIME TABLE AND RULES

J		14295	144.0		^{75.4} BIEBER LINE JCT. 0.0
BCFKP QRTWYZ		14296	145.0	K	SOUTH KLAMATH 14.1
OP	67	14311	159.1	MR	MERRILL 9.4
OP	152	14320	168.5	MA	MALIN 7.1
PA	85	14327	175.6		STRONGHOLD 12.6
P	97	14340	188.3		MAMMOTH 10.2
P	131	14350	198.6		KEPHART 11.8
P	97	14382	210.5		SCARFACE 11.7
PW	132	14374	222.2		LOOKOUT 11.2
BCKP QRTWY		14385	233.5	B	BIEBER

SIXTH SUBDIVISION
WESTWARD EASTWARD

Rule 6(A) Signs	Capacity of Sidings	Station Numbers	Distance from Goldendale	BRANCH LINE Portland Divn	
				STATIONS	
				Telegraph Offices and Calls	
OPBTRY		64742	0.0	GD	GOLDENDALE 28.2
OP	24	64713	28.2	KI	KLICKITAT 13.4
PCRJYQ	73	12290	41.6	YA	LYLE

SEVENTH SUBDIVISION
WESTWARD EASTWARD

Rule 6(A) Signs	Capacity of Sidings	Station Numbers	Distance from Willbridge	BRANCH LINE Portland Divn	
				STATIONS	
				Telegraph Offices and Calls	
BIJQRYP	77	12372	0.0	BR	WILLBRIDGE
OPY	108	68203	3.0	IN	LINNTON
PJY		68206	5.7		UNITED JCT.
	27	68208	8.3		HOLBROOK
	32	68216	15.6		SCAPOOSE
OBPYQ	57	68223	23.3	H	ST. HELENS
PY	41	68227	27.0		WATERVIEW
P	19	68235	35.1		GOBLE
		68242	41.5		RAINIER
	50	68243	42.5		AVON
P	48	68252	51.5		MAYGER
OP	41	68258	57.9	CN	CLATSKANIE
P	27	68267	66.9		WESTPORT
		68269	69.2		WAUNA
P	41	68274	74.1		CLIFTON
P	19	68282	82.2		KNAPPA
BKQRTYPO		68296	95.4	RO	ASTORIA
JT		68301	101.3		WARRENTON To Camp Clatsop 2.7
		68352	103.1		FLAVEL
		68354	104.0		HAMMOND
		68304	104.0		CAMP CLATSOP
		68314	113.7		SEASIDE

NINTH SUBDIVISION
WESTWARD EASTWARD

Rule 6(A) Signs	Capacity of Sidings	Station Numbers	Distance from Portland	BRANCH LINE Portland Divn	
				STATIONS	
				Telegraph Offices and Calls	
JPY		68707	17.1		BOWERS JCT.
PO	45	68712	21.9	NP	NORTH PLAINS
P	23	68722	31.7		MANNING
P	27	68729	38.8		TOPHILL
P	27	68733	43.1		BRAUN
PRTY	Yard	68739	48.5		VERNONIA

EIGHTH SUBDIVISION 7
WESTWARD EASTWARD

Rule 6(A) Signs	Station Numbers	Capacity of Sidings	Distance from Portland	BRANCH LINES Portland Divn	
				STATIONS	
				Telegraph Offices and Calls	
PJY	68206		16.8		UNITED JCT.
	68701		11.0		BAN SPUR
P	68705		14.6		TUNNEL SPUR
JPY	68707		17.1		BOWERS JCT.
	68404	41	20.9	Auto. Blk.	MERLE
YPJT	68405		21.5		FOREST GROVE JCT. To Forest Grove 10.6
POYQ	68409	72	26.7	VO	BEAVERTON
JP	68411		28.1		BEBURG

BETWEEN BEBURG AND GRETON TRAINS WILL BE GOVERNED BY SOUTHERN PACIFIC TIME TABLE AND RULES

JP	68414		31.2		GRETON
PY	68415	71	32.1		TIGARD
P	68426	18	43.0		WILSONVILLE
P	68428	71	45.4		CURTIS
P	68437	69	54.5		WEST WOODBURN
PY	68452	74	68.6		BUSH
QYBPKO	68454	Yard	71.2	SA	SALEM
PY	68456	108	72.8		MINTO
P	68468	69	84.8		SIDNEY
ZBRPY QTKOJF	68479	Yard	96.5	YD	ALBANY YARD
VPY	68481		97.8		ALBANY
	68499	5	116.1		TULSA
P	68507		124.2		HARRISBURG
PO	68512		123.7	JO	JUNCTION CITY
	68519		126.1		ENID
BKR QOPY	68526		140.0	G	EUGENE

SP&S Ry. signal aspects as contained in the 1967 edition Consolidated Code of Operating Rules are in effect on this Subdivision.

8

TENTH SUBDIVISION
WESTWARD EASTWARD

Rule 6(A) Signs	Capacity of Sidings	Station Numbers	SECOND CLASS	Distance from Centralia	BRANCH LINE Portland Divn STATIONS Telegraph Offices and Calls	SECOND CLASS
			1299			1298
			Daily Ex. Sun			Daily Ex. Sun.
BCFJKQR TWXYZ		18086	1.01 AM	0.0	CN CENTRALIA	A 5.40 PM
A		67602	1.10	2.4	BLAKESLEE JCT. ^{2.4}	5.34
	57	67606	1.19	6.6	GRAND MOUND ^{4.2}	5.24
	49	67611	1.28	11.2	ROCHESTER ^{4.6}	5.12
JPT	75	67614	1.35	13.8	GATE ^{2.6}	5.06
P	55	67619	1.44	18.7	OAKVILLE ^{4.9}	4.54
P		67627	1.59	26.6	PORTER ^{7.9}	4.35
OBJPKTY	52	67633	2.25	33.2	ELMA ^{6.0}	4.17
	27	67637	2.32	37.0	SATSOP ^{3.8}	4.06
PY	58	67643	2.43	43.0	MONTESANO ^{6.0}	3.52
PT		67651	3.00	51.4	ABERDEEN JCT. ^{3.4}	3.35
JPYZ		67654	3.30	54.2	ABERDEEN ^{2.8} To South Aberdeen Jct. 0.6	3.30

Between Aberdeen and South Aberdeen Jct., Trains will be Governed by Union Pacific Time Table and Rules

Y	30	67903		56.5	COSMOPOLIS ^{1.7}	
Y		67901		54.8	SOUTH ABERDEEN JCT. ^{0.6}	
Y	50	67902		55.4	SOUTH ABERDEEN ^{0.5}	
Y	30	67913		64.9	MARKHAM	
OBFKPQ TWYZR		67659	A 3.45 AM	57.7	HO To Aberdeen 3.5 HOQUIAM ^{12.6}	3.00 PM
	S5	67670		70.3	TULIPS ^{3.2}	
	17	67674		73.5	COPALIS ^{3.2}	
	43	67677		76.7	CARLISLE ^{1.1}	
		67678		77.8	ONFLOW ^{3.7}	
	17	67682		81.5	ALOHA ^{1.7}	
		67684		83.2	PACIFIC BEACH ^{2.5}	
PT	36	67686		85.7	MOCLIPS	

EXCEPT ON DOUBLE TRACK, EASTWARD TRAINS ARE SUPERIOR TO WESTWARD TRAINS OF THE SAME CLASS

DOUBLE TRACK BETWEEN ABERDEEN AND HOQUIAM RIVER DRAWBRIDGE

ELEVENTH SUBDIVISION
WESTWARD EASTWARD

Rule 6(A) Signs	Capacity of Sidings	Station Numbers	Distance from Albany Yard	BRANCH LINE Portland Divn STATIONS Telegraph Offices and Calls
ZKBPY QTORF		68479	0.0	ALBANY YARD YD
OJY			0.9	S. P. CONN. ALBANY ^{0.2} 13.6

BETWEEN S.P. CONN. ALBANY AND LEBANON TRAINS WILL BE GOVERNED BY S.P. RY. TIME TABLES AND RULES

OKPJY		68814	14.5	LEBANON BA O. E. Conn. ^{0.3}
Y		68815	14.8	LEBANON (O. E. Siding) ^{1.1}
OPY	66	68816	15.9	WELDWOOD V ^{8.4}
		68824	24.3	NARROWS ^{4.5}
QPYO RBT		68829	28.8	SWEET HOME SW ^{3.1}
Y		68832	31.9	FOSTER

TWELFTH SUBDIVISION
WESTWARD EASTWARD

Rule 6(A) Signs	Capacity of Sidings	Station Numbers	Distance from Yakima	BRANCH LINE Portland Divn STATIONS Telegraph Offices and Calls
JCBFKPQ RTWYZ		13089	0.0	YA-KM YAKIMA
	9	65203	2.7	FRUITVALE ^{1.5}
JY	18	65204	4.2	BRACE
				To Weikel 4.9 To Glead 2.6
	13	65305	9.1	WEIKEL ^{3.6}
	25	65309	12.7	COWICHE ^{0.6}
		65310	13.3	HOLTZINGER ^{2.5}
TY	50	65312	15.8	TIETON
	53	65206	6.8	GLEED ^{1.2}
	10	65208	8.0	ESCHBACH ^{5.5}
	102	65214	13.5	NACHES

THIRTEENTH SUBDIVISION
WESTWARD EASTWARD

Rule 6(A) Signs	Capacity of Sidings	Station Numbers	Distance from Yakima	BRANCH LINE Portland Divn	
				STATIONS	
Telegraph Offices and Calls					
JCBFKP QRTWYZ		13089	0.0	YA	YAKIMA
	7	65403	3.1		TERRACE HEIGHTS
	9	65406	5.5		BIRCHFIELD
	33	65409	8.5		MOXEE CITY

FOURTEENTH SUBDIVISION
WESTWARD EASTWARD

Rule 6(A) Signs	Capacity of Sidings	Station Numbers	Distance from Toppenish	BRANCH LINE Portland Divn	
				STATIONS	
Telegraph Offices and Calls					
OJPBKWYQ		13070	0.0	TN	TOPPENISH
	11	65103	5.0		YETHONAT
	15	65106	7.9		ASHUE
P	29	65109	10.9		FARRON
P	45	65111	12.0		HARRAH
	29	65113	15.1		BROWNSTOWN
P	28	65114	16.3		RUPPLE
PT	29	65120	21.7		WHITE SWAN

FIFTEENTH SUBDIVISION
WESTWARD EASTWARD

Rule 6(A) Signs	Capacity of Sidings	Station Numbers	Distance from Parker	BRANCH LINE Portland Divn	
				STATIONS	
Telegraph Offices and Calls					
JPRTY	190	13034	46.5		GIBBON
P	58	65003	44.1		WHITSTRAN
P	63	65006	41.0		NORTH PROSSER
PYO	68	65012	34.3	GW	GRANDVIEW
	19	65016	30.4		LICHTY
PYO	63	65020	26.7	SY	SUNNYSIDE
P	30	65024	22.8		OUTLOOK
PY	35	65029	17.9		GRANGER
PY	31	65034	12.3		ZILLAH
PYO	34	65037	9.4	BN	BUENA
PY	58	65040	6.5		SAWYER
	14	65042	4.2		DONALD
			1.7		U.P. CROSSING
JPR	68	13082	0.0		PARKER

SIXTEENTH SUBDIVISION
WESTWARD EASTWARD

Rule 6(A) Signs	Capacity of Sidings	Station Numbers	Distance from Adco	BRANCH LINES Portland Divn	
				STATIONS	
Telegraph Offices and Calls					
J		62425	0.0		ADCO
					To Adrian 0.6 To Wheeler 21.6
J		01983	0.6		ADRIAN
ORPQYB	180	62839	21.6	WH	WHEELER
RJPT		62832	29.4		BASSETT JCT.
					To Ritell 0.4 To Schrag 12.3
	25	62912	41.7		SCHRAG
	30	62831	42.1		RITELL
OYRBPQ	50	62826	47.1	XO	WARDEN
OYPQ	50	62817	56.4	BR	BRUCE
	S17	62810	61.6		SHANO
BCJQRWY		63108	72.1	CN	CONNELL

EASTWARD—
Bassett Jct.
to Schrag

TWENTY-THIRD SUBDIVISION
WESTWARD EASTWARD

Rule 6(A) Signs	Capacity of Sidings	Station Numbers	Distance from Bangor	BRANCH LINE Portland Divn	
				STATIONS	
Telegraph Offices and Calls					
PTY		67768	0.0		BANGOR
P	49	67765	3.4		SILVERDALE
PJ	63	67762	5.9		N. A. D. JCT.
					To Bremerton Jct. 5.3
BPROTY		67805	15.8	BM	BREMERTON
JP	64	67757	11.2		BREMERTON JCT.
P	59	67754	14.3		BELFAIR
P	59	67741	26.9		ALLYN
P		67728	39.9		BAY SHORE
OPRYT		67725	43.4	NS	SHELTON
P	55	67715	54.1		MARMAC
P	23	67710	58.4		STIMSON
					To McCleary Jct. 2.6
	S15	67708	61.0		McCLEARY
JPTY	14	67707	61.7		McCLEARY JCT.
	S86	67704	64.5		WHITES
BJKPTYO	77	67633	68.5	EF	ELMA

EASTWARD—
Elma to Bangor, McCleary Jct. to McCleary, and Bremerton Jct. to Bremerton.

The line between Shelton-Bangor-Bremerton is owned by the United States Government and its maintenance and operation by the BN Inc. is covered by contract with the Government.

Rule 6(A) Signs	Capacity of Sidings	Station Numbers	Distance from Scribner	MAIN LINE Portland Divn	
				STATIONS	
Telegraph Offices and Calls					
QJPO	69	12008	0.0	SC	SCRIBNER
P	76	12014	6.7		SOUTH CHENEY
P	111	12021	12.8		MOCK
P	121	12032	24.1		RODNA
QPO	E 128 W 93	12040	32.7	A	LAMONT
P	120	12051	43.6		MACALL
P	122	12064	56.3		BENGE
P	120	12076	67.9		HOOPER
QPO	E 124 W 69	12084	76.5	WA	WASHTUCNA
P	120	12097	89.6		KAHLOTUS
P	86	12107	98.8		FARRINGTON
P	107	12112	104.6		BURR
J		12118	110.5		SNAKE RIVER JCT.
QPO	73	12119	111.1	SR	SNAKE RIVER
P	121	12121	113.4		VOTAW
P	120	12130	122.6		LEVEY
P	66	12137	129.4		MARTINDALE
IJP		12142	133.9		AINSWORTH JCT.
PZXTYW RBCKFIQ		12144	136.1	RN PA	PASCO

Rule 261-264
ABS

SP&S Ry. signal aspects as contained in the 1967 edition Consolidated Code of Operating Rules are in effect on this Subdivision.

WESTWARD TWENTY-SECOND SUBDIVISION EASTWARD

Rule 6(A) Signs	Capacity of Sidings	Station Number	Distance from Mesa	BRANCH LINES Portland Divn	
				STATIONS	
Telegraph Offices and Calls					
P	129	63117	00.0		MESA
	68	63708	8.5		BASIN CITY
	52	63717	17.5		SAGEHILL
			21.3		END OF TRACK

WESTWARD TWENTY-FOURTH SUBDIVISION EASTWARD

Rule 6(A) Signs	Capacity of Sidings	Station Numbers	Distance from Chehalis Jct.	BRANCH LINES Portland Divn	
				STATIONS	
Telegraph Offices and Calls					
JPYT		16091	0.0		CHEHALIS JCT.
		68005	4.7		ADNA
RY		68007	6.6		MILLBURN
	29	68010	10.0		CERES
P		68012	12.2		MESKILL PIT
Y	85	68016	16.3		DRYAD
JRY		68017	16.8		DRYAD JCT.
OYR	55	68022	22.3	PL	PE ELL
	50	68029	28.8		PLUVIUS
		68035	35.2		FRANCES
	6	68038	37.9		LEBAM
		68042	42.3		HOLCOMB
		68046	46.5		MENLO
	11	68051	50.5		WILLAPA
BO	70	68053	53.1	ND	RAYMOND
WT	66	68057	56.5		SOUTH BEND

**EIGHTEENTH SUBDIVISION
WESTWARD EASTWARD**

Rule 6(A) Signs	Capacity of Sidings	Station Numbers	Distance from Dayton	BRANCH LINE Portland Divn STATIONS	
				Telegraph Offices and Calls	
JP		12142	95.4	Rule 261-264	AINS WORTH JCT.
P	21	64104	94.1		BURBANK
JP	65	64106	92.4		VILLARD JCT.

BETWEEN VILLARD JCT., AND ATTALIA, TRAINS WILL BE GOVERNED BY CTC OPERATING RULES AND UNION PACIFIC RAILROAD, OREGON DIVISION, BLOCK AND INTERLOCKING SIGNAL INDICATIONS.

Rule 6(A) Signs	Capacity of Sidings	Station Numbers	Distance from Dayton	BRANCH LINE Portland Divn STATIONS
				Telegraph Offices and Calls
POJRTY	65	64112	86.0	A ATTALIA
				8.5 SLATER
				6.8 ADKINS
P	28	64216	70.7	5.4 EUREKA
PJRTY	43	64221	65.3	3.4 LAMAR
				3.6 PADDOCK
P	28	64306	55.9	0.9 CLIMAX
				5.3 RULO
				2.7 THIEL
				3.3 DRY CREEK
				3.5 PEDIGO
BKOPRWYZ		64331	34.7	F WALLA WALLA
				4.0 TRACY JCT.
J	20	64335	30.7	1.1 To Sapouil 3.1
				HARBERT
				2.6 TRACY
				1.0 SAPOLIL
				2.5 BUROKER
				1.2 GILLIAM
				2.9 DIXIE
				3.3 EASTMAN
				3.4 MINNICK
				5.2 COPPEI
				3.3 WAITSBURG
JRY		64357	7.9	1.8 WAITSBURG JCT.
				0.9 HUNTSVILLE
Y	21	64358	7.0	3.4 LONG
				3.6 DAYTON
ORY		64365	0.0	DF

TRAINS MOVING TO RIPARIA FROM AINS WORTH JCT. WILL OPERATE ON THE UNION PACIFIC R.R. BETWEEN ATTALIA-WALLULA AND RIPARIA AND WILL BE GOVERNED BY UNION PACIFIC TIME TABLE AND RULES.

**TWENTY-FIRST SUBDIVISION
WESTWARD EASTWARD**

Rule 6(A) Signs	Capacity of Sidings	Station Numbers	Distance from Monumental	BRANCH LINE Portland Divn STATIONS	
				Telegraph Offices and Calls	
		64014	0.0	MONUMENTAL	
				2.1 WINDUST	
JO	36	64012	2.1	12.3 SR SNAKE RIVER JCT.	
		12118	14.4		

**NINETEENTH SUBDIVISION 11
WESTWARD EASTWARD**

Rule 6(A) Signs	Capacity of Sidings	Station Numbers	THIRD CLASS 1247 Daily Ex. Sun.	Distance from Attalia	BRANCH LINE Portland Divn STATIONS	THIRD CLASS 1246 Daily Ex. Sun.
					Telegraph Offices and Calls	
RJPTYO	65	64112		0.0	A ATTALIA	
PRYO	32	64113		0.8	JN WALLULA	
JPY		64116		2.7	WALLULA JCT.	
J		64119	7.10 AM	6.3	ZANGAR JCT.	A 12.50 PM

ALL TRAIN MOVEMENTS BETWEEN ATTALIA AND ZANGAR JCT. WILL BE GOVERNED BY CTC OPERATING RULES AND UNION PACIFIC RAILROAD, OREGON DIVISION, BLOCK AND INTERLOCKING SIGNAL INDICATIONS.

Rule 6(A) Signs	Capacity of Sidings	Station Numbers	THIRD CLASS 1247 Daily Ex. Sun.	Distance from Attalia	BRANCH LINE Portland Divn STATIONS	THIRD CLASS 1246 Daily Ex. Sun.
					Telegraph Offices and Calls	
		26	f 7.23	13.1	6.8 RING	f 12.32
		28	f 7.45	17.7	4.6 VAN SYCLE	f 12.14
		34	f 7.55	20.3	2.6 STANTON	f 12.04 PM
JPRT		23	f 8.00	21.6	1.3 SMELTZ	f 11.57 AM
					To Apex 1.0	
		19		25.1	3.5 DUROC	
		19		27.6	2.5 WAYLAND	
		27		30.3	2.7 WATERMAN	
RTYO		26		36.0	5.7 ATHENA	
		11	f 8.05	22.6	2.9 APEX	f 11.52
		W27 E23	s 8.20	25.5	4.5 HX HELIX	s 11.42
		38	f 8.35	30.0	4.4 MYRICK	s 11.22
		12	f 8.50	34.4	1.2 MCCORMMACH	s 11.07
		28	f 8.55	35.6	5.9 FULTON	s 11.02
P		64153	As 9.05	41.5	5.0 U.P. CONNECTION	10.40

BETWEEN CONNECTION WITH UP, OREGON DIVISION, AND 1500 FEET WEST OF BN YARD CONNECTION ON UP, OREGON DIVISION, TRAINS WILL USE MAIN TRACK OF UP GOVERNED BY UP SPECIAL INSTRUCTIONS, AND RULES AND INSTRUCTIONS GOVERNING THE OPERATION OF TRAINS BY CENTRALIZED TRAFFIC CONTROL SYSTEM.

RTYO		64155	As 9.15 AM	43.4	1.9 ND PENDLETON	10.35 AM
------	--	-------	------------	------	------------------	----------

EXCEPT IN CTC LIMITS WHEN IN SERVICE, EASTWARD TRAINS ARE SUPERIOR TO WESTWARD TRAINS OF THE SAME CLASS EXCEPT NO. 1247 IS SUPERIOR TO NO. 1246.

**TWENTIETH SUBDIVISION
WESTWARD EASTWARD**

Rule 6(A) Signs	Capacity of Sidings	Station Numbers	Distance from Eureka	BRANCH LINE Portland Divn STATIONS	
				Telegraph Offices and Calls	
JPRTY	43	64221	0.0	EUREKA	
		15	2.3	2.3 BABCOCK	
		49	4.8	2.5 LEE	
		28	7.8	3.0 ELWOOD	
		32	11.6	3.8 CLYDE	
		14	13.2	1.6 PICKARD	
		16	14.9	1.7 RESER	
		39	19.5	4.6 PLEASANT VIEW	

**BUSINESS TRACKS NOT SHOWN AS STATIONS ON TIME TABLE
PORTLAND DIVISION**

Name	Location	Capacity Cars	Switch Opens	Name	Location	Capacity Cars	Switch Opens
First Subdivision				Seventh Subdivision—Cont.			
63045 Pifer.....	3.4 miles east of Keystone.....	19		68255 Quincy Spur.....	3.5 miles west of Mayger.....	13	West
63115 Mesa Pit.....	2.0 miles west of Cactus.....	40		68262 Marshland.....	4.4 miles west of Clatskanie.....	20	West
63119 Edwards.....	2.4 miles west of Mesa.....	58		68273 Bradwood Loading Track.....	1.6 miles east of Clifton.....	13	Both
Second Subdivision				68279 Brownsmead.....	3.2 miles east of Knappa.....	16	East
12154 Kerley Chemical Lead Track..	0.8 mile west of Finley.....	7	East	68286 Svensen.....	3.7 miles west of Knappa.....	2	West
12154 Kerley Chemical Corporation..	3.6 miles west of Finley.....	5	West	68292 Mill Creek Naval.....	3.6 miles east of Astoria.....	19	East
12181 North McNary.....	3.0 miles east of Plymouth.....	12	East	68293 Tongue Point.....	3.0 miles east of Astoria.....	18	East
12200 Ballast Track.....	3.9 miles east of Whitcomb.....	37	Both	68312 Bayview Transit Mix.....	1.9 miles east of Seaside.....	4	East
12213 Alderdale.....	4.6 miles east of McCredie.....	18	West	68351 Warrenton Clay.....	1.1 miles east of Flavel.....	53	West
12234 Sundale.....	4.5 miles east of Bates.....	17	West	68353 Bioproducts.....	0.3 mile east of Hammond.....	4	West
12244 Goodnoe.....	5.2 miles west of Bates.....	5	West	Eighth Subdivision			
12254 Harvey Alum. Co.....	Cliffs.....		West	68601 Orenco.....	0.8 miles west of Forest Grove Jct.....	12	Both
12255 Cliffs.....	5.0 miles east of Maryhill.....	33	West	68603 Sewell.....	2.9 miles west of Forest Grove Jct.....	6	East
12278 Dow Chem. Co.....	3.7 miles east of North Dalles.....	50	East	68605 Hillsboro.....	4.5 miles west of Forest Grove Jct.....	39	Both
12279 Dallesport Setout.....	3.3 miles east of North Dalles.....	26	West	68608 Cornelius.....	7.9 miles west of Forest Grove Jct.....	11	Both
12300 Underwood Fruit & Whse. Co.....	0.9 mile west of Bingen-White Salmon.....	11	East	68611 Forest Grove.....	10.6 miles west of Forest Grove Jct.....	63	Both
12304 Broughton Lumber Co.....	1.3 miles west of Underwood.....	5	East	68402 Bendemeer.....	2.0 miles east of Merle.....	2	East
12309 Cooks.....	5.1 miles west Hood.....	15	West	68409 Beaverton Old Siding.....	1.4 miles east of Beburg.....	5	Both
12322 Stevenson Plywood Co.....	1.6 miles west of Stevenson.....	69	East	68410 General Motors.....	2.1 miles east of Beburg.....	57	East
12322 Hegewald Timber Co.....	1.6 miles west of Stevenson.....	57	West	68417 Durham.....	2.3 miles west of Tigard.....	5	East
12337 Frindle.....	4.3 miles west of Skarunia.....	12	East	68417 U & I Sugar.....	2.3 miles west of Tigard.....	11	East
12343 Mt. Pleasant.....	4.0 miles east of Washougal.....	121	Both	68419 Tualatin.....	4.0 miles west of Tigard.....	8	Both
12349 Nu Lam Wood Products.....	2.0 miles west of Washougal.....	9	East	68420 Albertson-Oregon Culvert Co.....	5.4 miles west of Tigard.....	4	West
12350 Camas-Washougal Port Dock.....	2.0 miles east of Camas.....	15	East	68422 Tonquin.....	6.9 miles west of Tigard.....	17	Both
Third Subdivision				68423 Mulloy.....	5.2 miles east of Curtis.....	6	East
16106 Millman Lumber Co.....	1.8 miles west of Winlock.....	5	West	68426 Wilsonville.....	2.4 miles east of Curtis.....	24	Both
16114 Olequa.....	2.7 miles west of Vader.....	26	West	68432 Donald.....	3.7 miles west of Curtis.....	21	Both
16142 North Pacific Grain Growers..	1.5 miles west of Kalama.....	38	East	68436 Loganville.....	0.9 mile east of West Woodburn.....	4	West
68152 Ampere.....	1.1 miles west of Rye.....	20	East	68440 St. Louis.....	2.9 miles west of West Woodburn.....	8	East
Fourth Subdivision				68444 Waconda.....	6.8 miles west of West Woodburn.....	6	East
14047 Sherar.....	7.3 miles east of Maupin.....	34	East	68446 Hopmers.....	5.5 miles east of Bush.....	32	Both
14068 Dant.....	3.7 miles west of Nena.....	3	East	68447 Quinaby.....	4.5 miles east of Bush.....	7	Both
14108 Agency.....	2.5 miles west of Madras.....	6	West	68449 Chemawa B. P. A.....	2.7 miles east of Bush.....	36	West
Fifth Subdivision				68458 Roberts.....	3.1 miles west of Minto.....	21	East
14190 Beal.....	6.3 miles west of Lapine.....	27	West	68463 Orville.....	4.9 miles east of Sidney.....	14	Both
14300 Henley.....	3.4 miles west of So. Klam.....	25	Both	68471 Talbot.....	3.1 miles west of Sidney.....	15	Both
14303 Dehlinger.....	6.6 miles west of So. Klam.....	24	Both	68474 Dever.....	6.0 miles west of Sidney.....	14	West
14312 Stonebridge.....	1.7 miles west of Merrill.....	28	Both	68481 Albany.....	1.3 miles west of Albany Yard.....	6	East
14316 Adams Point.....	5.3 miles west of Merrill.....	46	Both	68485 Pirtle.....	5.2 miles west of Albany Yard.....	6	East
14325 Dalton.....	4.6 miles west of Malin.....	60	Both	68487 Ehlen-Van Waters and Rogers.....	7.5 miles west of Albany Yard.....	10	East
14332 Hannchen.....	4.7 miles west of Stronghold.....	21	West	68489 Verdure.....	9.9 miles west of Albany Yard.....	4	West
14333 Kandra.....	5.4 miles west of Stronghold.....	42	Both	68494 Fayetteville.....	14.6 miles west of Albany Yard.....	12	East
14346 Tionesta.....	6.0 miles west of Mammoth.....	39	Both	68496 Munson.....	15.4 miles east of Junction City.....	1	East
14359 Hollenbeck.....	3.3 miles east of Scarface.....	44	Both	68497 Potter.....	14.9 miles east of Junction City.....	3	East
Sixth Subdivision				68499 Tulsa.....	12.6 miles east of Junction City.....	5	Both
64735 Centerville.....	6.3 miles west of Goldendale.....	18	Both	68500 American.....	11.7 miles east of Junction City.....	29	West
64730 Warwick.....	11.4 miles west of Goldendale.....	16	Both	68501 Miller Seed Co.....	10.4 miles east of Junction City.....	3	West
64723 Swale.....	18.6 miles west of Goldendale.....	5	East	68504 Cartney.....	7.3 miles east of Junction City.....	6	East
64717 Wahkiakus.....	3.5 miles east of Klickitat.....	13	Both	68507 Harrisburg.....	4.5 miles east of Junction City.....	52	Both
64716 Klickitat Springs.....	2.4 miles east of Klickitat.....	5	Both	68516 Meadow View.....	4.7 miles west of Junction City.....	5	East
64710 Pitt.....	3.7 miles west of Klickitat.....	6	Both	68518 Awbrey.....	5.0 miles east of Eugene.....	8	Both
64702 Doubling Spur.....	1.6 miles east of Lyle.....	6	East	68519 Enid.....	3.9 miles east of Eugene.....	55	Both
Seventh Subdivision				68832 Foster.....	3.1 miles west of Sweet Home.....		
68201 Willbridge Siding.....	0.8 mile west of Willbridge.....	77	Both	Ninth Subdivision			
68202 Gasco.....	1.3 miles west of Willbridge.....	25	West	68713 Vadis.....	1.4 miles west of North Plains.....	23	Both
68202 Gasco.....	1.3 miles west of Willbridge.....	23	West	68716 Christie.....	3.6 miles west of North Plains.....	10	East
68202 Gasco.....	1.3 miles west of Willbridge.....	15	East	68718 Banks-Kelley, Farquahar & Co.....	4.2 miles east of Manning.....	4	West
68202 Portland Tug and Barge.....	1.5 miles west of Willbridge.....	13	East	68718 Banks-Hudson House, Inc.....	4.2 miles east of Manning.....	4	West
68205 Harbor Track.....	0.2 mile east of United Jct.....	15	East	68718 Banks-Banks Lumber Co.....	4.2 miles east of Manning.....	6	East
68222 Crown Zellerbach Corp.....	1.5 miles east of St. Helens.....	53	East	68718 Banks-V.S.P. & S.S. R.R., Inc.....	4.2 miles east of Manning.....	10	East
68226 Crown Zellerbach Corp. No. 3.....	0.8 mile east of Waterview.....	42	West	68730 Haydite.....	1.5 miles west of Tophill.....	10	Both
68226 Crown Zellerbach Tracks 1 & 2.....	0.8 mile east of Waterview.....	51	Both				
68237 Trojan.....	1.3 miles west of Goble.....	10	East				
68238 Prescott.....	2.5 miles west of Goble.....	2	East				
68244 Goodat Crushed Rock.....	0.5 mile west of Avon.....	9	East				
68254 Locoda.....	2.2 miles west of Mayger.....						

**BUSINESS TRACKS NOT SHOWN AS STATIONS ON TIME TABLE
PORTLAND DIVISION—Continued**

Name	Location	Capacity Cars	Switch Opens	Name	Location	Capacity Cars	Switch Opens
Eleventh Subdivision				Seventeenth Subdivision			
68815	Lebanon (O. E. Siding)			12140	East Pasco Std. Oil	11	West
	0.3 mile west of Lebanon (O. E. Conn.)	8	Both	12140	East Pasco Permante Cement Co.	16	West
68818	Lebanon Lumber Co.	4	East	12140	East Pasco Tidewater Shaver	15	West
68818	Pacific Northwest Moulding Co.	2	East	12140	East Pasco Shell Chem. Corp.	6	West
68820	Waterloo	3	East	12140	East Pasco Storage No. 1	18	West
68821	Kenshaws-Bauman Sales, Inc.	6	East	12140	East Pasco Storage No. 2	18	West
68821	Bauman Lumber Co.	13	East	12125	Redd	22	West
68821	M. B. Christenson	7	East	12120	Snake River Pit	51	West
68822	G&G Lumber Co.	2	West	12109	Burr Canyon	4	West
68822	Nye	7	East	12094	Harder	17	East
68824	Kell Lumber Co.	3	East	12090	Sperry	40	East
68824	Williamette Fibre & Chipboard Co.	5	East	12083	Washtucna Industry	142	East
68825	Benjo Milling Co.	5	East	12026	Amber	16	West
68825	J. H. Baxter Company	5	East	Eighteenth Subdivision			
68826	Mid Plywood Propane	3	East	64207	LeGrow	6	Both
68826	Mid Plywood, Inc.	8	Both	64213	Welland	8	Both
Twelfth Subdivision				64218	Hatch	16	Both
65311	Tasker	9	East	64307	Harsha	9	Both
65211	Bonlow	3	East	64324	Sudbury	10	East
65210	Rowe	5	East	64329	Penitentiary	10	East
65202	Jack Frost Fruit	9	East	64334	Walair	70	East
65201	Blake, Moffit & Towne	8	West	64335	Craik	2	East
Thirteenth Subdivision				64359	Varna	2	West
65402	National Can	9	West	64360	Dumas	5	East
65404	Valley Junk	3	East	Twentieth Subdivision			
Fourteenth Subdivision				64231	Harvey	7	Both
65108	Venner	10	Both	64238	Tomkins	9	East
Fifteenth Subdivision				Twenty-third Subdivision			
65010	Apricot	25	Both	67761	Wesco	5	East
65017	Sunny Roza	4	East		Pro-Gas	4	West
65018	Sugar Plant No. 2	31	West		Hunt Fuel	2	East
65019	East Way Spur No. 1	10	East	67724	Reed Shingle	6	East
	East Way Spur No. 2	10	East	67724	Olympia Plywood	10	West
65027	Nass	28	Both	67721	Cole Road Bldg. Supply	3	East
65034	Chenauer	5	East	67720	Doubling Spur	12	East
65035	Keek	5	West				
65039	Flint	6	East				
Sixteenth Subdivision							
62845	Banks	20	Both				
62844	Mitchell	11	West				
62836	Atwood	8	West				
62835	Raugust	28	Both				
62905	Barham	23	West				
62907	Schaefer	6					
62820	Simenson	12	West				
62813	Koren	8	West				
62806	Frischknecht	37	Both				
62805	Schlomer	13	West				

CHIEF MEDICAL OFFICERS

- *Dr. Alexander McEwan, Chief Medical Officer... St. Paul, Minn.
- *Dr. Abbott Skinner, Asst. Chief Medical Officer... St. Paul, Minn.
- *Dr. H. W. Hammatt, Asst. Chief Medical Officer... Chicago, Ill.
- *Dr. Hugo F. Schroeckenstein,
Assistant to Chief Medical Officer... St. Paul, Minn.
- *Dr. Merl L. Margason, Medical Director... Portland

LOCAL SURGEONS

BN Clinic, Second Floor, N. P. Freight House, Seattle.

Hours—9:00 AM to 11:59 AM Daily, except Saturdays and Sundays

- | | |
|-----------------------------------------------------------------------------------------------------------------------------------------------------------------------------------------------------------------------------------------------------------------------------------------------------------------------------------------------------------------------------------------------------------------------------------------------------------------------------------------------------------------------------------------------------------------------------------------------------------------------------------------------------------------------------------------------------------------------------------------------------------------------------------------------------------------------------------------------------------------------------------------------------------------------------------------------------------------------------------------------------------------------------------------------------------------------------------------------------------------------------------------------------------------------------------------------------------------------------------------------------------------------------------------------------------------------------------------------------------------------------------------------------------------------------------------------------------------------------------------|------------------------------------------------------------------------------------------------------------------------------------------------------------------------------------------------------------------------------------------------------------------------------------------------------------------------------------------------------------------------------------------------------------------------------------------------------------------------------------------------------------------------------------------------------------------------------------------------------------------------------------------------------------------------------------------------------------------------------------------------------------------------------------------------------------------------------------------------------------------------------------------------------------------------------------------------------------------------------------------------------------------------------------------------------------------------------------------------------------------------------------------------------------------------------------------------------------------------------------------------------------------------------------------------------------------------------------------------------------------------------------------------------------------------------------------------------|
| <ul style="list-style-type: none"> *The Portland Clinic..... Portland *Dr. J. H. Grelle..... Portland *Dr. Allen L. Mundal..... Portland *Dr. Carl B. Cone..... Vancouver Dr. Henry M. Wiswall..... Vancouver *Dr. G. H. Johnson..... Vancouver *Dr. J. A. Wals..... Vancouver Dr. G. F. Parks..... Centralia *Dr. Edward Taylor..... Centralia *Dr. F. Davis..... Kelso *Dr. Ransom L. Smith..... Longview *Dr. C. J. Hoffman..... Woodland *Dr. H. L. Skinner..... Battle Ground
and Ridgefield *Dr. M. C. Lindel..... Montesano *Dr. R. E. Fredericksen..... Aberdeen *Dr. Wayne B. Carte..... Shelton *Dr. H. A. Barner..... Bremerton Dr. W. S. Shepherd..... Camas *Dr. K. F. Stefan..... Washougal Dr. Wayne M. Henkle..... Bingen-
White Salmon *Dr. H. W. Holderby..... Goldendale *Dr. Elsie Tupper..... Goldendale *The Dalles Clinic..... The Dalles *Dr. James R. Schlichting..... The Dalles *Bend Memorial Clinic..... Bend Dr. Samuel Toevs..... Redmond Dr. Robert L. Unger..... Redmond Dr. Roger D. Stack..... Redmond Dr. T. J. Hicks..... Madras Dr. James R. Schlichting..... Maupin Dr. O. L. Zeschin..... St. Helens Dr. E. R. Starr..... Rainier | <ul style="list-style-type: none"> Dr. Otto George..... Clatskanie *Medical Dental Center..... Astoria Dr. R. W. Paroher..... Seaside Dr. F. J. Kaboiseman..... Hillsboro Dr. Gerald B. Smith..... Woodburn *Dr. R. E. Purvine..... Salem Dr. H. Dan Moore..... Albany Dr. L. L. Basinger..... Albany Dr. Charles H. Nelson..... Albany Dr. Ralph E. Herron..... Lebanon *Dr. Robt. Langmack..... Sweet Home Dr. Harold B. Dowling..... Sweet Home *Dr. W. H. Chapman..... Eugene *Dr. W. A. Bartlett..... Klamath Falls *Dr. J. A. Rogers..... Klamath Falls Dr. C. J. Rademacher..... Bend *Dr. A. O. Meier..... Bieber Dr. G. V. Axford..... Pasco Dr. Joseph L. Greenwell..... Pasco Dr. A. M. Gregson..... Pasco Dr. J. M. Pierson..... Kennewick Dr. R. F. Hisey..... Granger Dr. R. V. Axford..... Prosser Dr. Kirk Brown..... Mabton Dr. M. G. Anderson..... Yakima Dr. E. F. Coleman..... Yakima Dr. N. W. Moss..... Yakima Dr. W. A. Gamon..... Cheney Dr. G. S. McConnell..... Ritzville Dr. E. S. Morgan..... Pendleton Dr. J. F. Bittner..... Pendleton Dr. S. R. Hevel..... Waitsburg Wapato Medical Clinic..... Wapato |
|-----------------------------------------------------------------------------------------------------------------------------------------------------------------------------------------------------------------------------------------------------------------------------------------------------------------------------------------------------------------------------------------------------------------------------------------------------------------------------------------------------------------------------------------------------------------------------------------------------------------------------------------------------------------------------------------------------------------------------------------------------------------------------------------------------------------------------------------------------------------------------------------------------------------------------------------------------------------------------------------------------------------------------------------------------------------------------------------------------------------------------------------------------------------------------------------------------------------------------------------------------------------------------------------------------------------------------------------------------------------------------------------------------------------------------------------------------------------------------------------|------------------------------------------------------------------------------------------------------------------------------------------------------------------------------------------------------------------------------------------------------------------------------------------------------------------------------------------------------------------------------------------------------------------------------------------------------------------------------------------------------------------------------------------------------------------------------------------------------------------------------------------------------------------------------------------------------------------------------------------------------------------------------------------------------------------------------------------------------------------------------------------------------------------------------------------------------------------------------------------------------------------------------------------------------------------------------------------------------------------------------------------------------------------------------------------------------------------------------------------------------------------------------------------------------------------------------------------------------------------------------------------------------------------------------------------------------|

SPECIALISTS

- *Dr. Canfield Beattie, Eye, Ear, Nose and Throat..... Portland
- Dr. J. H. Gill, Orthopedic Surgeon..... Vancouver
- Dr. Samuel Osborn, Orthopedic Surgeon..... Vancouver
- Dr. L. B. Kingery, Dermatologist..... Portland
- Dr. R. P. Schefter, Eye, Ear, Nose and Throat..... Yakima
- Dr. O. W. Patchett, Eye..... Kennewick
- Dr. T. W. Pyke, Ear, Nose and Throat..... Richland

*Designates also Examining Surgeon.

OPHTHALMOLOGIST

(Eye Doctors)

- Dr. M. Harvey Johnson..... Portland
- Dr. Paul F. Bailey, Jr..... Portland
- Dr. C. W. Browning..... Astoria
- Dr. F. L. Dunnavan..... Vancouver
- Dr. E. A. Underwood..... Vancouver
- Dr. Robt. H. Bedrossian..... Vancouver
- Dr. O. W. Patchett..... Pasco

SPEED TABLE

Time Per Mile		Miles Per Hour	Time Per Mile		Miles Per Hour
Minutes	Seconds		Minutes	Seconds	
0	45	80	1	12	50
0	46	78.3	1	15	48
0	47	76.6	1	20	45
0	48	75	1	25	42.3
0	49	73.5	1	30	40
0	50	72	1	40	36
0	51	70.6	1	45	34.3
0	52	69.2	1	50	32.7
0	53	67.9	2	30
0	54	66.6	2	10	27.6
0	55	65.4	2	15	26.6
0	56	64.2	2	20	25.7
0	57	63.1	2	30	24
0	58	62.0	2	40	22.5
0	59	61.0	2	45	21.8
1	60	2	50	21.2
1	1	59	3	20
1	2	58	3	9	19
1	3	57.1	3	20	18
1	4	56.2	3	31	17
1	5	55.3	3	45	16
1	6	54.5	4	15
1	7	53.7	5	12
1	8	52.9	6	10
1	9	52.1	7	30	8
1	10	51.4	10	6

MAINTENANCE OF WAY CONDITIONAL STOP

(Form Y Train Order)

The following forms of oral authorization by the Foreman and acknowledgment of understanding by the engineer are to be used to permit trains to pass a red flag without stopping within the limits of a Form Y train order.

Foreman will state: "Burlington Northern Railway Foreman calling Extra 232 East about Order No. (Form Y Train Order No.)"

Engineer must respond, identifying his train as: "This is Burlington Northern engineer, Extra 232 East."

When engineer has answered as above, the foreman will state: "Extra 232 East may pass red signal at (Location) without stopping."

The foreman may also authorize a different speed from that shown in the Form Y train order by adding to his instructions: "Proceed at _____ MPH," or "Proceed at normal speed."

The engineer must repeat back to the foreman the instructions that are given him.