

MONTANA DIVISION

J. D. YEAGER—Division Superintendent, Havre

| | | |
|-----------------|---------------------------------|-------------|
| J. W. DUFFY | Asst. Supt. Transportation | Havre |
| W. C. BUSH | Asst. Supt. Administration | Havre |
| E. C. GALLAGHER | Asst. Supt. Roadway Maintenance | Havre |
| R. A. MORELLI | Chief Dispatcher | Havre |
| J. L. REINKE | Chief Dispatcher | Minot |
| E. J. BEIL | Trainmaster | Great Falls |
| L. D. HUNTER | Trainmaster | Glasgow |
| J. Z. ALBINGER | Trainmaster | Whitefish |
| W. R. WALTERS | Trainmaster | Havre |
| H. M. AULL | Trainmaster | Havre |
| T. G. ROSS | Road Foreman | Glasgow |
| D. L. SCHUCH | Road Foreman | Great Falls |
| J. L. KIME | Road Foreman | Whitefish |
| R. L. REED | Road Foreman | Havre |
| E. L. HENCZ | Road Foreman | Havre |

YELLOWSTONE DIVISION

J. R. REYNOLDS—Division Superintendent, Glendive

| | | |
|------------------|---------------------------------|-------------|
| M. C. NYBERG | Asst. Supt. Transportation | Glendive |
| E. J. THOMAS | Asst. Supt. Administration | Glendive |
| M. W. PLOTT | Asst. Supt. Roadway Maintenance | Glendive |
| R. E. SCHULTZ | Chief Dispatcher | Glendive |
| W. L. WATLAND | Regional Chief Dispatcher | Minneapolis |
| G. W. HARPER | Terminal Manager | Laurel |
| R. W. WARD | Trainmaster | Laurel |
| D. M. NORTHUP | Trainmaster | Laurel |
| P. R. ALAMAN | Asst. Trainmaster | Laurel |
| J. A. MARTIN | Trainmaster | Mandan |
| M. W. SANDAL | Asst. Trainmaster | Mandan |
| D. M. WILEY | Trainmaster | Glendive |
| A. W. MYDLAND | Trainmaster | Forsyth |
| M. A. BACIGALUPO | Asst. Trainmaster | Forsyth |
| G. A. NEWELL | Trainmaster | Sheridan |
| | Asst. Trainmaster | Sheridan |
| S. L. McLAUGHLIN | Trainmaster-Road Foreman | Dickinson |
| M. J. KOSANDA | Road Foreman | Glendive |
| D. D. HALL | Road Foreman | Forsyth |
| A. P. HUSCHKA | Road Foreman | Sheridan |
| | Trainmaster | Hettinger |

ROCKY MOUNTAIN DIVISION

G. E. THIEL—Division Superintendent, Missoula

| | | |
|-----------------|---------------------------------|------------|
| C. J. FERDERER | Asst. Supt. Transportation | Missoula |
| T. A. JONES | Asst. Supt. Administration | Missoula |
| N. J. NIMEY | Asst. Supt. Roadway Maintenance | Missoula |
| C. C. STENGEM | Chief Dispatcher | Missoula |
| R. E. SCHULTZ | Chief Dispatcher | Glendive |
| S. G. BUNTIN | Chief Dispatcher | Spokane |
| J. L. GREWELL | Trainmaster | Greybull |
| D. C. DAVIS | Trainmaster | Livingston |
| J. H. GRUNDMANN | Trainmaster | Helena |
| G. W. HOVE | Trainmaster-Road Foreman | Missoula |
| A. M. RIO | Trainmaster | Missoula |
| J. W. ROBINSON | Asst. Trainmaster | Missoula |
| | Road Foreman | Helena |
| R. K. FREY | Road Foreman | Livingston |
| J. F. WHITE | Road Foreman | Greybull |

BURLINGTON NORTHERN RAILROAD CO. BILLINGS REGION

**MONTANA, YELLOWSTONE AND
ROCKY MOUNTAIN DIVISIONS**

TIME TABLE 31

INCORPORATION COMMISSION

APR 25 1982

RATE SECTION

V.L.W.

To be used in conjunction with
Special Instructions currently in effect

IN EFFECT AT 12:01 A.M.

CENTRAL STANDARD TIME BISMARCK-MANDAN

**MOUNTAIN STANDARD TIME
MANDAN-PARADISE WILLISTON-CONKELLEY
GILLETTE-HUNTLEY MOBRIDGE-TERRY
CASPER-LAUREL**

PACIFIC STANDARD TIME PARADISE-KOOTENAI

Sunday, April 25, 1982

Including National Railroad Passenger Corporation (NRP) Trains

Vice President
Transportation
T. C. WHITACRE

Vice President
General Manager
W. A. THOMPSON

MONTANA DIVN — 1st SUBDIVN

| WESTWARD ↓ | Rule (A) Signs | Length of Sidings in Feet | Station Numbers | FIRST CLASS | Line Segment | Mile Post Location | Distance From Williston | MAIN LINE STATIONS Office Calls | FIRST CLASS | EASTWARD ↑ |
|------------|----------------|---------------------------|-----------------|-------------|--------------|--------------------|-------------------------|------------------------------------|-------------|------------|
| | | | | 7 | | | | | 8 | |
| | | | | NRPC | | | | | NRPC | |
| | | | | Daily | | | | | Daily | |
| | | | | | | | | | | |
| | | | | 9:57 | | 0.0 | WN | WILLISTON | | A 4:40 |
| | 15,021 | 01049 | | | | 133.2 | 12.0 | ON | TRENTON | |
| JT | 12,267 | 01063 | | | | 147.2 | 25.9 | | SNOWDEN | |
| JKT | 8,552 | 01075 | | 10:28 | | 159.2 | 37.9 | B | BAINVILLE | 3:54 |
| | 8,437 | 01089 | | | | 173.5 | 52.2 | CU | CULBERTSON | |
| | 8,430 | 01095 | | | | 179.1 | 57.7 | | BLAIR | |
| | 12,990 | 01108 | | 10:50 | | 192.8 | 71.4 | | BROCKTON | 3:23 |
| | 8,422 | 01123 | | | | 206.8 | 86.4 | PO | POPLAR | |
| | 8,424 | 01136 | | | | 222.1 | 100.8 | | MACON | |
| | 14,025 | 01144 | | S 11:25 | | 227.3 | 106.6 | WO | WOLF POINT | S 2:55 |
| | 8,422 | 01155 | | | | 239.2 | 117.9 | | OSWEGO | |
| | 6,322 | 01162 | | | | 246.7 | 125.2 | | FRAZER | |
| | 8,495 | 01167 | | | | 251.8 | 130.3 | | KINTYRE | |
| | 8,431 | 01179 | | | | 263.2 | 141.7 | | NASHUA | |
| BKRT | 11,700 | 01192 | | S 12:10PM | 35 | 277.5 | 156.2 | GW | GLASGOW | S 2:09 |
| | 8,431 | 01205 | | | | 289.4 | 168.0 | | TAMPICO | |
| | 13,183 | 01219 | | | | 303.5 | 182.1 | | HINSDALE | |
| J | 10,189 | 01232 | | | | 316.2 | 194.8 | | SACO | |
| | 8,000 | 01245 | | | | 330.7 | 208.5 | | BOWDON | |
| | 8,418 | 01259 | | S 1:10 | | 343.3 | 221.8 | MF | MALTA | S 1:08 |
| | 10,389 | 01265 | | | | 352.8 | 231.4 | | WAGNER | |
| | 7,264 | 01276 | | | | 360.7 | 239.3 | | DODSON | |
| | 8,456 | 01291 | | | | 376.0 | 254.6 | | SAVOY | |
| | 7,463 | 01303 | | 1:45 | | 387.8 | 266.4 | HM | HARLEM | 12:26PM |
| | 10,302 | 01315 | | | | 399.6 | 278.2 | | ZURICH | |
| T | 7,525 | 01324 | | | | 408.8 | 287.5 | CK | CHINOOK | |
| | 10,109 | 01332 | | | | 416.7 | 295.6 | | LOHMAN | |
| BKRTX | | 01345 | | A S 2:30PM | | 439.4 | 309.2 | HV | HAVRE | 11:55AM |

EXCEPT IN CTC TERRITORY, WHEN IN SERVICE, EASTWARD TRAINS ARE SUPERIOR TO WESTWARD TRAINS OF THE SAME CLASS.

BN Radio Channel No. 1 in service on this Subdivision.

MONTANA DIVN — 2nd SUBDIVN

| WESTWARD ↓ | Rule (A) Signs | Length of Sidings in Feet | Station Numbers | FIRST CLASS | | Line Segment | Mile Post Location | Distance From Hours | MAIN LINE | | STATIONS | | FIRST CLASS | | ↑ EASTWARD |
|------------|----------------|---------------------------|-----------------|-------------|------|--------------|--------------------|---------------------|--------------|----|--------------|--------|-------------|---------|------------|
| | | | | 7 | NWPC | | | | Office Calls | 8 | NWPC | Daily | Daily | | |
| | | | | | | | | | | | | | | Daily | |
| | BKRTX | | 01345 | 2:45PM | | 35 | 430.4 | 0.0 | 2 MT | EV | HAVRE | | A | 11:40AM | |
| | JT | | 01360 | | | | 434.0 | 4.0 | | | PACIFIC JCT. | | | | |
| | | 8,431 | 01366 | | | | 964.0 | | | | 57 | | | | |
| | | 8,574 | 01365 | 3:02 | | | 970.9 | 9.7 | | | BURNHAM | | | | |
| | | 8,577 | 01375 | | | | 980.1 | 19.3 | KN | | KREMLIN | | 11:00 | | |
| | | | 01361 | | | | 980.7 | 29.4 | GR | | GILDFORD | | | | |
| | | 8,579 | 01387 | | | | 996.8 | 36.3 | HG | | HIGHAM | | | | |
| | | | 01394 | | | | 1002.7 | 41.3 | RU | | RUDYARD | | | | |
| | | | 01397 | | | | 1009.0 | 47.5 | RN | | INVERNESS | CTC | | | |
| | | 7,221 | 01400 | | | | 1012.8 | 51.3 | JO | | JOPLIN | | | | |
| | | 8,552 | 01407 | 3:33 | | | 1015.8 | 54.3 | | | BUELOW | | | | |
| | | 8,586 | 01420 | | | | 1022.9 | 61.4 | CH | | CHESTER | | 10:27 | | |
| | | | 01428 | | | | 1036.6 | 74.5 | | | LOTHAIR | | | | |
| | | 8,556 | 01432 | | | | 1041.7 | 80.5 | | | GALATA | | | | |
| | | 9,062 | 01441 | | | | 1047.6 | 86.5 | | | DEVON | | | | |
| | BJKRT. | | 01451 | S 4:22 | | | 1056.3 | 96.1 | | | DUNKIRK | | | | |
| | XJ | | | | | | 1065.4 | 104.6 | 2 MT | SJ | SHELBY | | S | 9:47 | |
| | X | | 01464 | | | | 1068.4 | 107.3 | | | TETON | | | | |
| | BKRY | 12,150 | 01475 | S 4:50 | | 36 | 1078.7 | 117.6 | Rule 251-254 | | ETHRIDGE | ABS DT | | | |
| | T | E5,314 W6,255 | 01501 | | | | 1090.1 | 128.8 | CT | | CUT BANK | | S | 9:18 | |
| | | 12,183 | 01508 | 5:23 | | | 1116.2 | 155.0 | | | BLACKFOOT | | | | |
| | | 9,165 | 01517 | | | | 1123.9 | 162.3 | BG | | BROWNING | | 8:47 | | |
| | T | 4,631 | 01522 | 5:45 | | | 1133.5 | 171.3 | | | SPOTTED NOSE | | | | |
| | | 9,536 | 01525 | | | | 1138.1 | 175.7 | MD | | GLACIER PARK | CTC | 8:25 | | |
| | | | 01534 | 6:00 | | | 1144.0 | 181.0 | | | BISON | | | | |
| | XT | | | | | | 1149.8 | 187.3 | 2 MT | SM | SUMMIT | | 8:05 | | |
| | X | | 01540 | | | | 1151.8 | 189.3 | | | MARIAS | | | | |
| | I | | 01548 | 6:30 | | | 1157.6 | 194.3 | | | BLACKTAIL | | | | |
| | KTKY | E6,631 W6,998 | 01552 | 6:36 | | | 1165.2 | 201.6 | Rule 251-254 | | JAVA | ABS DT | | | |
| | | | 01558 | | | | 1169.1 | 205.5 | SI | | ESSEX | | 7:30 | | |
| | | | | | | | 1173.2 | 209.6 | 251-254 | | PINNACLE | ABS | | | |
| | | | | | | | 1177.6 | 213.9 | 251-254 | | PAOLA | ABS DT | | | |
| | TX | | 01568 | | | | 1185.2 | 221.4 | | | RED EAGLE | | | | |
| | | | | | | | 1188.0 | 224.2 | 2 MT | | NYACK | | | | |
| | | 10,232 | 01578 | S 7:32 | | | 1196.1 | 231.9 | BE | | BELTON | CTC | S | 6:51 | |
| | | 11,157 | 01586 | | | | 1204.9 | 239.8 | | | CORAM | | | | |
| | | | 01590 | 8:00PM | | | 1208.3 | 244.2 | | | CONKELLY | | | 6:31AM | |

EXCEPT ON DOUBLE TRACK OR IN CTC TERRITORY, OR RULE 251 TERRITORY, WHEN IN SERVICE, EASTWARD TRAINS ARE SUPERIOR TO WESTWARD TRAINS OF THE SAME CLASS.

Interlocking limits at Java extend from MP 1165.2 to MP 1165.9.
BN Radio channel No. 1 in service on this Subdivision.

4 MONTANA DIVN — 3rd Subdivn

| RULE (A) Signs | Length of Sidings in Feet | Station Numbers | Line Segment | Mile Post Location | Distance From Pacific Jct. | MAIN LINE STATIONS | |
|----------------|---------------------------|-----------------|--------------|--------------------|----------------------------|--------------------|-------------|
| | | | | | | Office | Code |
| JT | | 01350 | 353 | 0.0 | 0.0 | PACIFIC JCT. | |
| | 2,713 | 11011 | | 10.8 | 10.9 | LAREDO | |
| | 4,873 | 11021 | | 20.6 | 20.7 | BOX ELDER | |
| | 4,849 | 11032 | | 31.2 | 31.5 | BS | BIG SANDY |
| | 4,152 | 11045 | | 45.3 | 45.4 | VIRGELLE | |
| | 4,634 | 11062 | | 62.1 | 62.2 | OQ | CHAPPELL |
| | 4,822 | 11075 | | 74.6 | 74.7 | BN | FORT BENTON |
| | 4,054 | 11090 | | 90.3 | 90.4 | CA | CARTER |
| | 4,546 | 11103 | | 102.9 | 103.0 | RE | PORTAGE |
| | 5,334 | 11109 | | 108.1 | 108.6 | SHEFFELS | |
| BJK RTY | | 32777 | | 119.4 | 119.3 | PD | GREAT FALLS |

MONTANA DIVN — 4th Subdivn

| RULE (A) Signs | Length of Sidings in Feet | Station Numbers | Line Segment | Mile Post Location | Distance From Great Falls | MAIN LINE STATIONS | | |
|----------------|---------------------------|-----------------|--------------|--------------------|---------------------------|--------------------|-------------|--------|
| | | | | | | Office | Code | |
| BJK RTY | | 32777 | 354 | 0.9 | 0.0 | PD | GREAT FALLS | |
| Y | | | | 3.8 | 2.9 | EMERSON JCT. | | |
| JRY | 8,541 | 32788 | | 12.3 | 11.3 | VAUGHN | | |
| JRTY | 6,455 | 32802 | | 26.6 | 25.3 | PO | POWER | |
| | 6,358 | 32813 | | 37.3 | 35.9 | DU | DUTTON | |
| | 3,018 | 32820 | | 45.3 | 43.9 | COLLINS | | |
| | 5,115 | 32830 | | 55.2 | 53.3 | BA | BRADY | |
| TY | 8,970 | 32843 | | 68.6 | 66.7 | RD | CONRAD | |
| JR | | 32847 | | 71.8 | 69.9 | VALERIE JCT. | | |
| | 6,890 | 32854 | | 79.5 | 77.5 | FA | LEDGER | |
| | 2,962 | 32859 | | 84.1 | 82.2 | FOWLER | | |
| | 6,387 | 32866 | | 90.8 | 88.7 | NAISMITH | | |
| BJK RTY | | 01451 | | 100.0 | 96.0 | 2 MT | SJ | SHELBY |
| | 3,818 | 61217 | | 120.1 | 117.7 | KEVIN | | |
| | | 61228 | | 130.6 | 128.1 | SUNBURST | | |
| KRTY | 1,500 | 61236 | | 138.9 | 136.5 | G | SWEET GRASS | |

Between Shelby and Teton trains operate on Second Subdivision.

MONTANA DIVN — 5th Subdivn

| RULE (A) Signs | Length of Sidings in Feet | Station Numbers | Line Segment | Mile Post Location | Distance From Hoop Main | MAIN LINE STATIONS | |
|----------------|---------------------------|-----------------|--------------|--------------------|-------------------------|--------------------|-----------|
| | | | | | | Office | Code |
| JTY | | 30853 | 362 | 0.0 | 0.0 | MOSSMAN | |
| JRY | | 32557 | | 4.2 | 4.0 | HESPER | |
| | | 32563 | | 9.5 | 9.3 | RIMROCK | |
| | 6,400 | 32590 | | 36.5 | 36.3 | BW | BROADVIEW |
| | 6,442 | 32609 | | 56.1 | 55.9 | CUSHMAN | |
| | 6,399 | 32635 | | 81.8 | 81.6 | HEDGESVILLE | |
| | 6,854 | 32655 | | 102.1 | 101.9 | JUDITH GAP | |
| | | 32668 | | 114.4 | 114.2 | BUFFALO | |
| | 3,246 | 32683 | | 129.8 | 129.6 | HOBSON | |
| JRTY | 6,196 | 32688 | | 135.1 | 135.0 | MOCCASIN | |
| | | 32694 | | 140.5 | 140.4 | BENCHLAND | |
| | | 32700 | | 146.7 | 146.5 | WINDHAM | |
| | 3,182 | 32707 | | 163.9 | 163.7 | SD | STANFORD |
| | 2,671 | 32724 | | 170.7 | 170.6 | GEYSER | |
| | 2,670 | 32736 | | 183.1 | 183.0 | RAYNESFORD | |
| | 6,743 | 32748 | | 194.4 | 194.2 | ARMINGTON | |
| | | 32750 | 196.3 | 196.2 | B | BELT | |
| | 2,618 | 32766 | 212.8 | 212.7 | GERBER | | |
| BJK RTY | | 32777 | 224.5 | 222.7 | PD | GREAT FALLS | |

MONTANA DIVN — 6th Subdivn

| RULE (A) Signs | Length of Sidings in Feet | Station Numbers | Line Segment | Mile Post Location | Distance From Bainville | BRANCH LINE STATIONS | |
|----------------|---------------------------|-----------------|--------------|--------------------|-------------------------|----------------------|-----------|
| | | | | | | Office | Code |
| JKRT | | 01075 | 355 | 0.7 | 0.0 | B | BAINVILLE |
| | | 59009 | | 10.2 | 10.6 | McCABE | |
| | | 59018 | | 19.1 | 19.3 | FROID | |
| | | 59024 | | 25.9 | 25.6 | HOMESTEAD | |
| | | 59030 | | 32.0 | 31.6 | MEDICINE LAKE | |
| | | 59038 | | 39.7 | 39.1 | RESERVE | |
| | | 59044 | | 46.2 | 45.4 | ANTELOPE | |
| KRY | 2,097 | 59052 | | 54.4 | 53.4 | PLENTYWOOD | |
| | | 59072 | | 74.5 | 73.4 | REDSTONE | |
| | | 59084 | | 86.4 | 85.4 | FLAXVILLE | |
| KY | 1,947 | 59097 | | 99.0 | 98.0 | SCOBEE | |
| | | 59105 | | 107.5 | 106.5 | FOUR BUTTES | |
| | | 59117 | | 119.1 | 118.0 | PEERLESS | |
| | | 59128 | | 130.6 | 129.5 | RICHLAND | |
| | | 59138 | | 140.4 | 139.4 | GLENTANA | |
| BKRT | | 59145 | | 148.0 | 146.6 | OPHEIM | |

BN Radio Channel No. 1 in service on these Subdivisions.

MONTANA DIVN — 7th Subdivn

MONTANA DIVN — 12th Subdivn

5

| RULE (A) Signs | Length of Sidings in Feet | Station Numbers | Line Segment | Mile Post Location | Distance From See | BRANCH LINE STATIONS Office Calls |
|----------------|---------------------------|-----------------|--------------|--------------------|-------------------|--------------------------------------|
| J | | 01232 | 356 | 0.0 | 0.0 | SACO 87 |
| | 1,997 | 61107 | | 6.9 | 8.7 | COLE 65 |
| | | 61113 | | 13.4 | 15.3 | TATTMALL 105 |
| | | 61124 | | 24.0 | 25.9 | WHITEWATER 123 |
| | | 61137 | | 37.0 | 38.8 | LORONG 135 |
| | | 61152 | | 52.3 | 54.3 | CHAPMAN 123 |
| | | 61165 | | 65.3 | 67.1 | TURNER 132 |
| T | | 61177 | | 77.5 | 79.3 | HOGBLAND |

| RULE (A) Signs | Length of Sidings in Feet | Station Numbers | Line Segment | Mile Post Location | Distance From Heeper | BRANCH LINE STATIONS Office Calls |
|----------------|---------------------------|-----------------|--------------|--------------------|----------------------|--------------------------------------|
| JRY | | 32557 | 363 | 0.0 | 0.0 | HESPER 19.9 |
| | 2,526 | 66220 | | 19.9 | 19.9 | MOLT 7.8 |
| | 1,851 | 66228 | | 27.7 | 27.7 | WHEAT BASIN 10.8 |
| RT | 1,731 | 66238 | | 38.2 | 38.2 | RAPELJE |

MONTANA DIVN — 8th Subdivn

MONTANA DIVN — 13th Subdivn

| RULE (A) Signs | Length of Sidings in Feet | Station Numbers | Line Segment | Mile Post Location | Distance From Vaughn | BRANCH LINE STATIONS Office Calls |
|----------------|---------------------------|-----------------|--------------|--------------------|----------------------|--------------------------------------|
| JRY | | 32788 | 359 | 0.0 | 0.0 | VAUGHN 57 |
| | | 61406 | | 5.8 | 5.7 | DRACUT JCT. |

| RULE (A) Signs | Length of Sidings in Feet | Station Numbers | Line Segment | Mile Post Location | Distance From Lewistown | BRANCH LINE STATIONS Office Calls |
|----------------|---------------------------|-----------------|--------------|--------------------|-------------------------|--------------------------------------|
| JRTY | | 61331 | 364 | 63.0 | 0.0 | WN LEWISTOWN 8.0 |
| | | 61322 | | 70.0 | 8.0 | HANOVER 1.2 |
| JR | | 61321 | 368 | 71.0 | 9.2 | SPRING CREEK JCT 3.0 |
| | 2197 | 61815 | | 74.0 | 12.2 | AMHERST 6.5 |
| | 2276 | 61822 | | 80.5 | 18.7 | DANVERS 14.7 |
| | 2950 | 61837 | | 95.2 | 33.4 | DN DENTON 10.9 |
| | 2293 | 61848 | | 106.1 | 44.3 | ARROW CREEK 11.1 |
| T | 2342 | 61859 | | 117.2 | 55.4 | POWNAI 12.1 |
| | 2651 | 61870 | | 129.3 | 67.5 | SQUARE BUTTE 7.0 |
| | 3105 | 61878 | | 136.3 | 74.5 | GE GERALDINE |

MONTANA DIVN — 9th Subdivn

MONTANA DIVN — 14th Subdivn

| RULE (A) Signs | Length of Sidings in Feet | Station Numbers | Line Segment | Mile Post Location | Distance From Power | BRANCH LINE STATIONS Office Calls |
|----------------|---------------------------|-----------------|--------------|--------------------|---------------------|--------------------------------------|
| JRTY | | 32802 | 360 | 0.0 | 0.0 | PO POWER 21.3 |
| R | | 61521 | | 21.1 | 21.2 | EASTHAM JCT. 65 |
| R | | 61526 | 369 | 251.2 | 27.8 | CHOTEAU JCT. 67 |
| M | | 61529 | | 28.5 | 28.7 | CO CHOTEAU 227 |
| T | | 61551 | 360 | 51.3 | 51.4 | PENDROY |

| RULE (A) Signs | Length of Sidings in Feet | Station Numbers | Line Segment | Mile Post Location | Distance From Heath | BRANCH LINE STATIONS Office Calls |
|----------------|---------------------------|-----------------|--------------|--------------------|---------------------|--------------------------------------|
| | | 61340 | 370 | 10.4 | 0.0 | HEATH 1.9 |
| | | 61338 | | 8.5 | 1.9 | DUNLAP 8.6 |
| JRTY | | 61331 | | 63.0 | 10.5 | WN LEWISTOWN |

MONTANA DIVN — 10th Subdivn

MONTANA DIVN — 15th Subdivn

| RULE (A) Signs | Length of Sidings in Feet | Station Numbers | Line Segment | Mile Post Location | Distance From Valier Jct. | BRANCH LINE STATIONS Office Calls |
|----------------|---------------------------|-----------------|--------------|--------------------|---------------------------|--------------------------------------|
| JR | | 32847 | 361 | 0.0 | 0.0 | VALIER JCT. 173 |
| | | 61717 | | 17.2 | 17.3 | VALIER |

| RULE (A) Signs | Length of Sidings in Feet | Station Numbers | Line Segment | Mile Post Location | Distance From Moore | BRANCH LINE STATIONS Office Calls |
|----------------|---------------------------|-----------------|--------------|--------------------|---------------------|--------------------------------------|
| | | 61368 | 368 | 43.4 | 0.0 | MOORE 9.5 |
| | 1270 | 61368 | | 53.0 | 9.6 | GLENGARRY 8.0 |
| JRTY | | 61331 | | 63.0 | 17.6 | WN LEWISTOWN |

MONTANA DIVN — 11th Subdivn

| RULE (A) Signs | Length of Sidings in Feet | Station Numbers | Line Segment | Mile Post Location | Distance From Spring Creek Jct. | BRANCH LINE STATIONS Office Calls |
|----------------|---------------------------|-----------------|--------------|--------------------|---------------------------------|--------------------------------------|
| JR | | 61321 | 364 | 21.4 | 0.0 | SPRING CREEK JCT. 14.0 |
| | | 61308 | | 7.3 | 14.0 | KOLIN 7.5 |
| JRTY | | 32688 | | 0.0 | 21.5 | MOCCABIN |

BN Radio Channel No. 1 in service on these Subdivisions.

**MONTANA DIVISION
LINE SEGMENT NUMBERS**

| YARD LINE SEGMENTS | | BALLAST PITTS | | OTHER ROAD LINE SEGMENTS | | |
|--------------------|-------------------|---------------|----------|--------------------------|-------------------------|----------------|
| Line Segment | Yard | Line Segment | Yard | Line Segment | Limits | Mileposts |
| 700 | Williston | 705 | Stanford | | | |
| 701 | Havre | 706 | Essex | 358 | Brazil Creek Spur | 0.0 to 18.3 |
| 702 | Havre Diesel Shop | 708 | Amherst | 365 | Lavin Spur..... | 0.0 to 4.4 |
| 703 | Great Falls | | | 369 | Fairfield Spur | 233.6 to 244.4 |
| 704 | Lewistown Yard | | | | | |

INDUSTRIAL TRACKS AND OTHER TRACKS NOT SHOWN AS STATIONS IN TIME TABLE

| NAME | LOCATION | Capacity in Cars | Switch Opens | NAME | LOCATION | Capacity in Cars | Switch Opens |
|--------------------------------------|------------------------------------|------------------|--------------|----------------------------------|-------------------------------------|------------------|--------------|
| First Subdivision | | | | Fifth Subdivision | | | |
| 01047 Phillips Petroleum..... | 2.5 miles east of Trenton..... | Yard | Both | 32561 Baseline..... | 2.0 miles east of Rimrock..... | 10 | West |
| 01063 Marley Beet Track..... | 3.9 miles west of Trenton..... | 47 | Both | 32875 Acton..... | 12.0 miles west of Rimrock..... | 18 | Both |
| 01068 Lakeland..... | 5.7 miles east of Snowden..... | 10 | West | 32581 Comanche..... | 8.5 miles east of Broadview..... | 30 | Both |
| 01116 Sprole..... | 6.5 miles east of Poplar..... | 44 | West | 32587 New Montana Spur..... | 3.1 miles east of Broadview..... | 30 | East |
| 01129 Chelsea..... | 6.8 miles west of Poplar..... | 19 | West | 32822 Franklin..... | 12.6 miles east of Hedgesville..... | 18 | Both |
| 01196 Brazil Creek..... | 3.9 miles west of Glasgow..... | Yard | East | 32848 Oxford..... | 6.8 miles east of Judith Gap..... | 10 | East |
| 01210 Vandalia (2 Tracks)..... | 8.7 miles east of Hinsdale..... | 100 | Both | 32754 Wayne..... | 4.9 miles west of Belt..... | 27 | Both |
| 01233 Saco Stock Yards..... | 1.7 miles west of Saco..... | 26 | Both | 32768 Fife..... | 7.0 miles west of Belt..... | 19 | Both |
| 01257 Malta Stock Yards..... | 2.0 miles east of Malta..... | 46 | Both | 32763 Bovey's Elevator Spur..... | 13.1 miles west of Belt..... | 16 | East |
| 01286 Coburg..... | 4.9 miles east of Savoy..... | 165 | Both | 32767 Lavin Spur..... | 0.1 mile west of Gerber..... | Yard | West |
| 01302 Harlem Stock Yards..... | 1.3 miles east of Harlem..... | 38 | Both | | | | |
| 01304 Harlem Beet Track..... | 0.7 mile west of Harlem..... | 36 | East | Sixth Subdivision | | | |
| Second Subdivision | | | | Ninth Subdivision | | | |
| 01361 Fresno..... | 5.2 miles west of Burnham..... | 15 | West | 59079 Navajo..... | 6.5 miles west of Redstone..... | 18 | Both |
| 01413 Tiber (2 Tracks)..... | 5.5 miles west of Chester..... | 135-32 | Both | 59069 Madoc..... | 7.4 miles east of Scobey..... | 24 | Both |
| 01470 Union Oil Spur (3 Tracks)..... | 4.6 miles east of Cut Bank..... | 8-11-17 | East | Tenth Subdivision | | | |
| 01484 Sundance Storage Track..... | 9.8 miles west of Cut Bank..... | 30 | Both | 61506 Cordova..... | 5.7 miles west of Power..... | 9 | Both |
| 01486 Pardue Sammons Spur..... | 10.4 miles west of Cut Bank..... | 11 | East | 61512 Cleiv..... | 17.3 miles west of Power..... | 23 | Both |
| 01495 Meriwether—storage track..... | 5.9 miles east of Blackfoot..... | 34 | e w trk | 61520 Plums Spur..... | 7.7 miles east of Choteau..... | 13 | East |
| 01555 Essex Pit..... | 2.9 miles west of Essex..... | 50 | East | 61525 Hobson Elevator Spur..... | 3.7 miles east of Choteau..... | 15 | West |
| Third Subdivision | | | | Eleventh Subdivision | | | |
| 11056 Lippard..... | 5.9 miles east of Chappell..... | 20 | West | 61536 Koyle Spur..... | 7.8 miles west of Choteau..... | 7 | East |
| 11090 Karshaw..... | 5.0 miles west of Fort Benton..... | 61 | Both | 61542 Bynum..... | 13.7 miles west of Choteau..... | 34 | Both |
| 11085 Tunis..... | 5.6 miles east of Carter..... | 8 | West | 61585 Fairfield..... | 10.2 miles from Eastham Jct..... | 45 | Both |
| 11095 Flowerree..... | 7.5 miles east of Portage..... | 37 | Both | Twelfth Subdivision | | | |
| Fourth Subdivision | | | | Thirteenth Subdivision | | | |
| 32784 Manchester..... | 3.9 miles west of Emerson Jct..... | 7 | East | 61818 Ware..... | 3.7 miles west of Amherst..... | 20 | Both |
| 32617 Acme..... | 3.9 miles west of Dutton..... | 9 | East | 61830 Hoosac..... | 8.3 miles west of Danvers..... | 22 | East |
| | | | | 61843 Coffee Creek..... | 6.4 miles west of Denton..... | 32 | Both |

**FREIGHT TRAIN SCHEDULES
(For Information Only)**

| Train No. | WILLISTON | | GLASGOW | | HAVRE | | WHITEFISH |
|------------|-----------|---------|---------|--------|---------|---------|-----------|
| | Leave | Arrive | Leave | Arrive | Leave | Arrive | Arrive |
| BPX | 9:30AM | 12:35PM | 12:40PM | 4:25PM | 5:25PM | 12:50AM | |
| 3 | 1:05PM | 4:00PM | 4:05PM | 6:55PM | 7:35PM | 2:30AM | |
| 23 | 10:20PM | 1:30AM | 1:35AM | 4:30AM | 5:15AM | 12:20PM | |
| 57 | 7:30PM | 11:55PM | 12:15AM | 4:55AM | 8:00AM | 6:30PM | |
| 73 | 12:15AM | 3:45AM | 3:55AM | 8:05AM | 9:15AM | 5:45PM | |
| 79 | 6:20PM | 10:45PM | 11:00PM | 3:30AM | 5:30AM | 4:00PM | |
| 83 | 2:30AM | 7:30AM | 8:30AM | 2:30PM | 7:30PM | 6:15AM | |
| 89 | 2:15AM | 5:35AM | 5:45AM | 9:35AM | 11:05AM | 6:45PM | |
| 97 | 2:30PM | 5:40PM | 5:45PM | 9:25PM | 10:25PM | 5:40AM | |

| Train No. | WHITEFISH | HAVRE | | GLASGOW | | WILLISTON |
|------------|-----------|---------|---------|---------|---------|-----------|
| | Leave | Arrive | Leave | Arrive | Leave | Arrive |
| PBF | 10:50PM | 5:50AM | 6:50AM | 10:05AM | 10:10AM | 2:05PM |
| 4 | 10:25PM | 5:05AM | 6:35AM | 9:50AM | 9:55AM | 1:55PM |
| 82 | 7:35PM | 2:45AM | 4:00AM | 7:10AM | 7:15AM | 11:15AM |
| 84 | 10:15AM | 7:15PM | 9:45PM | 2:00AM | 2:05AM | 6:00AM |
| 88 | 9:15AM | 6:15PM | 8:15PM | 12:20AM | 12:25AM | 4:15AM |
| 90 | 2:30AM | 10:00AM | 11:30AM | 3:15PM | 3:20PM | 6:55PM |
| 182 | 8:30PM | 3:40AM | 4:55AM | 8:05AM | 8:10AM | 12:10PM |

YELLOWSTONE DIVISION — 1st Subdivn

YELLOWSTONE DIVN — 2nd Subdivn

| WESTWARD ↓ | RULE (A) Signs | Length of Sidings in Feet | Station Numbers | Line Segment | Mile Post Location | Distance From Benchmark | MAIN LINE STATIONS | | Office Calls | EASTWARD ↑ |
|------------|--------------------------|---------------------------|-----------------|--------------|--------------------|-------------------------|--------------------|---------|--------------|------------|
| | | | | | | | Station | Station | | |
| | | | | | 0.0 | 5.8 | MANDAN | | | |
| | | | | | 3.1 | 8.8 | SUNNY | | | |
| Y | | 6,403 | 03451 | | 8.3 | 14.3 | LYONS | | | |
| | | 5,561 | 03458 | | 15.3 | 20.9 | SWEET BRIAR | | | |
| | | 6,272 | 03471 | | 27.9 | 33.6 | NS NEW SALEM | | | |
| | | 6,252 | 03481 | | 38.7 | 44.3 | DENGATE | | | |
| | W 6,465 E 5,170 | | 03491 | | 57.5 | 53.9 | GN GLEN ULLIN | | | |
| | | 6,167 | 03496 | | 63.6 | 59.4 | EAGLE NEST | | | |
| | | 6,099 | 03504 | | 70.1 | 66.5 | H HEBRON | | | |
| | | 8,600 | 03513 | | 79.2 | 75.6 | ANTELOPE | | | |
| | | 6,103 | 03518 | | 86.0 | 81.4 | RH RICHARDTON | | | |
| | | 6,083 | 03524 | | 90.5 | 86.9 | TR TAYLOR | | | |
| | | 6,260 | 03529 | | 95.4 | 91.9 | BOYLE | | | |
| | | 2,941 | 03532 | | 98.2 | 94.6 | GLADSTONE | | | |
| | | 7,498 | 03538 | | 104.9 | 101.3 | LEHIGH | | | |
| BKRTY | | | 03543 | 39 | 109.5 | 105.9 | DX DICKINSON | ABS | | |
| | | 6,096 | 03548 | | 114.0 | 110.4 | ELAND | | | |
| | | 6,048 | 03553 | | 119.5 | 115.9 | RD SOUTH HEART | | | |
| | | 4,883 | 03563 | | 129.8 | 126.2 | BD BELFIELD | | | |
| | | 10,300 | 03569 | | 135.5 | 131.9 | FRYBURG | | | |
| | | 10,065 | 03574 | | 141.0 | 137.2 | SULLY SPRINGS | | | |
| | | 5,895 | 03582 | | 149.2 | 145.4 | MEDORA | | | |
| | | 8,121 | 03588 | | 155.0 | 150.9 | RIDER | | | |
| | | 4,873 | 03599 | | 165.8 | 161.8 | SENTINEL BUTTE | | | |
| JT | | 11,564 | 03607 | | 174.2 | 170.2 | B BEACH | | | |
| | | 6,097 | 03613 | | 179.8 | 175.9 | YATES | | | |
| | | | 03618 | | 184.7 | 180.8 | WB WISBAUX | | | |
| | | 6,827 | 03621 | | 188.4 | 184.4 | BEAVER HILL | | | |
| | | 7,000 | 03628 | | 195.5 | 191.2 | HODGES | | | |
| | | 5,964 | 03634 | | 200.5 | 196.1 | IOWA | | | |
| | | 6,264 | 03644 | | 210.1 | 205.9 | CURRY | | | |
| BJK RTY | | | 03649 | | 215.8 | 211.3 | GI GLENDIVE | | | |

| WESTWARD ↓ | RULE (A) Signs | Length of Sidings in Feet | Station Numbers | Line Segment | Mile Post Location | Distance From Glen-dive | MAIN LINE STATIONS | | Office Calls | EASTWARD ↑ |
|------------|--------------------------|---------------------------|-----------------|--------------|--------------------|-------------------------|--------------------|---------|--------------|--------------------|
| | | | | | | | Station | Station | | |
| | B KRTY | | 03649 | | 0.0 | 0.0 | GI GLENDIVE | | | |
| | | 6,362 | 03656 | | 7.2 | 7.2 | COLGATE | | | |
| | | 5,764 | 03663 | | 14.8 | 14.8 | HOYT | | | |
| | | 7,117 | 03668 | | 19.4 | 19.5 | MARSH | | | |
| | | 6,272 | 03678 | | 29.6 | 29.6 | FN FALLON | | | |
| | W 6,262 E 6,358 | | 03688 | | 39.2 | 39.2 | TY TERRY | | | |
| | | 6,992 | 03696 | | 49.3 | 49.4 | BLATCHFORD | | | |
| | | 6,901 | 03701 | | 52.8 | 52.8 | BENZ | | | ABS |
| | | 6,382 | 03708 | | 59.9 | 59.7 | SHIRLEY | | | |
| | | 6,309 | 03718 | | 69.8 | 69.8 | TUSLER | | | |
| | | 6,162 | 03723 | | 74.5 | 74.5 | MURN | | | |
| Y | | 5,588 | 03727 | | 78.6 | 78.6 | MC MILES CITY | | | |
| | | 6,284 | 03733 | | 84.1 | 84.1 | ULMER | | | |
| | | 6,306 | 03738 | | 90.4 | 90.3 | HORTON | | | |
| | | 6,165 | 03747 | | 98.7 | 98.7 | HATHAWAY | | | |
| | | 4,393 | 03754 | | 104.8 | 104.9 | JOPPA | | | |
| | | 7,081 | 03760 | | 111.3 | 111.3 | ROSEBUD | | | |
| | | 6,258 | 03765 | | 116.4 | 116.4 | FLYNN | | | |
| BKR TY | | | 03772 | 40 | 123.8 | 123.7 | FY FORTYTH | | | |
| JT | | | 03778 | | 129.7 | 129.3 | NICHOLS WYE | | | CTC |
| JT | | 6,272 | 03779 | | 130.2 | 129.6 | NICHOLS | | | |
| | | 11,860 | 03787 | | 138.5 | 138.4 | FINCH | | | |
| J | | | 30795 | | 146.6 | 146.5 | SARPY JCT. | | | |
| | | 6,612 | 03800 | | 151.2 | 151.1 | HY HYSHAM | | | |
| | | 6,245 | 03805 | | 156.5 | 156.4 | MYERS | | | |
| | | 6,127 | 03815 | | 166.6 | 166.5 | BIG HORN | | | |
| | W 7,019 E 6,284 | | 03821 | | 172.3 | 172.2 | CUSTER | | | |
| | | 6,375 | 03829 | | 180.8 | 180.7 | WACO | | | ABS |
| | | 6,195 | 03838 | | 189.0 | 188.9 | BULL MOUNTAIN | | | |
| | | 6,313 | 03843 | | 194.2 | 194.0 | POMPEY'S PILLAR | | | |
| | | 4,876 | 03848 | | 199.4 | 199.1 | NEWTON | | | |
| | | 6,235 | 03853 | | 204.5 | 204.3 | WORDEN | | | |
| JR | | | 03858 | | 209.8 | 209.6 | JONES JCT. | | | |
| JR | | 12,090 | 30828 | | 213.1 | 212.9 | HUNTLEY | | | CTC |
| | | 9,587 | 30834 | | 218.1 | 218.9 | LOCKWOOD | | | |
| | | | 30837 | | 221.8 | 221.5 | EAST BILLINGS | | | |
| BJK RTY | | | 30839 | | 225.9 | 225.2 | BG BILLINGS | | | ABS Del Trk. |
| X | W 4,397 | | 30848 | | 7.3 | 232.2 | YESEN | | | |
| JXY | | | 30852 | 41 | 11.4 | 237.3 | MOSSMAIN | | | |
| BJK RTY | | | 30855 | | 13.8 | 239.2 | KD LAUREL YARD | | | CTC |
| | | | | | | | LAUREL | | | |

BN Radio Channel No. 1 and No. 2 in service on these Subdivisions.

8 YELLOWSTONE DIVN — 3rd Subdivn

| WESTWARD ↓ | Rule (A) Signs | Length of Sidings in Feet | Station Numbers | Line Segment | Mile Post Location | Distance From Gillette | MAIN LINE STATIONS | | EASTWARD ↑ | |
|------------|----------------|---------------------------|-----------------|--------------|--------------------|------------------------|--------------------|--------------|-------------|--|
| | | | | | | | | Office Calls | | |
| | BKRTY | | 30696 | 4 | 597.2 | 0.0 | X | GILLETTE | | |
| | | 8,965 | 30605 | | 606.4 | 9.2 | | 92 | ORIVA | |
| | | 6,101 | 30613 | | 614.5 | 17.2 | | 80 | FELIX | |
| | | 12,854 | 30620 | | 621.4 | 24.2 | | 70 | ECHETA | |
| | | 12,587 | 30630 | | 631.4 | 34.0 | | 98 | LARIAT | |
| | | | 30640 | | 641.0 | 43.8 | | 71 | ARYADA | |
| | | 12,759 | 30647 | | 648.0 | 50.9 | | 125 | KENDRICK | |
| | Y | 11,787 | 30659 | | 660.5 | 63.4 | CA | | CLEARMONT | |
| | | 12,744 | 30670 | | 671.8 | 74.5 | | 80 | ULM | |
| | | 4,555 | 30678 | | 679.8 | 82.5 | | 75 | VERONA | |
| | | 12,982 | 30686 | | 687.4 | 90.0 | | 30 | ARNO | |
| | JTY | 6,611 | 30689 | | 690.4 | 93.0 | | 31 | DUTCH | |
| | | 4,009 | 30692 | | 693.4 | 96.1 | | 52 | WAKELEY | |
| | BKRTY | | 30697 | | 698.6 | 101.3 | SA | | SHERIDAN | |
| | Y | 3,078 | 30705 | | 706.3 | 109.4 | | 81 | KIEWIT | |
| | | 3,618 | 30707 | | 708.1 | 111.0 | | 16 | KLEENBURN | |
| | | 14,333 | 30713 | | 714.9 | 117.6 | | 64 | RANCHESTER | |
| | | 5,843 | 30723 | | 724.1 | 126.8 | RK | | PARKMAN | |
| | | 6,163 | 30730 | | 731.0 | 133.6 | | 62 | ABERDEEN | |
| | | 6,874 | 30736 | | 737.1 | 139.8 | | 50 | WYOLA | |
| | | 2,992 | 30740 | | 741.7 | 144.8 | | 82 | SPEAR | |
| | | 5,980 | 30749 | | 750.2 | 153.0 | GT | | LODGE GRASS | |
| | | 7,001 | 30759 | | 760.1 | 162.9 | | 109 | BENTEN | |
| | | 5,440 | 30770 | | 770.9 | 173.8 | | 125 | CROW AGENCY | |
| | Y | 6,004 | 30782 | 783.8 | 186.6 | PC | | HARDIN | | |
| | | 7,327 | 30791 | 792.7 | 195.5 | | 23 | ROWLEY | | |
| | | 5,996 | 30812 | 813.9 | 216.8 | | 63 | ANITA | | |
| | | 1,639 | 30819 | 820.2 | 223.1 | | 56 | BALLANTINE | | |
| | J | | 30825 | 825.9 | 228.7 | | 34 | MORAN JCT. | CTC | |
| | J | 5,698 | 30828 | 829.3 | 232.1 | | | HUNTLEY | | |

YELLOWSTONE DIVN — 4th Subdivn

| WESTWARD ↓ | Rule (A) Signs | Length of Sidings in Feet | Station Numbers | Line Segment | Mile Post Location | Distance From Mandan | BRANCH LINE STATIONS | | EASTWARD ↑ | |
|------------|----------------|---------------------------|-----------------|--------------|--------------------|----------------------|----------------------|--------------|-------------|--|
| | | | | | | | | Office Calls | | |
| | BKRTY | | 03444 | 301 | 0.0 | 0.0 | A | MANDAN | | |
| | | 2,716 | 85314 | | 12.5 | 13.7 | | 137 | LYNWOOD | |
| | | 2,716 | 85318 | | 16.6 | 17.9 | | 41 | ST. ANTHONY | |
| | | 2,516 | 85327 | | 28.2 | 27.0 | | 81 | INVELLAC | |
| | | 2,466 | 85332 | | 31.1 | 31.9 | | 49 | BURGESS | |
| | | 2,341 | 85335 | | 42.7 | 44.0 | | 121 | FLASHER | |
| | | 906 | 85343 | | 43.3 | 52.8 | | 85 | LARK | |
| | | 1,470 | 85358 | | 53.0 | 62.4 | | 98 | CARSON | |
| | | 850 | 85380 | | 59.9 | 69.3 | | 69 | NEIL | |
| | | 2,151 | 85367 | | 66.9 | 76.4 | | 71 | ELGIN | |
| | | 1,686 | 85372 | | 72.4 | 81.7 | | 53 | NEW LEIPZIG | |
| | | 1,401 | 85383 | | 82.6 | 92.0 | | 103 | BURT | |
| | T | | 85391 | 91.1 | 100.5 | | 85 | MOTT | | |

YELLOWSTONE DIVN — 5th Subdivn

| WESTWARD ↓ | Rule (A) Signs | Length of Sidings in Feet | Station Numbers | Line Segment | Mile Post Location | Distance From Mandan | BRANCH LINE STATIONS | | EASTWARD ↑ | |
|------------|----------------|---------------------------|-----------------|--------------|--------------------|----------------------|----------------------|--------------|---------------|--|
| | | | | | | | | Office Calls | | |
| | BKRTY | | 03444 | 303 | 0.0 | 0.0 | A | MANDAN | | |
| | | 4,698 | 85420 | | 20.1 | 21.2 | | 213 | PRICE | |
| | | 1,678 | 85427 | | 27.0 | 28.1 | | 69 | SANGER | |
| | | 4,693 | 85435 | | 34.8 | 35.9 | | 78 | HENBLER | |
| | | 1,146 | 85443 | | 43.4 | 44.4 | | 85 | FORT CLARK | |
| | | | 85447 | | 47.2 | 48.6 | | 42 | GLENHAROLD | |
| | | 3,697 | 85452 | | 52.4 | 53.5 | | 49 | STANTON | |
| T | | 9,136 | 85465 | | 64.4 | 65.4 | | 119 | HAZEN | |
| RY | | 2,253 | 85473 | | 72.6 | 73.6 | BH | 82 | BEULAH | |
| Y | | 2,735 | 85480 | | 81.0 | 81.0 | Z | 74 | ZAP | |
| | | 1,177 | 85487 | | 86.0 | 87.9 | | 49 | GOLDEN VALLEY | |
| | | 1,084 | 85494 | | 93.7 | 94.8 | | 69 | DOGE | |
| | | 1,110 | 85501 | | 100.9 | 102.0 | | 72 | HALLIDAY | |
| | | 1,169 | 85507 | | 106.6 | 107.7 | | 57 | WENNER | |
| | | 1,514 | 85515 | | 114.4 | 115.5 | | 78 | DUNN CENTER | |
| | | | 85522 | | 121.4 | 122.4 | | 69 | KILLDEER | |

YELLOWSTONE DIVN — 6th Subdivn

| WESTWARD ↓ | Rule (A) Signs | Length of Sidings in Feet | Station Numbers | Line Segment | Mile Post Location | Distance From Beach | BRANCH LINE STATIONS | | EASTWARD ↑ | |
|------------|----------------|---------------------------|-----------------|--------------|--------------------|---------------------|----------------------|--------------|------------|--|
| | | | | | | | | Office Calls | | |
| | JRT | | 03607 | 305 | 0.5 | 0.0 | B | BEACH | | |
| | | | 85706 | | 8.4 | 8.4 | | 84 | THELAN | |
| | | 1,493 | 85713 | | 13.0 | 13.3 | | 49 | GOLVA | |

YELLOWSTONE DIVN — 7th Subdivn

| WESTWARD ↓ | Rule (A) Signs | Length of Sidings in Feet | Station Numbers | Line Segment | Mile Post Location | Distance From Glendive | BRANCH LINE STATIONS | | EASTWARD ↑ | |
|------------|----------------|---------------------------|-----------------|--------------|--------------------|------------------------|----------------------|--------------|--------------|--|
| | | | | | | | | Office Calls | | |
| | BKRTY | | 03649 | 306 | 0.0 | 0.0 | GI | GLEN DIVE | | |
| | | 1,745 | 85811 | | 10.0 | 10.9 | | 109 | STIPEK | |
| | | 2,062 | 85820 | | 18.8 | 20.1 | | 92 | INTAKE | |
| | | 1,631 | 85835 | | 33.7 | 35.0 | | 149 | SAVAGE | |
| JY | | 1,589 | 85836 | | 34.9 | 36.2 | | 12 | CECIL JCT. | |
| | | 1,401 | 85840 | | 38.0 | 39.8 | | 36 | HOFFMANVILLE | |
| | | 1,917 | 85844 | | 43.3 | 44.6 | | 45 | CRANE | |
| JY | | 59229 | | | 49.6 | 50.9 | | 43 | NEWLON JCT. | |
| BKRTY | | 59225 | | | 53.9 | 55.2 | SY | 105 | SHINEY | |
| JRTY | | 59215 | | | 64.4 | 65.7 | FA | 63 | FAIRVIEW | |
| | | | 59209 | | 69.6 | 70.9 | | 90 | DORE | |
| JT | | 12,267 | 01063 | | 78.6 | 80.0 | | | SNOWDEN | |

YELLOWSTONE DIVN — 8th Subdivn

| WESTWARD ↓ | Rule (A) Signs | Length of Sidings in Feet | Station Numbers | Line Segment | Mile Post Location | Distance From Newlon Jct. | BRANCH LINE STATIONS | | EASTWARD ↑ | |
|------------|----------------|---------------------------|-----------------|--------------|--------------------|---------------------------|----------------------|--------------|------------|--|
| | | | | | | | | Office Calls | | |
| | JY | | 59229 | 310 | 15.3 | 0.0 | | NEWLON JCT. | | |
| | | 2,084 | 59251 | | 37.0 | 21.7 | | 217 | LAMBERT | |
| T | | | 59274 | | 60.7 | 45.1 | | 224 | RICHEY | |

BN Radio Channel No. 1 in service on these Subdivisions.

YELLOWSTONE DIVN — 9th Subdivn

| Rule (A) Signs | Length of Sidings in Feet | Station Numbers | Line Segment | Mile Post Location | Distance From Watford City | BRANCH LINE STATIONS Office Calls |
|----------------|---------------------------|-----------------|--------------|--------------------|----------------------------|--------------------------------------|
| T | | 59337 | 311 | 36.6 | 0.0 | WATFORD CITY 7.4 |
| | | 59329 | | 29.0 | 7.4 | ARNHARD 10.2 |
| | | 59319 | | 18.9 | 17.6 | ALEXANDER 5.9 |
| | | 59313 | | 13.0 | 23.5 | CHARBONNEAU 7.9 |
| | | 59306 | | 5.1 | 31.4 | CARTWRIGHT 5.8 |
| JRTY | | 59215 | | 0.0 | 37.2 | FA FAIRVIEW |

YELLOWSTONE DIVN — 10th Subdivn

| Rule (A) Signs | Length of Sidings in Feet | Station Numbers | Line Segment | Mile Post Location | Distance From Glendive | BRANCH LINE STATIONS Office Calls |
|----------------|---------------------------|-----------------|--------------|--------------------|------------------------|--------------------------------------|
| BJK RTY | | 86449 | 312 | 0.0 | 0.0 | GI GLENDIVE 24.4 |
| | 1,599 | 86924 | | 22.2 | 24.4 | LINDSAY 27.7 |
| | 2,171 | 86962 | | 50.0 | 52.1 | CIRCLE 12.1 |
| T | 1,765 | 86964 | | 62.0 | 64.2 | BROCKWAY |

YELLOWSTONE DIVN — 11th Subdivn

| Rule (A) Signs | Length of Sidings in Feet | Station Numbers | Line Segment | Mile Post Location | Distance From Nichols Wye | BRANCH LINE STATIONS Office Calls |
|----------------|---------------------------|-----------------|--------------|--------------------|---------------------------|--------------------------------------|
| JRT | | 03778 | 313 | 0.0 | 0.0 | NICHOLS WYE 17.3 |
| | 6,984 | 86017 | | 17.0 | 17.2 | MOON 12.1 |
| RY | | 86029 | | 29.1 | 29.3 | COLSTRIP 27.7 |
| R | | 86034 | | 33.1 | 33.1 | COW CREEK 4.0 |
| TY | | 86039 | | 40.5 | 39.1 | BIG SKY |

YELLOWSTONE DIVN — 12th Subdivn

| Rule (A) Signs | Length of Sidings in Feet | Station Numbers | Line Segment | Mile Post Location | Distance From Sarpy Jct. | BRANCH LINE STATIONS Office Calls |
|----------------|---------------------------|-----------------|--------------|--------------------|--------------------------|--------------------------------------|
| J | | 03795 | 315 | 0.0 | 0.0 | SARPY JCT. 18.3 |
| | 7,400 | 03918 | | 18.3 | 18.3 | BOB 17.8 |
| RY | 7,362 | 03936 | | 37.4 | 35.9 | KUENH |

YELLOWSTONE DIVN — 13th Subdivn

9

| Rule (A) Signs | Length of Sidings in Feet | Station Numbers | Line Segment | Mile Post Location | Distance From Dutch | BRANCH LINE STATIONS Office Calls |
|----------------|---------------------------|-----------------|--------------|--------------------|---------------------|--------------------------------------|
| JRTY | | 30689 | 314 | 0.0 | 0.0 | DUTCH 14.7 |
| Y | 6,660 | 33218 | | 14.7 | 14.7 | DECKER 7.9 |
| | | 33236 | 320 | 22.6 | 22.6 | NERCO |

YELLOWSTONE DIVN — 14th Subdivn

| Rule (A) Signs | Length of Sidings in Feet | Station Numbers | Line Segment | Mile Post Location | Distance From Mo-bridge | MAIN LINE STATIONS Office Calls |
|----------------|---------------------------|-----------------|--------------|--------------------|-------------------------|------------------------------------|
| BKRT | 13,061 | 06405 | 2005 | 805.0 | 0.0 | MOBRIDGE 8.2 |
| | | 06413 | | 813.2 | 8.2 | MOREAU JCT. 3.8 |
| | 7,570 | 06417 | | 817.0 | 12.0 | WAKPALA 18.4 |
| | 9,685 | 06435 | | 835.4 | 30.4 | McLAUGHLIN 15.2 |
| | 4,689 | 06451 | | 850.6 | 45.6 | WALKER 13.0 |
| | 7,748 | 06464 | | 863.6 | 58.6 | McINTOSH |
| | 6,281 | 06473 | | 873.3 | 68.3 | WATAUGA 8.8 |
| | 7,690 | 06482 | | 892.1 | 77.1 | MORRISTOWN 12.5 |
| | 6,520 | 06495 | | 894.6 | 89.6 | THUNDERHAWK 9.2 |
| T | 4,697 | 06504 | | 903.8 | 98.8 | LEMMON 5.9 |
| | 8,344 | 06510 | | 909.7 | 104.7 | PETREL 9.6 |
| | 4,618 | 06519 | | 919.3 | 114.3 | HAYNES 8.2 |
| BR | 4,702 | 06527 | | 927.5 | 122.5 | HG HETTINGER |
| | 8,078 | 06536 | | 936.1 | 131.1 | BUCYRUS 18.1 |
| | | 06549 | | 949.2 | 144.2 | KNIFE RIVER 1.9 |
| | 4,611 | 06551 | | 951.1 | 146.1 | GABCOYNE 8.5 |
| | 7,850 | 06560 | | 959.6 | 154.6 | BUFFALO SPRINGS 7.8 |
| | 4,732 | 06567 | | 967.4 | 162.4 | BOWMAN 13.2 |
| | 6,662 | 06581 | | 980.6 | 175.6 | RHAME 14.5 |
| TY | | 06595 | | 995.1 | 190.1 | MARMARTH 20.5 |
| | 11,424 | 06615 | 1015.6 | 210.6 | BAKER 12.5 | |
| | 4,616 | 06628 | 1028.1 | 223.1 | PLEVNA 15.8 | |
| | 6,534 | 96644 | 1043.9 | 238.9 | HEWY 15.0 | |
| | 8,946 | 06659 | 1058.9 | 253.9 | MILDRED 14.4 | |
| | 6,542 | 06673 | 1073.3 | 268.3 | BLUFFPORT 7.3 | |
| J | 4,600 | 03688 | 1080.6 | 275.6 | TY TERRY | |

Rule 268A is not in effect on 14th Subdivision.

BN Radio Channel No. 1 in service on these Subdivisions.

**YELLOWSTONE DIVISION
LINE SEGMENT NUMBERS**

YARD LINE SEGMENTS

| Line Segment | Yard | Line Segment | Yard |
|--------------|-------------|--------------|----------------------|
| 730 | Bismarck | 735 | Billings |
| 731 | Mandan | 736 | Laurel |
| 732 | Mandan Shop | 737 | Laurel Shop |
| 733 | Dickinson | 738 | Laurel Welding Plant |
| 734 | Glendive | 739 | Sheridan |

OTHER ROAD LINE SEGMENTS

| Line Segment | Limits | Mileposts |
|--------------|--------------------|------------|
| 304 | Truax Jct. — Truax | 0.0 to 6.4 |
| 307 | Cecil Jct. — Cecil | 0.0 to 4.7 |
| 314 | Decker Mine | 3.10 miles |
| 317 | East Decker Mine | 3.13 miles |
| 320 | Nerco | 5.50 miles |

BALLAST PITS

| Line Segment | Yard |
|--------------|----------|
| 750 | Sheridan |

YELLOWSTONE DIVISION INDUSTRIAL TRACKS AND OTHER TRACKS NOT SHOWN AS STATIONS IN TIME TABLE

| NAME | LOCATION | Capacity in Cars | Switch Opens | NAME | LOCATION | Capacity in Cars | Switch Opens |
|--|------------------------------------|------------------|--------------|--------------------------------|----------------------------------|------------------|--------------|
| First Subdivision | | | | Eighth Subdivision | | | |
| 03463 Judson..... | 6.5 miles east of New Salem..... | 18 | Both | 59258 Enid..... | 7.4 miles west of Lambert..... | 41 | Both |
| 03475 North Almont..... | 4.6 miles west of New Salem..... | 24 | Both | Ninth Subdivision | | | |
| 03583 Little Missouri..... | 1.1 miles west of Medora..... | 54 | West | 59301 Hardy Beet Track..... | 1.4 miles east of Fairview..... | 59 | Both |
| 03694 Demoree..... | 6.0 miles west of Rider..... | 10 | West | 59324 Rawson..... | 4.8 miles east of Alexander..... | 30 | Both |
| Second Subdivision | | | | Tenth Subdivision | | | |
| 03783 Maudru..... | 3.8 miles east of Finch..... | 22 | West | 85907 Western Gravel Co..... | 8.3 miles west of Glendive..... | 20 | Both |
| 03880 Wynne Spur..... | 1.6 miles east of Huntley..... | 20 | West | 85933 Kimroad..... | 8.6 miles west of Lindsay..... | 18 | Both |
| 30837 Brick Yard..... | 0.4 miles west of E. Billings..... | 16 | East | Eleventh Subdivision | | | |
| 30845 Siding No. 1..... | 5.0 miles west of Billings..... | 37 | West | 86015 Dowlin..... | 2.5 miles east of Moon..... | 14 | Both |
| 30846 Long Spur..... | 5.2 miles west of Billings..... | 35 | West | 86036 Nitrate Spur..... | 0.3 miles east of Big Sky..... | 3 | West |
| 30847 Rockwood Spur..... | 5.2 miles west of Billings..... | 35 | East | Twelfth Subdivision | | | |
| 30850 Siding No. 2..... | 2.4 miles west of Yegen..... | 35 | West | 03911 Mike..... | 6.9 miles east of Bob..... | 7 | East |
| Third Subdivision | | | | Thirteenth Subdivision | | | |
| 30826 Croton..... | 5.8 miles west of Echeta..... | 2 | West | 03927 Walt..... | 9.1 miles west of Bob..... | 7 | East |
| 30853 Big Corral..... | 6.0 miles west of Kendrick..... | 20 | Both | Fourteenth Subdivision | | | |
| 30779 Reno..... | 9.2 miles west of Crow Agency..... | 18 | Both | 33207 Countant Creek..... | 6.8 miles west of Dutch..... | 7 | Both |
| Fifth Subdivision | | | | Fifteenth Subdivision | | | |
| 85403 Standard Oil Refinery..... | 3.3 miles west of Mandan..... | 37 | East | 08428 Mahto..... | 10.6 miles west of Wakpala..... | 54 | East |
| 85404 Duke Spur..... | 3.4 miles west of Mandan..... | 5 | West | 08514 White Butte..... | 4.0 miles west of Petrel..... | 33 | West |
| 85405 Montana-Dakota Utility..... | 3.8 miles west of Mandan..... | 65 | East | 08545 Reader..... | 8.5 miles west of Bucyrus..... | 43 | Both |
| 85478 Republic..... | 2.0 miles east of Zap..... | 172 | Both | 08555 Seranton..... | 3.9 miles west of Gascoyne..... | 66 | Both |
| Beulah Mine..... | 4.1 miles from Beulah..... | 300 | Both | 08575 Griffin..... | 7.4 miles west of Bowman..... | 58 | Both |
| Antelope Valley Spur..... | 4.5 miles west of Beulah..... | | East | 08596 Ives..... | 5.0 miles west of Rhame..... | 49 | East |
| Sixth Subdivision | | | | Sixteenth Subdivision | | | |
| 85709 Ekro..... | 1.0 mile west of Thelan..... | 6 | East | 08636 Westmore..... | 7.6 miles west of Plevna..... | 12 | West |
| Seventh Subdivision | | | | Seventeenth Subdivision | | | |
| 85805 Glendive Pitt..... | 3.6 miles west of Glendive..... | 2 | West | 08651 Lacombe..... | 6.9 miles west of Ismay..... | 65 | West |
| 85806 West Glendive Spur..... | 4.3 miles west of Glendive..... | 35 | West | 08685 Calypso..... | 4.7 miles west of Bluffport..... | 52 | Both |
| 85838 Cecil Spur..... | 5.0 miles from Cecil Jct..... | 2 | Both | | | | |
| 85846 Piche..... | 2.6 miles west of Crane..... | 38 | Both | | | | |
| 89225 Holly Spur..... | 0.3 miles west of Newlon Jct..... | 8 | West | | | | |
| 89228 Riverview..... | 1.4 miles west of Newlon Jct..... | 14 | Both | | | | |
| 89227 Montana-Dakota Utilities Spur..... | 2.6 miles west of Newlon Jct..... | 90 | West | | | | |
| 89221 Woolley Beet Track..... | 6.4 miles east of Fairview..... | 32 | Both | | | | |
| 89218 Ridgelaawn..... | 4.1 miles east of Fairview..... | 11 | Both | | | | |
| 89216 Loddington Beet Track..... | 1.5 miles east of Fairview..... | 36 | Both | | | | |
| 89211 Cowise Beet Track..... | 2.3 miles east of Dora..... | 16 | Both | | | | |

FREIGHT TRAIN SCHEDULES

(For Information Only)

| WESTWARD | | | | | | | | |
|-------------|----------|-----------|--------|-----------|---------|-----------|---------|-------------|
| Train No. | MANDAN | DICKINSON | | GLENDDIVE | | FORSYTH | | LAUREL |
| | Leave | Arrive | Leave | Arrive | Leave | Arrive | Leave | Arrive |
| CHB* | 1:50AM | 4:40AM | 4:45AM | 7:50AM | 8:05AM | 11:00AM | 11:05AM | 3:35PM |
| 85* | 2:50AM | 6:00AM | 6:30AM | 9:50AM | 10:05AM | 1:30PM | 1:40PM | 6:35PM |
| Train No. | GILLETTE | SHERIDAN | | LAUREL | | | | |
| | Leave | Arrive | Leave | Arrive | | | | |
| HSP | 10:10AM | 1:10PM | 1:15PM | 7:15PM | | | | |
| DPS | 6:40AM | 9:40AM | 9:50AM | 3:50PM | | | | |
| EASTWARD | | | | | | | | |
| Train No. | LAUREL | FORSYTH | | GLENDDIVE | | DICKINSON | | MANDAN |
| | Leave | Arrive | Leave | Arrive | Leave | Arrive | Leave | Arrive |
| 86 | 2:00PM | 6:20PM | 6:25PM | 9:00PM | 9:20PM | 1:20AM | 1:40AM | 5:10AM (MT) |
| Train No. | LAUREL | SHERIDAN | | GILLETTE | | | | |
| | Leave | Arrive | Leave | Arrive | | | | |
| PSH | 1:15PM | 6:45PM | 6:50PM | 9:55PM | | | | |
| SPD | 2:30PM | 8:00PM | 8:10PM | 11:15PM | | | | |

*Train CHB operates Wednesday and Thursday. Train 85 operates Friday through Tuesday.

ROCKY MOUNTAIN DIVN — 1st Subdivn

| RULE (A) Signs | Length of Sidings in Feet | Station Numbers | Line Segment | Mile Post Location | Distance From Laurel | MAIN LINE STATIONS | | |
|----------------|---------------------------|-----------------|--------------|--------------------|----------------------|--------------------|-----|-----|
| | | | | | | Office Code | | |
| JY | | 30855 | 41 | 14.9 | 0.0 | LAUREL | CTC | |
| | | 30859 | | 17.7 | 4.2 | SPURLING | | |
| | 5,935 | 30863 | | 22.6 | 7.7 | PARK CITY | | |
| | 9,247 | 30872 | | 32.3 | 17.3 | RAPIDS | | |
| | 9,376 | 30880 | | 40.3 | 25.4 | CO COLUMBUS | | |
| | 8,587 | 30889 | | 47.4 | 33.8 | CRAVER | | |
| | 9,679 | 30897 | | 56.8 | 42.1 | NEED POINT | | |
| | 9,191 | 30902 | | 62.0 | 47.1 | QUEBEC | | |
| | 9,411 | 30910 | | 71.2 | 55.4 | GREYCLIFF | | |
| | 9,425 | 30921 | | 80.9 | 66.0 | BD BIG TIMBER | | |
| | 9,494 | 30931 | | 90.7 | 76.0 | CARNEY | | |
| | 10,387 | 30942 | | 102.3 | 87.4 | ELTON | | |
| JT | | 30950 | | 109.7 | 94.8 | MISSION | | |
| BJK RTY | 10,466 | 30956 | | 115.3 | 100.5 | VS LIVINGSTON | | ABS |

ROCKY MOUNTAIN DIVN - 3rd Subdivn

| RULE (A) Signs | Length of Sidings in Feet | Station Numbers | Line Segment | Mile Post Location | Distance From Missoula | MAIN LINE STATIONS | |
|----------------|---------------------------|-----------------|--------------|--------------------|------------------------|--------------------|-----|
| | | | | | | Office Code | |
| BLJK RTXY | | 31198 | 42 | 119.3 | 0.0 | 2 MT MA MISSOULA | ABS |
| JY | 934 | 31206 | | 125.9 | 6.6 | 2 MT DE SMET | CTC |
| | 2,129 | 31211 | 6.1 | 12.8 | NAGOS | ABS | |
| | 2,161 | 31216 | 10.6 | 17.2 | EVARO | | |
| | 2,000 | 31226 | 21.1 | 27.7 | ARLEE | | |
| | 1,873 | 31236 | 30.8 | 37.4 | RAVALLI | | |
| JT | 4,489 | 31243 | 37.8 | 44.5 | DIXON | | |
| | 1,189 | 31250 | 44.5 | 51.1 | McDONALD | | |
| | 1,892 | 31257 | 51.6 | 58.2 | PERMA | | |
| BJK RTY | 9,214 | 31269 | 64.3 | 70.8 | PD PARADISE | | |
| | | | 0.0 | 70.8 | PD PARADISE | | CTC |
| | 11,440 | 31275 | 6.0 | 76.6 | HO PLAINS | | |
| | 11,365 | 31280 | 20.4 | 91.3 | BOOY | | |
| | 11,865 | 31301 | 31.5 | 102.3 | FN THOMPSON FALLS | | |
| | 9,022 | 31316 | 46.4 | 117.2 | CANLDS | | |
| | | 31323 | 61.4 | 134.7 | THOUY CREEK | | |
| | 12,301 | 31331 | 61.8 | 135.3 | TUSCON | | |
| | 11,331 | 31343 | 72.5 | 145.2 | BORDON | | |
| | 11,324 | 31349 | 80.1 | 150.3 | HEWSON | | |
| | 12,341 | 31360 | 82.1 | 151.7 | COLEY | | |
| | 8,000 | 31372 | 103.5 | 173.8 | HOPE | | |
| | 8,425 | 31380 | 115.9 | 187.7 | KOUTERNA | | |

There are two main tracks with ABS rules in effect between MP 119.3 and MP 119.8. Interlocking rules are in effect between MP 119.8 and MP 120.0. ABS rules are in effect between MP 120.0 and MP 122.8. There are two main tracks (north and south main) with CTC rules in effect between MP 122.8 and De Smet.

ROCKY MOUNTAIN DIVN — 2nd Subdivn

| RULE (A) Signs | Length of Sidings in Feet | Station Numbers | Line Segment | Mile Post Location | Distance From Livingston | MAIN LINE STATIONS | |
|----------------|---------------------------|-----------------|--------------|--------------------|--------------------------|--------------------|-----|
| | | | | | | Office Code | |
| BJK RTY | 8,632 | 30856 | 41 | 115.3 | 0.0 | VS LIVINGSTON | ABS |
| | | | | 119.9 | | MUIR | CTC |
| | 8,920 | 30868 | | 127.1 | 11.9 | WEST END | |
| | 9,443 | 30870 | | 128.5 | 13.1 | BOZEMAN | |
| BKPRT | 10,166 | 30881 | | 140.4 | 24.8 | EZ BELGRADE | |
| | 6,899 | 30991 | | 149.8 | 34.3 | BR MANHATTAN | |
| JT | 3,653 | 31000 | | 159.3 | 43.7 | MN LOGAN | |
| J | 7,757 | 31005 | | 164.8 | 49.0 | TRIDENT | |
| | 4,943 | 31011 | | 170.5 | 54.9 | RT CLARKSTON | |
| | 6,894 | 31020 | | 178.9 | 63.2 | LOMBARD | |
| | 7,008 | 31026 | | 184.8 | 69.2 | TS TOSTON | |
| | 5,419 | 31035 | | 194.2 | 78.5 | TN TOWNSEND | |
| T | 7,086 | 31046 | | 205.2 | 89.6 | WINSTON | |
| | 7,028 | 31059 | | 218.1 | 102.6 | LOUISVILLE | |
| | 7,958 | 31068 | | 227.4 | 111.8 | JN EAST HELENA | |
| J | 3,452 | 31075 | 234.0 | 118.3 | HELENA | ABS | |
| BJK RTY | 6,660 | 31079 | 238.4 | 122.7 | HY HELENA | ABS | |
| | | 31084 | 0.0 | | 5.2 TONIN | CTC | |
| | | | 5.0 | 127.9 | 3.0 BIRDSEYE | | |
| | 4,803 | 31087 | 8.1 | 130.9 | 4.8 AUSTIN | | |
| | 6,825 | 31092 | 13.0 | 135.7 | 2.3 WEED | | |
| | 4,503 | 31095 | 16.3 | 139.1 | 2.0 SKYLINE | | |
| T | 7,951 | 31100 | 18.4 | 141.4 | 8.4 BLOSSBURG | | |
| | | | 20.5 | 143.4 | ELLISTON | | |
| | | | 28.9 | 151.8 | | | |
| | | | 37.7 | 160.5 | 8.7 AVON | | |
| | | | 43.4 | 166.2 | 5.7 BRADLEY | | |
| JKT | 7,749 | 31130 | 50.5 | 173.7 | 7.5 GARRISON | | |
| | 14,660 | 31134 | 54.7 | 177.5 | 3.8 PHOSPHATE | | |
| | | | 62.6 | 185.4 | 7.9 JENS | | |
| JT | 10,638 | 31150 | 70.7 | 193.5 | 8.1 D DRUMMOND | | |
| | 14,103 | 31160 | 81.1 | 203.9 | 10.4 BEARMOUTH | | |
| | 9,358 | 31168 | 88.7 | 211.5 | 7.5 NIMROD | | |
| | 11,114 | 31182 | 102.5 | 225.4 | 13.9 CLINTON | | |
| | 10,074 | 31192 | 113.2 | 236.0 | 10.6 BN BONNER | | |
| BJKR TXY | | 31198 | 119.3 | 242.1 | 2 MT MD MA MISSOULA | ABS | |

ABS Rules are in effect between MP 235.6 and MP 0.2. There are two main tracks (north and south main) with CTC Rules in effect between MP 0.2 and MP 5.1. There are two main tracks with ABS Rules in effect between MP 117.2 and MP 119.3.

BN Radio Channel No. 1 and No. 2 in service on these Subdivisions.

12 ROCKY MOUNTAIN DIVN — 4th Subdivn

| WESTWARD ↓ | RULE (A) Signs | Length of Sidings in Feet | Station Numbers | Line Segment | Mile Post Location | Distance From Logan | MAIN LINE STATIONS | | Office Calls | EASTWARD ↑ |
|------------|----------------|---------------------------|-----------------|--------------|--------------------|---------------------|--------------------|--|--------------|------------|
| | | | | | | | | | | |
| | J | 7,757 | 31005 | 326 | 0.0 | 0.0 | LOGAN | | | |
| | | 3,531 | 86906 | | 6.8 | 6.6 | KS THREE FORKS | | | |
| | | 3,533 | 86913 | | 12.6 | 12.5 | WILLOW CREEK | | | |
| | AJT | 3,562 | 86919 | | 19.4 | 19.2 | SAPPINGTON | | | |
| | | 3,524 | 86931 | | 31.4 | 31.3 | CARDWELL | | | |
| | JTY | 6,001 | 86938 | | 38.5 | 38.3 | WH WHITEHALL | | | |
| | | 2,837 | 86945 | | 45.0 | 45.1 | PIPESTONE | | | |
| | | 2,650 | 86950 | | 50.3 | 50.2 | SPIRE ROCK | | ABS | |
| | | 2,554 | 86960 | | 60.7 | 60.5 | HOMESTAKE | | | |
| | BKRTY | 4,851 | 86971 | | 70.6 | 70.4 | BY BUTTE | | | |
| | AJRTY | 3,732 | 86979 | 7.0 | 77.4 | SB SILVER BOW | | | | |
| | | 2,354 | 86998 | 25.2 | 95.6 | WARM SPRINGS | | | | |
| | | 2,030 | 87015 | 40.5 | 110.9 | DE DEER LODGE | | | | |
| | | 2,387 | 87020 | 45.7 | 116.1 | KOHR | | | | |
| | JRTY | 7,749 | 31130 | 51.1 | 121.9 | GR GARRISON | | | | |

ROCKY MOUNTAIN DIVN — 5th Subdivn

| WESTWARD ↓ | RULE (A) Signs | Length of Sidings in Feet | Station Numbers | Line Segment | Mile Post Location | Distance From De Smet | MAIN LINE STATIONS | | Office Calls | EASTWARD ↑ |
|------------|----------------|---------------------------|-----------------|--------------|--------------------|-----------------------|--------------------|--|--------------|------------|
| | | | | | | | | | | |
| | J | | 31205 | 42 | 125.9 | 0.0 | DE SMET | | | |
| | | 5,025 | 87606 | | 132.2 | 5.2 | SCHILLING | | CTC | |
| | | 11,895 | 87610 | | 136.6 | 9.7 | FRENCHTOWN | | | |
| | | 6,319 | 87624 | | 150.8 | 23.9 | LOTHROP | | | |
| | | 4,812 | 87634 | | 161.2 | 34.3 | CYR | | | |
| | | 6,449 | 87641 | | 167.6 | 40.7 | RIVULET | | | |
| | | 6,548 | 87649 | | 176.2 | 49.2 | WESTFALL | | | |
| | | 6,198 | 87657 | | 183.6 | 56.7 | QN SUPERIOR | | | |
| | | 4,829 | 87662 | | 188.8 | 61.9 | SPRING GULCH | | | |
| | JT | 4,105 | 87670 | | 197.2 | 70.3 | G ST. REGIS | | ABS | |
| | | 5,408 | 87675 | | 201.9 | 75.0 | TOOLE | | | |
| | | 3,846 | 87679 | | 206.4 | 79.4 | DONLAN | | | |
| | | 6,197 | 87687 | | 214.2 | 87.3 | QUINNS | | | |
| | BKRTY | | 31269 | | 219.2 | 92.3 | PD PARADISE | | | |

ABS Rules in effect between MP 316.4 and MP 317.9 on 6th Subdivn.

BN Radio Channel No. 1 and No. 2 in service on 4th and 8th Subdivn.

BN Radio Channel No. 1 in service on 5th Subdivision.

7th Subdivision not in use.

ROCKY MOUNTAIN DIVN — 6th Subdivn

| WESTWARD ↓ | RULE (A) Signs | Length of Sidings in Feet | Station Numbers | Line Segment | Mile Post Location | Distance From Casper | MAIN LINE STATIONS | | Office Calls | EASTWARD ↑ |
|------------|----------------|---------------------------|-----------------|--------------|--------------------|----------------------|--------------------|--|--------------|------------|
| | | | | | | | | | | |
| | BKRTY | | 32236 | 5 | 202.2 | 0.0 | CS CASPER | | ABS | |
| | | 5,726 | 32247 | | 213.0 | 11.1 | BISHOP | | | |
| | JR | | 32251 | | 217.6 | 15.4 | ILCO | | | |
| | | 4,100 | 32257 | | 223.9 | 21.7 | BUCKNUM | | | |
| | | 2,290 | 32263 | | 229.8 | 27.9 | PETRE | | | |
| | | 5,661 | 32275 | | 241.5 | 39.3 | POWDER RIVER | | | |
| | | 3,616 | 32286 | | 252.5 | 50.0 | LOX | | | |
| | T | 4,650 | 32294 | | 260.4 | 58.3 | ARMINTO | | | |
| | | 3,680 | 32307 | | 273.8 | 71.8 | MADDEN | | | |
| | | 4,249 | 32318 | | 284.1 | 81.9 | LYSITE | | | |
| | | 3,928 | 32325 | | 290.4 | 89.0 | GATE | | | |
| | JRY | | 32338 | | 303.9 | 102.4 | SHOBON | | | |
| | BKRTY | 6,884 | 32339 | | 304.0 | 102.9 | BO BONNEVILLE | | | |
| | | 5,027 | 32349 | | 314.7 | 113.7 | PIPER | | | |
| | | 4,345 | 32356 | | 323.2 | 121.7 | DORNICK | | | |
| | | 2,687 | 32366 | 331.7 | 130.4 | MINNESOTA | | | | |
| | Y | 4,750 | 32370 | 336.0 | 134.8 | RS THERMOPOLIS | | | | |
| | | 3,290 | 32377 | 343.1 | 141.9 | LUCERNE | | | | |
| | T | 3,622 | 32382 | 348.0 | 146.8 | KIRBY | | | | |
| | | 2,117 | 32388 | 353.6 | 152.3 | CHATHAM | | | | |
| | | 3,650 | 32394 | 359.9 | 158.6 | PULLIAM | | | | |
| | Y | 3,516 | 32403 | 368.4 | 167.1 | U WORLAND | | | | |
| | | 1,062 | 32411 | 376.7 | 174.9 | DURKEE | | | | |
| | | 2,550 | 32415 | 381.0 | 179.8 | RAIRDEN | | | | |
| | | 3,464 | 32422 | 387.2 | 186.0 | MANDERSON | | | | |
| | | 3,078 | 32431 | 396.2 | 194.9 | BA BASIN | | | | |
| | BKRTY | 2,534 | 32438 | 403.9 | 202.7 | B GREYBULL | | | | |
| | | 4,192 | 32450 | 415.3 | 214.2 | SPENCE | | | | |
| | | 3,696 | 32456 | 422.0 | 220.8 | HINES | | | | |
| | | 3,654 | 32466 | 431.7 | 230.6 | KANE | | | | |
| | Y | 4,894 | 32476 | 441.7 | 240.5 | VO LOVELL | | | | |
| | | 4,440 | 32481 | 447.2 | 245.9 | COWLEY | | | | |
| | | 4,075 | 32487 | 452.9 | 251.7 | DEAVER | | | | |
| | JRTY | 4,780 | 32493 | 458.9 | 258.0 | FN FRANNIE | | | | |
| | | 2,033 | 32500 | 465.2 | 264.1 | WARREN | | | | |
| | | 5,613 | 32511 | 476.1 | 274.9 | WADE | | | | |
| | | 2,323 | 32521 | 486.8 | 285.6 | EAST BRIDGER | | | | |
| | R | 5,000 | 32528 | 493.7 | 292.5 | FROMBERG | | | | |
| | | 3,152 | 32534 | 499.6 | 298.4 | EDGAR | | | | |
| | JR | 2,561 | 32541 | 506.1 | 304.9 | SLESIA | | | | |
| | | 4,345 | 32546 | 511.2 | 310.0 | MASON | | | | |
| | JY | | 30855 | 515.6 | 314.4 | LAUREL | | | | |

ROCKY MOUNTAIN DIVN — 8th Subdivn

| RULE 6(A) Signs | Length of Sidings in Feet | Station Numbers | Line Segment | Mile Post Location | Distance From Front | BRANCH LINE | |
|-----------------|---------------------------|-----------------|--------------|--------------------|---------------------|-------------|-----------------|
| | | | | | | STATIONS | Office Calls |
| JRTY | 4,780 | 32493 | 330 | 0.8 | 0.0 | FN | FRANNIE |
| | 1,035 | 86509 | | 9.6 | 9.6 | | 9.6 MANTUA |
| | 1,668 | 86514 | | 14.5 | 14.5 | | 4.9 GARLAND |
| | 1,742 | 86519 | | 19.5 | 19.5 | K | 6.0 POWELL |
| | 1,911 | 86525 | | 25.5 | 25.5 | | 6.0 RALSTON |
| | 2,476 | 86530 | | 31.0 | 30.7 | | 5.2 VOCATION |
| | 517 | 86536 | | 36.8 | 36.5 | | 6.8 TROTTER |
| BKRT-Y | | 86542 | | 42.7 | 42.4 | CY | 6.9 CODY |

ROCKY MOUNTAIN DIVN — 9th Subdivn

| RULE 6(A) Signs | Length of Sidings in Feet | Station Numbers | Line Segment | Mile Post Location | Distance From Red Lodge | BRANCH LINE | |
|-----------------|---------------------------|-----------------|--------------|--------------------|-------------------------|-------------|----------------|
| | | | | | | STATIONS | Office Calls |
| T | 612 | 86334 | 328 | 44.2 | 0.0 | RG | RED LODGE |
| | 795 | 86328 | | 38.0 | 6.1 | | 6.1 FOX |
| | 2,591 | 86321 | | 31.6 | 12.3 | | 6.2 ROBERTS |
| | 772 | 86313 | | 23.0 | 20.9 | | 8.6 BOYD |
| | 2,136 | 86308 | | 18.0 | 26.0 | | 5.1 JOLIET |
| JRY | 1,968 | 32541 | | 9.6 | 34.5 | | 8.5 SILESIA |

ROCKY MOUNTAIN DIVN — 10th Subdivn

| RULE 6(A) Signs | Length of Sidings in Feet | Station Numbers | Line Segment | Mile Post Location | Distance From Mission | BRANCH LINE | |
|-----------------|---------------------------|-----------------|--------------|--------------------|-----------------------|-------------|-------------------|
| | | | | | | STATIONS | Office Calls |
| JT | | 30950 | 331 | 0.0 | 0.0 | | MISSION |
| | 910 | 86608 | | 8.5 | 8.5 | | 8.5 CHADBORN |
| | 1,608 | 86614 | | 14.7 | 14.7 | | 6.2 CLYDE PARK |
| T | 1,976 | 86623 | | 23.0 | 23.0 | | 8.3 WILLSALL |

ROCKY MOUNTAIN DIVN — 11th Subdivn

| RULE 6(A) Signs | Length of Sidings in Feet | Station Numbers | Line Segment | Mile Post Location | Distance From Livingston | BRANCH LINE | |
|-----------------|---------------------------|-----------------|--------------|--------------------|--------------------------|-------------|-----------------|
| | | | | | | STATIONS | Office Calls |
| BJK RTY | | 30956 | 332 | 0.1 | 0.0 | VS | LIVINGSTON |
| | 1,103 | 86710 | | 10.6 | 10.5 | | 10.5 BRISBIN |

ROCKY MOUNTAIN DIVN — 12th Subdivn

| RULE 6(A) Signs | Length of Sidings in Feet | Station Numbers | Line Segment | Mile Post Location | Distance From Manhattan | BRANCH LINE | |
|-----------------|---------------------------|-----------------|--------------|--------------------|-------------------------|-------------|------------------|
| | | | | | | STATIONS | Office Calls |
| JT | 3,653 | 31000 | 337 | 0.0 | 0.0 | MN | MANHATTAN |
| | | 86805 | | 4.8 | 4.5 | | 4.5 BUELL |
| | 1,595 | 86807 | | 7.0 | 6.7 | | 2.2 AMSTERDAM |
| | 798 | 86815 | | 15.4 | 15.2 | | 8.5 ANCENEY |

BN Radio Channel No. 1 in service on these Subdivisions.
BN Radio Channel No. 2 also in service on 11th Subdivision.

ROCKY MOUNTAIN DIVN — 13th Subdivn 13

| RULE 6(A) Signs | Length of Sidings in Feet | Station Numbers | Line Segment | Mile Post Location | Distance From Sappington | BRANCH LINE | |
|-----------------|---------------------------|-----------------|--------------|--------------------|--------------------------|-------------|-----------------|
| | | | | | | STATIONS | Office Calls |
| JT | 3,562 | 86919 | 338 | 0.0 | 0.0 | | SAPPINGTON |
| | | 87110 | | 10.1 | 9.5 | HS | 9.6 HARRISON |

ROCKY MOUNTAIN DIVN — 14th Subdivn

| RULE 6(A) Signs | Length of Sidings in Feet | Station Numbers | Line Segment | Mile Post Location | Distance From Whitehall | BRANCH LINE | |
|-----------------|---------------------------|-----------------|--------------|--------------------|-------------------------|-------------|----------------------|
| | | | | | | STATIONS | Office Calls |
| JT | 6,001 | 86938 | 339 | 0.0 | 0.0 | WH | WHITEHALL |
| | | 87212 | | 11.3 | 11.5 | | 11.5 WATERLOO |
| | | 87216 | | 15.7 | 15.7 | | 4.2 SILVER STAR |
| | 1,131 | 87226 | | 26.1 | 26.1 | TB | 10.4 TWIN BRIDGES |
| | 1,442 | 87235 | | 35.3 | 35.3 | SD | 9.2 SHERIDAN |
| T | 861 | 87245 | | 45.6 | 45.6 | AD | 10.3 ALDER |

ROCKY MOUNTAIN DIVN — 15th Subdivn

| RULE 6(A) Signs | Length of Sidings in Feet | Station Numbers | Line Segment | Mile Post Location | Distance From Great Falls | BRANCH LINE | |
|-----------------|---------------------------|-----------------|--------------|--------------------|---------------------------|-------------|---------------------|
| | | | | | | STATIONS | Office Calls |
| BJK RTY | | 32777 | 336 | 115.6 | 0.0 | PD | GREAT FALLS |
| | 2,213 | 11133 | | 129.8 | 14.2 | | 14.2 ULM |
| | 2,271 | 11148 | | 144.3 | 28.7 | | 14.5 CASCADE |
| | 1,854 | 11156 | | 152.5 | 36.9 | | 8.2 HARDY |
| | 2,208 | 11164 | | 160.1 | 44.5 | | 7.6 MID CANON |
| | 6,100 | 11171 | | 167.2 | 51.6 | | 7.1 CRAIG |
| | 2,488 | 11179 | | 175.1 | 59.7 | | 8.1 WOLF CREEK |
| | 2,276 | 11188 | | 184.4 | 68.8 | | 9.1 SIEBEN |
| | 5,112 | 11200 | | 196.9 | 81.3 | | 12.5 SILVER CITY |
| | | | | 211.0 | | | |
| BJK RTY | 2,160 | 31079 | 42 | 2.7 | 98.1 | | 16.8 HELENA |
| | | | | 0.0 | | HY | |
| | | | 41 | 238.4 | | | |
| | | | | 234.8 | | | |
| J | 3,452 | 31075 | 336 | 218.1 | 102.5 | JN | EAST HELENA |
| | 1,331 | 11232 | | 228.1 | 112.4 | | 9.9 CLANCY |
| | 2,625 | 11246 | | 242.0 | 126.3 | | 13.9 AMAZON |
| | 2,298 | 11259 | | 257.0 | 140.3 | | 14.0 BASIN |

BETWEEN HELENA AND EAST HELENA TRAINS OPERATE ON 2ND SUBDIVN.

ROCKY MOUNTAIN DIVN — 16th Subdivn

| RULE 6(A) Signs | Length of Sidings in Feet | Station Numbers | Line Segment | Mile Post Location | Distance From Drummond | BRANCH LINE | |
|-----------------|---------------------------|-----------------|--------------|--------------------|------------------------|-------------|---------------------|
| | | | | | | STATIONS | Office Calls |
| AJT | 10,638 | 31150 | 340 | 0.0 | 0.0 | D | DRUMMOND |
| | 835 | 87406 | | 6.1 | 6.1 | | 6.1 HALL |
| | | 87410 | | 10.3 | 10.4 | | 4.3 ELEPHANT |
| | 450 | 87415 | | 15.2 | 15.2 | | 4.8 MAXVILLE |
| T | | 87426 | | 26.0 | 26.0 | | 10.8 PHILIPSBURG |

14 ROCKY MOUNTAIN DIVN — 17th Subdivn

ROCKY MOUNTAIN DIVN — 18th Subdivn

| RULE (A) Signs | Length of Sidings in Feet | Station Numbers | Line Segment | Mile Post Location | Distance From Mile-socket | BRANCH LINE STATIONS | |
|----------------|---------------------------|-----------------|--------------|--------------------|---------------------------|----------------------|--------------|
| | | | | | | Office Calls | |
| BJKR TKY | | 31190 | 333 | 0.0 | 0.0 | MA | MISSOULA |
| | | | | 11.5 | | | |
| | 502 | 87511 | | 11.0 | 11.5 | | LOLO |
| | | | | 18.1 | | | 18.1 |
| | | 87530 | | 29.2 | 29.6 | | STEVENSVILLE |
| | | | | 6.4 | | | 6.4 |
| | 1,423 | 87536 | | 35.6 | 36.0 | | VICTOR |
| | | | | 7.9 | | | 7.9 |
| | 666 | 87544 | | 43.5 | 43.9 | | CORVALLIS |
| | | | | 4.6 | | | 4.6 |
| T | 388 | 87549 | 47.4 | 48.5 | EA | HAMILTON | |
| | | | 2.9 | | | 2.9 | |
| | | 87552 | 50.2 | 51.4 | | GRANTSDALE | |
| | | | 14.5 | | | 14.5 | |
| T | 2,530 | 87568 | 64.7 | 65.9 | DA | DARBY | |

| RULE (A) Signs | Length of Sidings in Feet | Station Numbers | Line Segment | Mile Post Location | Distance From Dixon | BRANCH LINE STATIONS | |
|----------------|---------------------------|-----------------|--------------|--------------------|---------------------|----------------------|--------|
| | | | | | | Office Calls | |
| JT | 4,489 | 31243 | 334 | 0.5 | 0.0 | | DIXON |
| | | | | | | 5.0 | |
| | 1,030 | 87806 | | 5.0 | 5.0 | | MOISE |
| | | | | 3.7 | | | 3.7 |
| | | 87809 | | 8.7 | 8.7 | | D'ASTE |
| | | | | 4.3 | | | 4.3 |
| | 2,382 | 87813 | | 13.0 | 13.0 | | CHARLO |
| | | | | 6.9 | | | 6.9 |
| | 1,875 | 87820 | | 19.9 | 19.9 | RN | ROMAN |
| | | | | 8.1 | | | 8.1 |
| | 1,495 | 87825 | 25.0 | 25.0 | | PABLO | |
| | | | 0.7 | | | 0.7 | |
| | | 87826 | 25.6 | 25.7 | | DUNHAM | |
| | | | 25.7 | | | 25.7 | |
| T | | 87833 | 33.4 | 33.4 | S | POLSON | |

BN Radio Channel No. 1 and No. 2 in service on this Subdivision.

BN Radio Channel No. 1 in service on this Subdivision.

ROCKY MOUNTAIN DIVISION INDUSTRIAL TRACKS AND OTHER TRACKS NOT SHOWN AS STATIONS IN TIME TABLE

| NAME | LOCATION | Capacity in Cars | Switch Opens | NAME | LOCATION | Capacity in Cars | Switch Opens |
|--|--------------------------------|------------------|--------------|----------------------------------|--------------------------------|------------------|--------------|
| First Subdivision | | | | Fifth Subdivision (cont.) | | | |
| 3880 Columbus—Non Controlled Siding, South Side | | 118 | Both | 87637 Fish Creek | 4.2 miles west of Cyr | 34 | East |
| 30921 Big Timber—Non Controlled Siding, North Side | | 99 | Both | 87853 Cedars | 4.5 miles west of Westfall | 35 | West |
| 30636 Springdale | 5.0 miles west of Carney | 28 | West | 87672 Royal Logging | 1.5 miles west of St. Regis | 36 | East |
| 30863 Downer | 2.1 miles west of Mission | 16 | East | Sixth Subdivision | | | |
| 30953 Burkland Lbr. Co. Spur | 2.7 miles west of Mission | 3 | East | 32269 Sodium | 5.5 miles west of Petrie | 17 | East |
| Second Subdivision | | | | 32440 Magnet Cove | 2.2 miles west of Greybull | 112 | Both |
| 31024 Stanley | 4.3 miles west of Clarkston | 6 | East | 32446 Stucco | 7.7 miles west of Greybull | 50 | Both |
| 31072 Penwell | 3.7 miles west of Louisville | 8 | West | 32473 Quality | 7.0 miles west of Kane | 24 | Both |
| 31063 Fort Harrison | 4.3 miles west of Helena | 4 | East | 32479 Sage Creek Spur | 2.4 miles west of Lovell | 9 | East |
| 31136 Gold Creek | 3.9 miles west of Phosphate | 20 | East | 86419 Bridger | 7.0 miles from Fromberg | 76 | Both |
| 87300 Phosphate Lower Dock | 0.3 miles from Phosphate | 48 | Both | 32400 Goides | 5.3 miles west of Pulliam | 17 | West |
| 87305 M. P. 4 | 4.7 miles from Phosphate | 39 | East | 32405 Coors | 2.5 miles west of Worland | 28 | Both |
| 31155 Bradman | 4.6 miles west of Drummond | 18 | West | 32412 Eccles | 13.9 miles west of Worland | 30 | West |
| 31174 Bonita | 6.7 miles west of Nimrod | 20 | East | Eighth Subdivision | | | |
| 31186 McQuarrie | 3.7 miles west of Clinton | 150 | Both | 85722 O'Donnell | 2.5 miles west of Powell | 17 | Both |
| Third Subdivision | | | | Fifteenth Subdivision | | | |
| 31282 Westville | 7.1 miles west of Plains | 118 | Both | 11165 Mortenson's Spur | 1.1 miles east of Hardy | 143 | West |
| 31295 Thompson River | 5.8 miles west of Eddy | 18 | West | 11180 Wolf Creek Quarry | 1.1 miles west of Wolf Creek | 18 | Both |
| 31296 Woodlin Pit | 7.2 miles west of Eddy | 68 | West | 11225 Montana City | 8.1 miles west of Helena | 117 | Both |
| 31297 Woodlin | 7.5 miles west of Eddy | 66 | Both | 11262 Boulder | 6.0 miles west of Amazon | 50 | Both |
| 31297 Hartman | 2.0 miles west of Woodlin | 34 | West | 11267 Pacific Silica | 1.4 miles east of Basin | 25 | Both |
| 31300 Brownman | 2.3 miles west of Woodlin | 30 | West | Sixteenth Subdivision | | | |
| 31632 Clark Fork | 2.6 miles west of Colby | 47 | Both | 87455 Elephant Mill Site | 5.0 miles from Elephant | 105 | Both |
| Fourth Subdivision | | | | Seventeenth Subdivision | | | |
| 89955 Welch | 4.3 miles west of Spire Rock | 18 | West | 87526 Base | 3.5 miles east of Stevensville | 6 | East |
| 89965 Skones | 4.7 miles west of Homestake | 18 | East | 87558 Charles Heights | 5.8 miles west of Grantsdale | 14 | Both |
| 89976 Rocker | 4.3 miles west of Butte | 14 | East | Eighteenth Subdivision | | | |
| 87003 Galen | 3.3 miles west of Warm Springs | 20 | West | 87831 Dupuis | 2.1 miles east of Polson | 16 | East |
| Fifth Subdivision | | | | 87830 Ready Mix Spur | 3 miles east of Polson | 1 | East |
| 87605 Hoerner - Waldorf | 1.0 miles from Schilling | Lead | West | | | | |
| 87619 Nine Mile | 9.1 miles west of Frenchtown | 10 | East | | | | |
| 87629 Plateau | 4.6 miles west of Lothrop | 80 | Both | | | | |

ROCKY MOUNTAIN DIVISION LINE SEGMENT NUMBERS

YARD LINE SEGMENTS

| Line Segment | Yard |
|--------------|-----------------------|
| 469 | Missoula Hump |
| 710 | Livingston |
| 711 | Livingston Shop |
| 712 | East Helena |
| 713 | Helena |
| 714 | Butte |
| 715 | Bonner Industry Track |
| 716 | Missoula |
| 717 | Greybull |
| 718 | Paradise Tie Plant |
| 724 | Deer Lodge |
| 728 | Bonner |

OTHER ROAD LINE SEGMENTS

| Line Segment | Limits | Mileposts |
|--------------|------------------------|--------------|
| 329 | Fromberg—Bridger | 12.2 to 19.5 |
| 341 | Sherry Spur | |
| 342 | Phosphate Spur | |

BALLAST PITS

| Line Segment | Yard |
|--------------|------------|
| 719 | McQuarry |
| 720 | Warren |
| 721 | Hardy |
| 722 | Wolf Creek |

FREIGHT TRAIN SCHEDULES

(For Information Only)

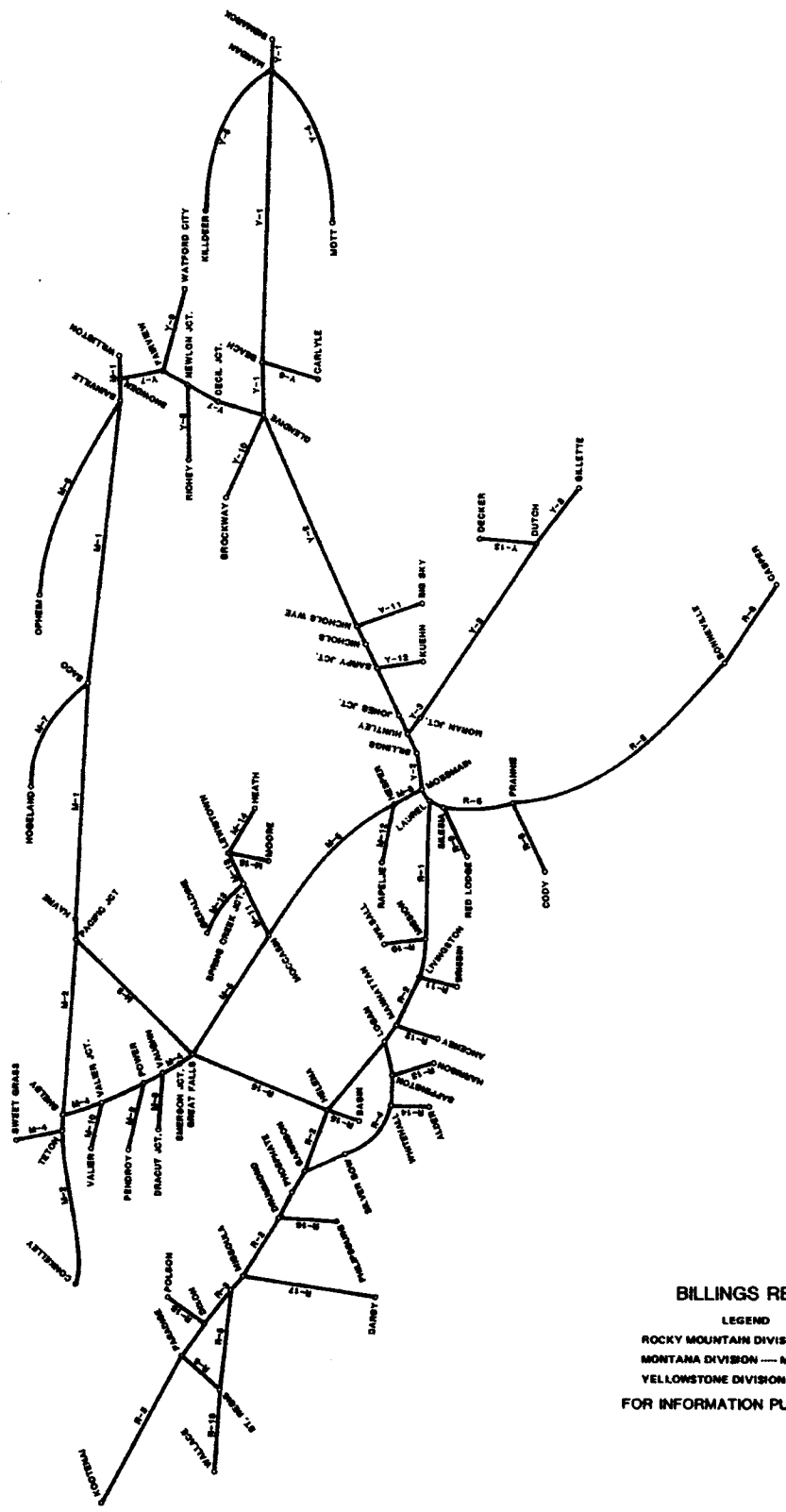
| WESTWARD | | | | | | | | |
|------------|-----------|------------|---------|---------|---------|------------|---------|-----------|
| Train No. | LAUREL | LIVINGSTON | | HELENA | | MISSOULA | | SANDPOINT |
| | Leave | Arrive | Leave | Arrive | Leave | Arrive | Leave | Arrive |
| HSP | 9:15PM | 11:45PM | 12:15AM | 3:55AM | 4:00AM | 7:15AM | 8:15AM | 12:45PM |
| DPS | 12:01AM | 2:35AM | 3:05AM | 6:45AM | 6:50AM | 10:05AM | 11:35AM | 4:05PM |
| 175 | 11:30PM | 2:30AM | 3:00AM | 7:30AM | 8:00AM | 1:30PM | 6:00PM | 11:50PM |
| EASTWARD | | | | | | | | |
| Train No. | SANDPOINT | MISSOULA | | HELENA | | LIVINGSTON | | LAUREL |
| | Leave | Arrive | Leave | Arrive | Leave | Arrive | Leave | Arrive |
| PSH | 4:15PM | 11:10PM | 12:10AM | 3:55AM | 4:00AM | 8:10AM | 8:40AM | 11:15AM |
| SPD | 12:25PM | 7:20PM | 8:20PM | 12:05AM | 12:10AM | 4:20AM | 4:50AM | 7:25AM |
| 86 | | | 11:30PM | 3:00AM | 3:45AM | 8:00AM | 8:50AM | 11:35AM |

CHIEF MEDICAL OFFICERS

Dr. Abbott Skinner, Chief Medical Officer St. Paul, Mn.

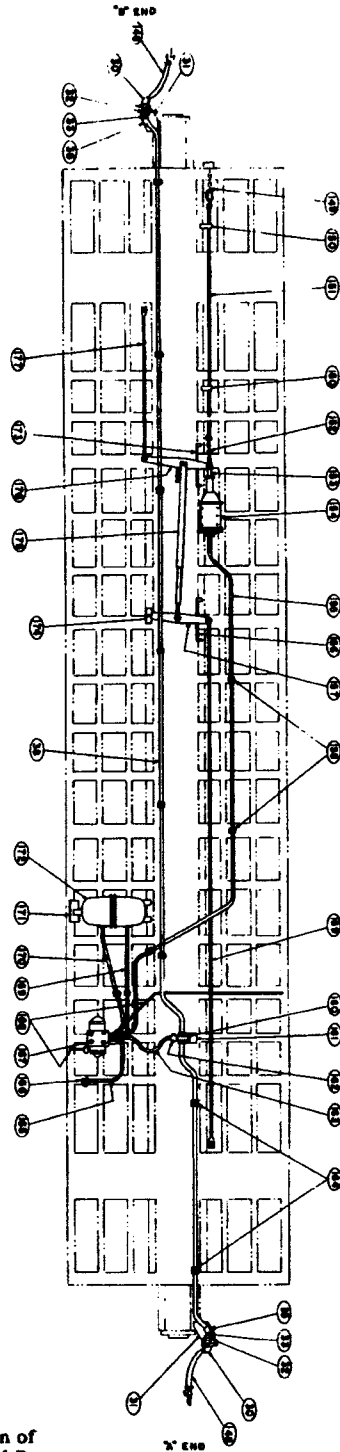
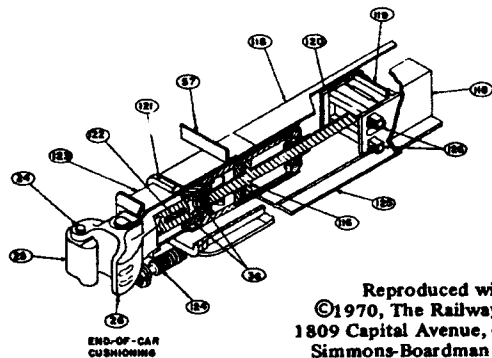
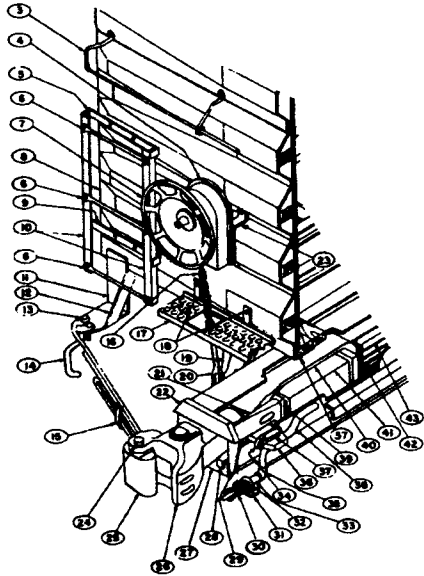
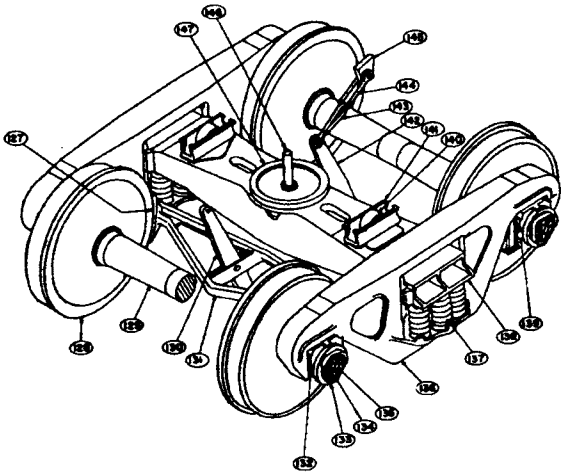
MEDICAL EXAMINERS AND LOCAL SURGEONS

| | | | |
|------------------------------------|----------------|----------------------------------|----------------|
| Dr. Eugene V. Kronmiller | Billings | Dr. D. S. MacKenzie, Jr. | Havre |
| Dr. J. H. Schaeffer | Billings | Dr. Stuart A. Reynolds | Havre |
| Dr. R. J. Dunnigan | Bismarck | Dr. John W. Richardson | Havre |
| Dr. R. L. Jennings | Bismarck | Dr. John R. Burgess | Helena |
| Dr. D. C. Epler | Bozeman | Dr. D. W. Bosler | Helena |
| Dr. R. J. Best | Butte | Dr. A. R. Little | Helena |
| Dr. George M. Gilboy | Butte | Dr. M. W. Calvert | Laurel |
| Dr. J. E. McGreevey | Butte | Dr. J. G. Allison | Livingston |
| Dr. J. L. Patterson, Jr. | Butte | Dr. L. M. Baskett | Livingston |
| Dr. Richard S. Buker, Jr. | Chester | Dr. W. E. Harris | Livingston |
| Dr. Robert H. Leeds | Chinook | Dr. R. E. Walker | Livingston |
| Dr. R. D. Buchanan | Columbia Falls | Dr. G. J. Moffit | Livingston |
| Dr. Douglas J. Pitman | Columbia Falls | Dr. D. A. Carlsen | Mandan |
| Dr. J. W. Finley | Conrad | Dr. P. M. Ocampo | Mandan |
| Dr. Robert S. Hamilton | Conrad | Dr. E. L. King | Manhattan |
| Dr. James R. Markette | Cut Bank | Dr. M. D. Winter, Jr. | Miles City |
| Dr. L. M. Benjamin | Deer Lodge | Dr. J. E. Gouaux | Missoula |
| Dr. Francis L. Bertoglio | Deer Lodge | Dr. C. P. Brooke | Missoula |
| Dr. Hans E. Guloién | Dickinson | Dr. J. A. Evert | Missoula |
| Dr. A. C. Sawchuk | Dickinson | Dr. W. F. Morrison | Missoula |
| Dr. James Cope | Forayth | Dr. C. R. Herbrandson | New Castle |
| Dr. J. E. Hoadley | Gillette | Dr. Jack Lulack | Plains |
| Dr. Paul E. Kauffman | Gillette | Dr. E. D. Coriell | Polson |
| Dr. David Gregory | Glasgow | Dr. F. Deiss | Powell |
| Dr. Leonard Klaseen | Glasgow | Dr. P. M. Rusager | Richardton |
| Dr. T. J. Malee | Glendive | Dr. S. T. McDonald | Ronan |
| Dr. S. A. Olson | Glendive | Dr. R. J. Stanchfield | Shelby |
| Dr. John Margaris | Great Falls | Dr. J. J. Batty | Sheridan |
| Dr. John Ross | Great Falls | Dr. J. R. Rhodes | Sheridan |
| Dr. Robert Skinner | Great Falls | Dr. W. M. Swager | Sheridan |
| Dr. J. C. Wolgamot | Great Falls | Dr. R. D. Harper | Sidney |
| Dr. L. L. Howard | Great Falls | Dr. C. E. Roadahl | Thompson Falls |
| Dr. W. A. Robinson | Greybull | Dr. V. L. Swenson | Townsend |
| Dr. A. S. Rogers | Greybull | Dr. R. B. Beithon | Twin Bridges |
| Dr. Donald MacLean | Hamilton | Dr. R. J. Hill | Whitehall |
| Dr. D. J. Almas | Havre | Dr. Gayle Sacry | Whitehall |
| Dr. James E. Elliott | Havre | Dr. J. D. Graven | Williston |
| Dr. James N. Kelley | Havre | Dr. Edward J. Hagan | Williston |



BILLINGS REGION
 LEGEND
 ROCKY MOUNTAIN DIVISION — R-1
 MONTANA DIVISION — M-1
 YELLOWSTONE DIVISION — Y-1
 FOR INFORMATION PURPOSES ONLY
 MAY 1990

CAR CHART



3. Horizontal end handhold
4. Hand brake housing
5. End ladder support—top
6. End ladder tread
7. Hand brake wheel
8. Steel end—bottom
9. End ladder support—bottom
11. Uncoupling lever bracket
12. Uncoupling lever bracket support
13. Uncoupling lever support
14. Telescoping uncoupling rod
15. Uncoupling lever guide
16. Hand brake chain
17. End platform (combined crossover and brake step)
18. End platform support
19. Bell crank
20. Vertical hand brake rod
21. Front draft gear stop
22. Striker
23. Hand brake housing support
24. Coupler knuckle pin
25. Coupler knuckle
26. Type E coupler head
27. Coupler carrier
28. Coupler wear plate
29. Striker flange
30. Angle cock
31. Angle cock support
32. Angle cock "U" bolt
33. Nipple
34. Draft key washer
35. 45° elbow
36. Draft key
37. Draft key retainer
38. Brake pipe, 1 1/4" (Train line)
39. Follower block
40. Coupler yoke
41. Draft gear
42. Rear draft gear stop
43. Rear draft gear stop reinforcement
116. Hydraulic piston
118. Center sill
119. Back stop plate
120. Rear lug casting
121. Striker casting
122. Coupler key
123. Cushioning unit
124. Restoring mechanism
125. Inspection plate
126. Rear cross key
127. Brake shoe
128. Wheel
129. Axle
130. Truck live lever
131. Brake beam
132. Roller bearing adapter
133. Roller bearing end cap
134. End cap retaining bolt
135. End cap locking plate
136. Truck side frame
137. Truck spring
138. Truck bolster
139. Roller bearing assembly
140. Truck side bearing roller
141. Truck side bearing housing
142. Truck dead lever
143. Clevis at dead lever
144. Clevis at dead lever fulcrum
145. Dead lever anchor—underframe mounted
146. Center pin
147. Truck center plate cast integral with truck bolster
148. Air hose
149. Hand brake chain at bell crank
150. Tand brake rod guide
151. Hand brake rod
152. Hand brake chain at cylinder
153. Cylinder push rod
154. Air brake cylinder
155. Cylinder pipe, 3/4"
156. Floating lever guide
157. Floating lever
158. Pipe clamp, 3/4"
159. Top rod, "A" end
160. Branch pipe tee
161. Branch pipe tee support
162. Combined dirt collector and cut-out cock
163. Connection hose
164. Pipe clamp, 1 1/2"
165. Retainer pipe
166. Retainer valve
167. ABD control valve
168. Release rod
169. Auxiliary reservoir pipe, 3/4"
170. Emergency reservoir pipe, 3/4"
171. Reservoir support
172. Combined auxiliary and emergency reservoir
173. Cylinder lever guide
174. Brake lever fulcrum
175. Brake slack adjuster
176. Cylinder lever
177. Top rod, "B" end

Reproduced with permission of
 ©1970, The Railway Educational Bureau
 1809 Capital Avenue, Omaha, Nebraska 68102
 Simmons-Boardman Publishing Corporation

POSITION IN FREIGHT TRAIN OF PLACARDED CARS

| PLACARD APPLIED ON CAR | | EXPLOSIVES - A | POISON GAS | LOADED PLACARDED TANK CARS (EXCEPT CARS PLACARDED POISON GAS OR COMBUSTIBLE) | EMPTY PLACARDED TANK CARS (EXCEPT COMBUSTIBLE) | RADIOACTIVE | COMBUSTIBLE | ALL OTHER PLACARDED CARS |
|--|--|---------------------|----------------|--|--|-------------|-------------|--------------------------|
| | | RESTRICTIONS | | | | | | |
| MUST NOT BE NEARER THAN THE SIXTH CAR FROM ENGINE OR CABOOSE. HOWEVER WHEN LENGTH OF TRAIN WILL NOT PERMIT CAR TO BE SO PLACED IT MUST BE PLACED NEAR MIDDLE OF TRAIN. | | X | X | X | | | | |
| PLACARDED CAR MUST NOT BE PLACED NEXT TO | ENGINE | X | X | X | X | X | | |
| | OCCUPIED CABOOSE | X ^① | X ^① | X | X | X | | |
| | LOADED FLAT CARS | X ^① | X | X ^② | | | | |
| | OPEN TOP CARS | X ^③ | X | X | | | | |
| | CARS WITH ANY OF THE FOLLOWING OPERATING: AN ENGINE LIGHTED HEATERS STOVES OR LAMPS AUTOMATIC REFRIG- ERATION UNITS | X | X | X | | | | |
| | OCCUPIED CAR | X ^① | X ^① | X | | | | |
| | EXPLOSIVES - A | | X | X | | X | X | |
| | POISON GAS | X | | X | | X | X | |
| | RADIOACTIVE | X | X | X | | | | X |
| | UNDEVELOPED FILM | | | | | X | | |
| EMPTY PLACARDED TANK CARS | | | | | | | | |
| ANY LOADED PLACARDED CAR (EXCEPT COMBUSTIBLE) | X | X | | | X | | | |

HOW TO USE THIS CHART

To determine the type of placard applied to car- follow vertical line down and note which lines apply by "X" shown in box

***** NOTE *****

Cars with same placards may be placed next to each other.

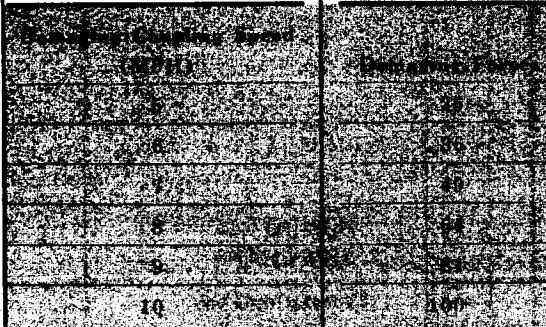
Footnotes:

① A flatcar equipped with permanently attached ends of rigid construction is considered to be an open-top car.
 ② A loaded flatcar, other than a specially equipped car in trailer-on-flat-car or container-on-flatcar service or a flatcar loaded with vehicles secured by means of a device designed for that purpose and permanently installed on the flatcar, and of a type generally accepted for handling in interchange be-

tween railroads. This exception for cars in trailer-on-flatcar service does not apply to loaded flatbed trucks, loaded flatbed trailers, loaded open-top trailers, or loaded trucks or trailers without securely closed doors.
 ③ An open-top car when any of the lading protrudes beyond the car ends or when any of the lading extending above the car ends is beyond the car ends.

④ A rail car placarded "EXPLOSIVES A" or "POISON GAS" in a moving or standing train must be next to and ahead of any car occupied by the guards or technical escorts accompanying this car. However, if a car occupied with a lighted heater or stove, it must be the fourth car behind any car requiring "EXPLOSIVE A" placards.

PERFORM SWITCHING IN A MANNER WHICH WILL AVOID DAMAGE TO CONTENTS OF CARS AND EQUIPMENT

| Safe Coupling Speed (MPH) | Impact Force |
|---|--------------|
| 1 | 1 |
| 2 | 4 |
| 3 | 9 |
| 4 | 16 |
|  | |

SPEED TABLE

| Time Per Mile | | Miles Per Hour | Time Per Mile | | Miles Per Hour |
|---------------|---------|----------------|---------------|---------|----------------|
| Minutes | Seconds | | Minutes | Seconds | |
| 0 | 45 | 80.0 | 1 | 12 | 50.0 |
| 0 | 46 | 78.3 | 1 | 15 | 48.0 |
| 0 | 47 | 76.6 | 1 | 20 | 45.0 |
| 0 | 48 | 75.0 | 1 | 25 | 42.3 |
| 0 | 49 | 73.5 | 1 | 30 | 40.0 |
| 0 | 50 | 72.0 | 1 | 40 | 36.0 |
| 0 | 51 | 70.6 | 1 | 45 | 34.3 |
| 0 | 52 | 69.2 | 1 | 50 | 32.7 |
| 0 | 53 | 67.9 | 2 | | 30.0 |
| 0 | 54 | 66.6 | 2 | 10 | 27.6 |
| 0 | 55 | 65.4 | 2 | 15 | 26.6 |
| 0 | 56 | 64.2 | 2 | 20 | 25.7 |
| 0 | 57 | 63.1 | 2 | 30 | 24.0 |
| 0 | 58 | 62.0 | 2 | 40 | 22.5 |
| 0 | 59 | 61.0 | 2 | 45 | 21.8 |
| 1 | | 60.0 | 2 | 50 | 21.2 |
| 1 | 1 | 59.0 | 3 | | 20.0 |
| 1 | 2 | 58.0 | 3 | 9 | 19.0 |
| 1 | 3 | 57.1 | 3 | 20 | 18.0 |
| 1 | 4 | 56.2 | 3 | 31 | 17.0 |
| 1 | 5 | 55.3 | 3 | 45 | 16.0 |
| 1 | 6 | 54.5 | 4 | | 15.0 |
| 1 | 7 | 53.7 | 5 | | 12.0 |
| 1 | 8 | 52.9 | 6 | | 10.0 |
| 1 | 9 | 52.1 | 7 | 30 | 8.0 |
| 1 | 10 | 51.4 | 10 | | 6.0 |

**MAINTENANCE OF WAY
CONDITIONAL STOP**

(Form Y Train Order)

The following forms of oral authorization by the Foreman and acknowledgment of understanding by the engineer are to be used to permit trains to pass a red flag without stopping within the limits of a Form Y train order.

Foreman will state: "Burlington Northern Railway Foreman calling Extra 232 East about Order No. (Form Y Train Order No.)"

Engineer must respond, identifying his train as: "This is Burlington Northern engineer, Extra 232 East."

When engineer has answered as above, the foreman will state: "Extra 232 East may pass red signal at (Mile Post Location and specify Track involved) without stopping."

The foreman may also authorize a different speed from that shown in the Form Y train order by adding to his instructions: "Proceed at _____ MPH," or "Proceed at normal speed."

The engineer must repeat back to the foreman the instructions that are given him.